

MAP OF Stevens Subdivision

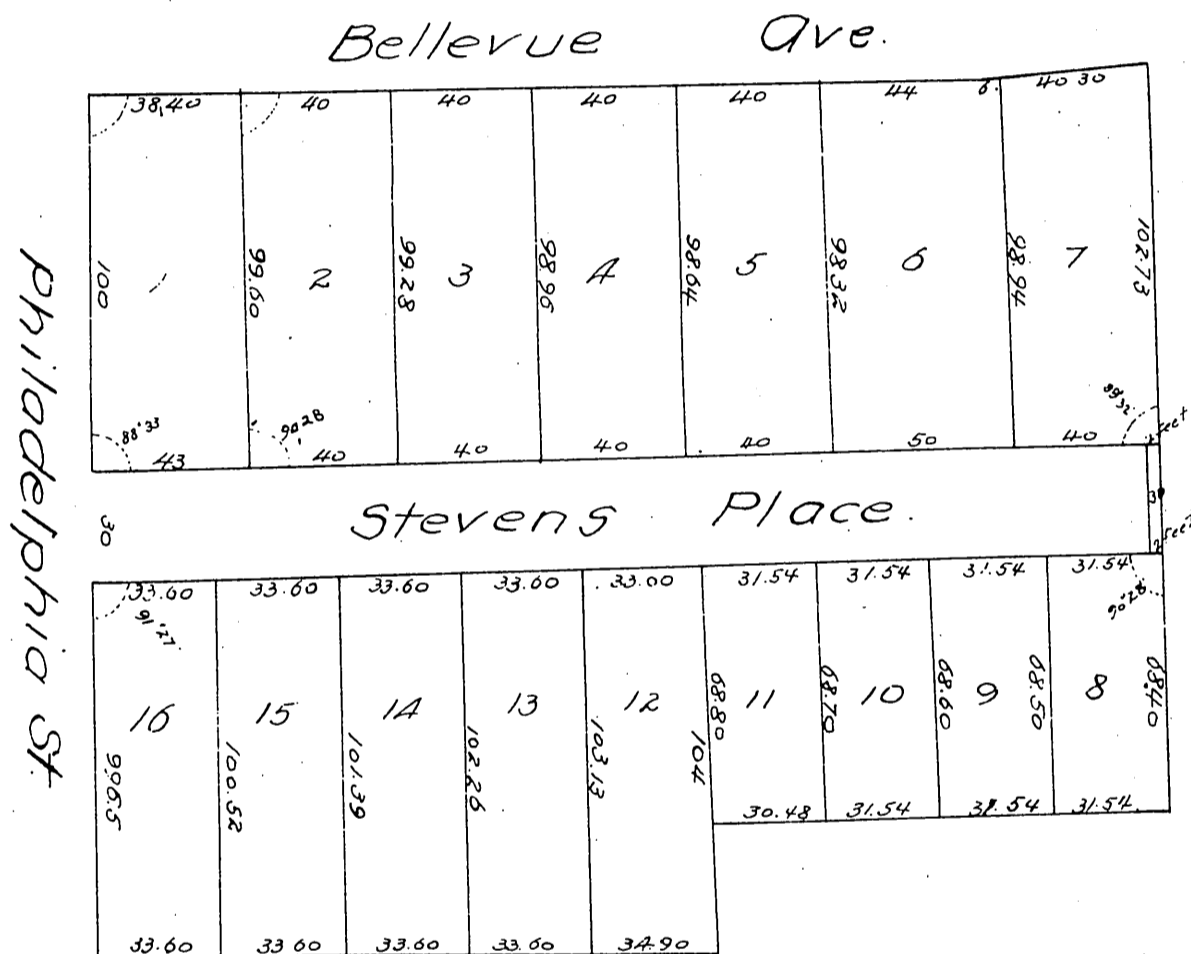
of Lots 17, 18, 19, 20, 21, 22 and 23 Block H.

Fort Hill Tract

Los Angeles, Cal.

Surveyed April 1887 L. Friel C.E.

Scale 50 ft = 1 in.



A full, true and correct copy of the original
recorded May 4 1887 at 32 min. past 11 A.M.
at request of H. R. Stevens.

Frank A. Gibson.
By George Bugbee.

County Recorder.
Deputy.