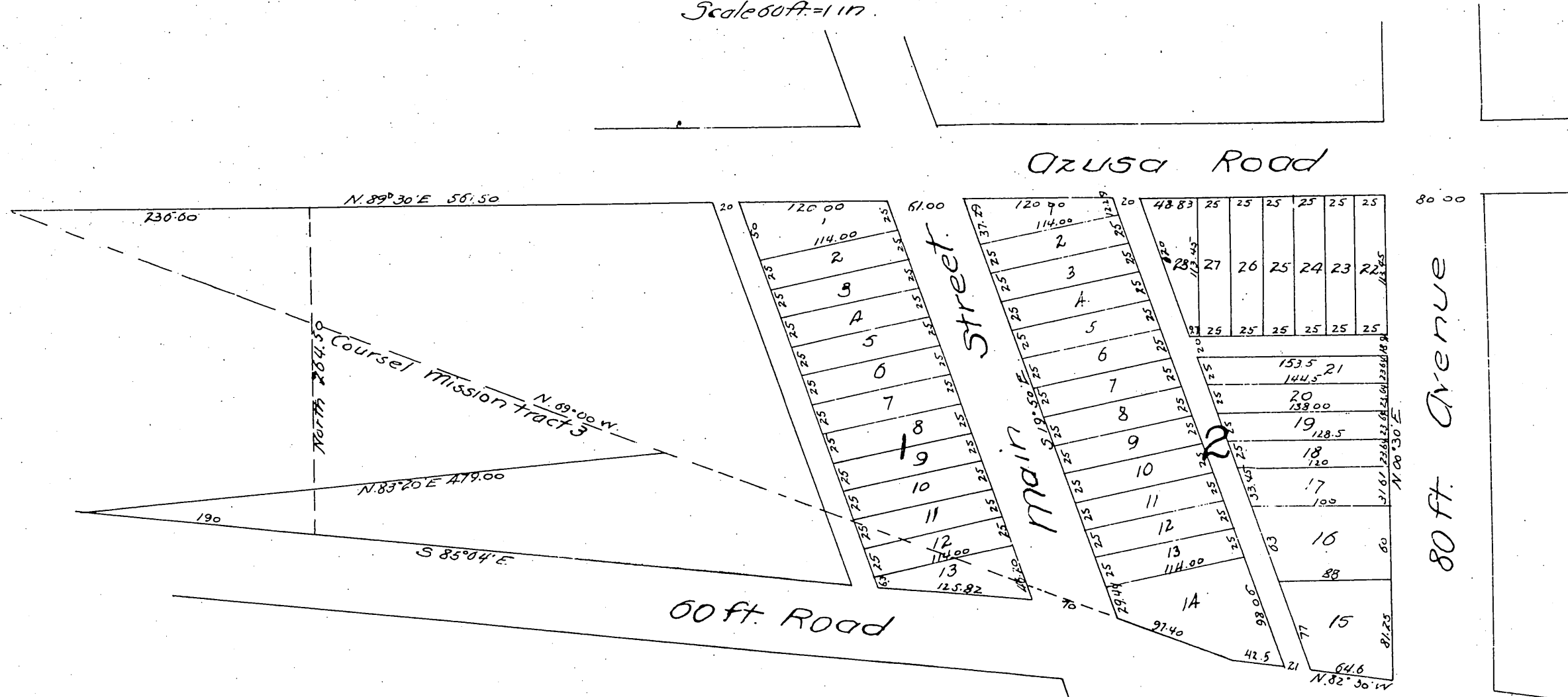


San Gabriel  
 Resurvey of  
 Mrs. A. V. Slosson's  
 First Subdivision of part of Mission Tract Three  
 April 29, 1887. L. H. Carver C.E. Los Angeles Cal.  
 Scale 60 ft. = 1 in.



A full, true and correct copy of the original  
 (reduced to the scale of 200 feet to one inch)  
 recorded May 5, 1887 at A. P. M. at request  
 of J. W. Swanwick.  
 Frank A. Gibson County Recorder.  
 By George Bugbee Deputy.

