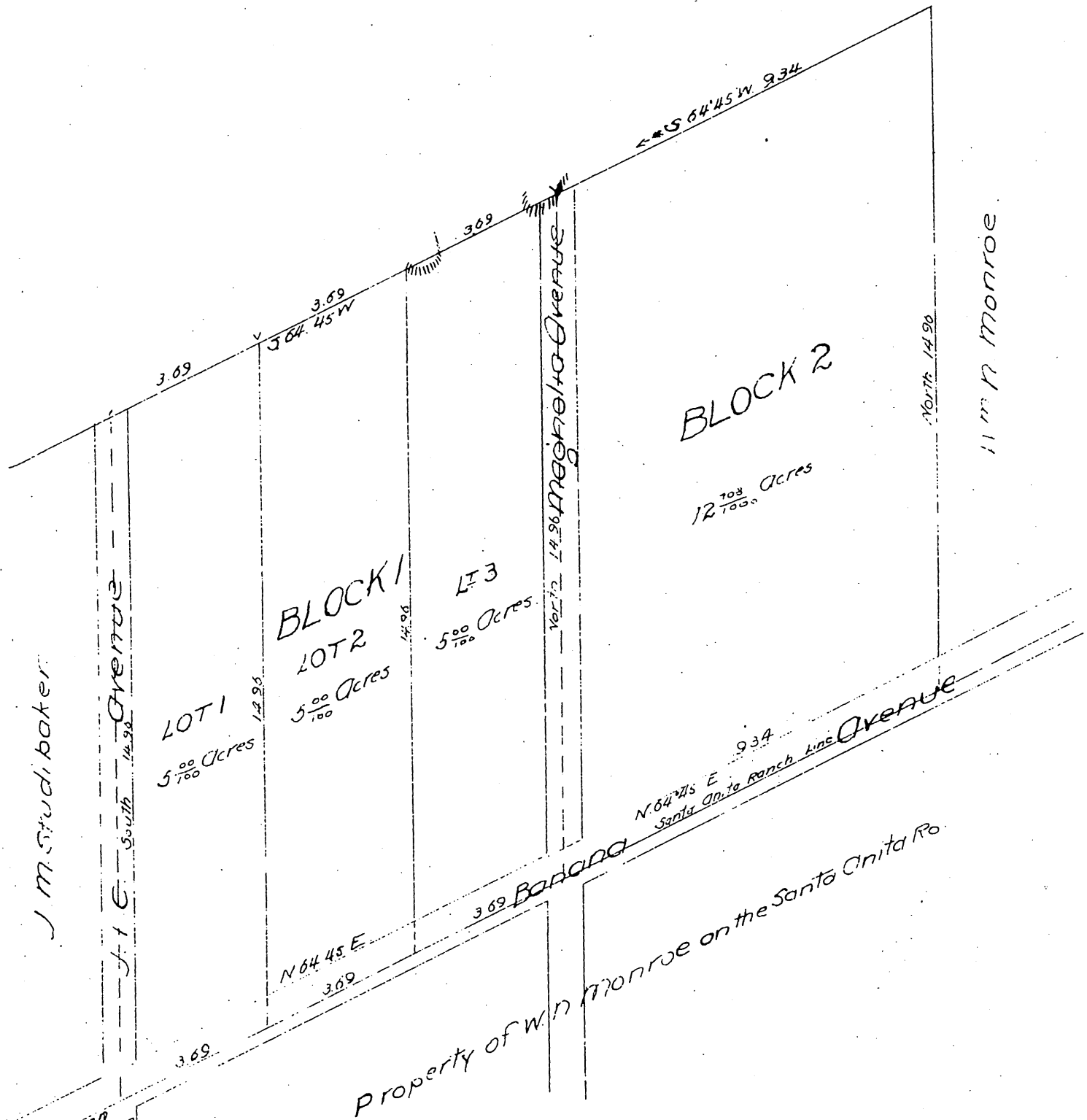


MAP  
 OF THE  
 John M. Thomas AND Wm. N. Monroe's  
 Addition to the Town of Monrovia  
 Situated in Section 23 T. 1 N. R. 11 W. S. B. M.  
 Surveyed in April 1887 by John Goldsworthy.  
 County Surveyor Los Angeles Co. Cal.  
 Scale 2 chs = 1 inch.



N 64° 45' E 24.70 ch to line between  
 Sects 22 & 23 and 29.06 chains from  
 Station 22 of Rancho Santa Anita

A full, true and correct copy of the original  
 (reduced to the scale of 3 chains to one inch)  
 recorded May 5, 1887 at 3 min. past 4 P.M.  
 at request of John M. Thomas.  
 Frank A. Gibson County Recorder  
 By George Bugbee Deputy.