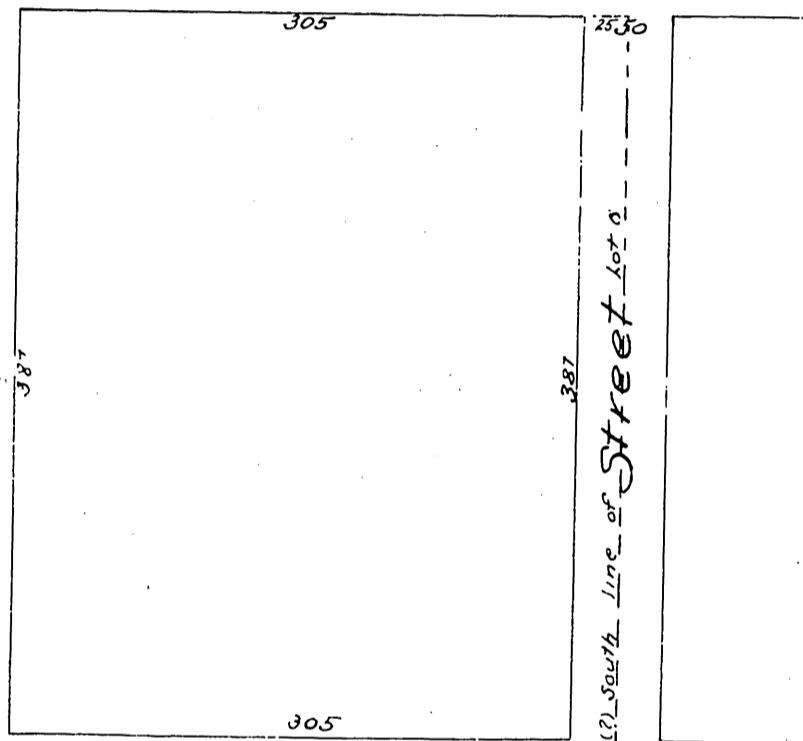
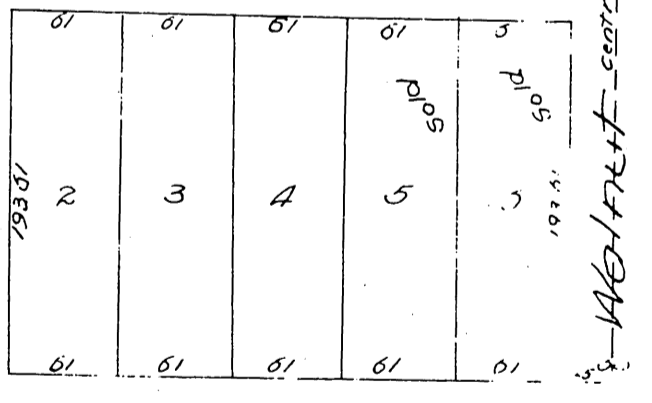


PLAT
of the
Subdivision
of the South half of Lot 5 Block "C"
San Pasqual Tract
of the lands of the L.V.L. & W. Assn Pasadena.
Los Angeles Co. Cal.
Surveyed by J.M. Willard C.E.
Scale 100 ft. = inch

R Los Robles Ave. 70



70 Euclid Ave. 70



A full true and correct copy of the original
recorded May 6, 1887 at 40 min p. m.
at request of R. M. Furlong
Frank A. Gibson County R. M. S.
By George Bugbee D. W.