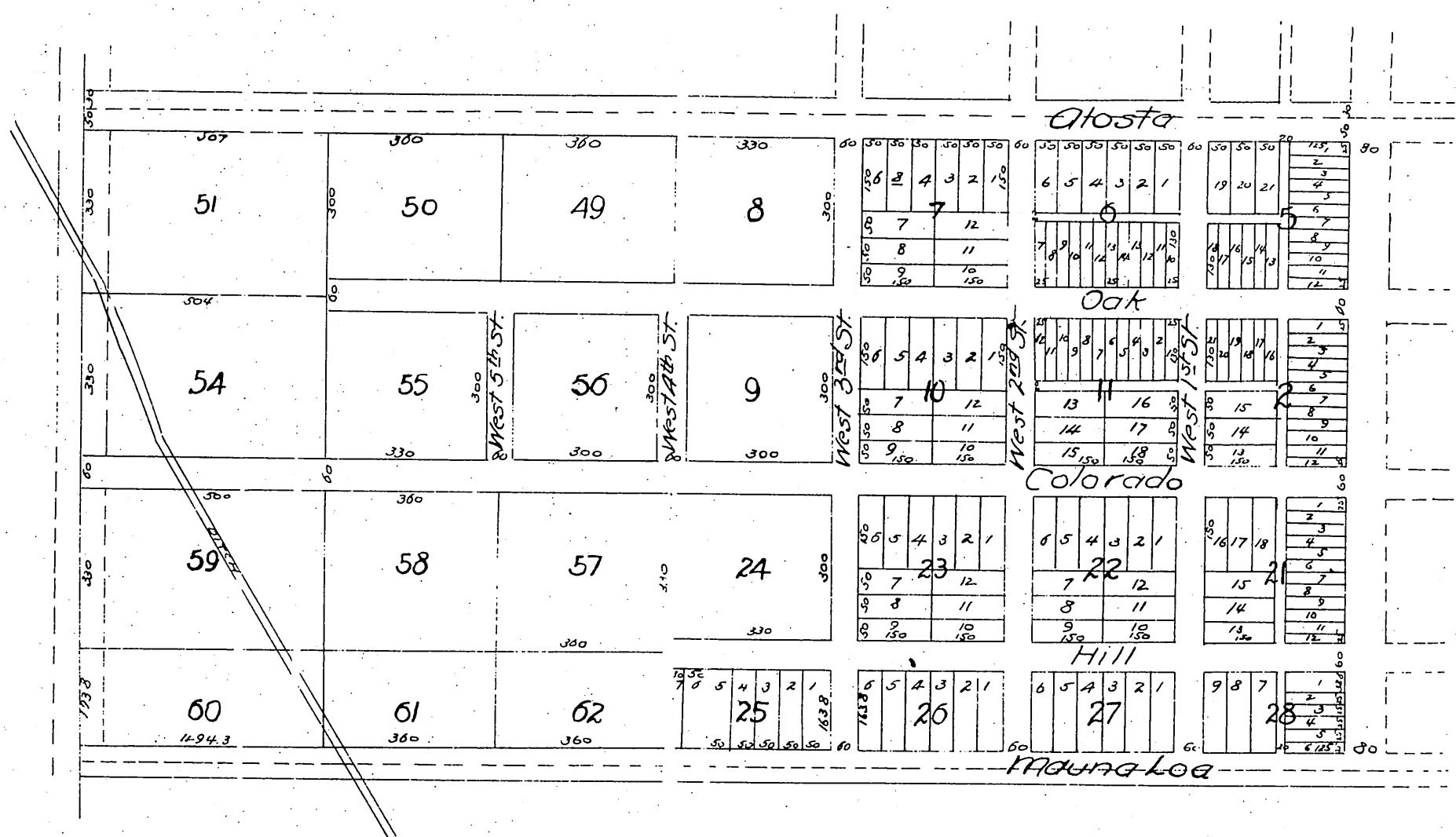
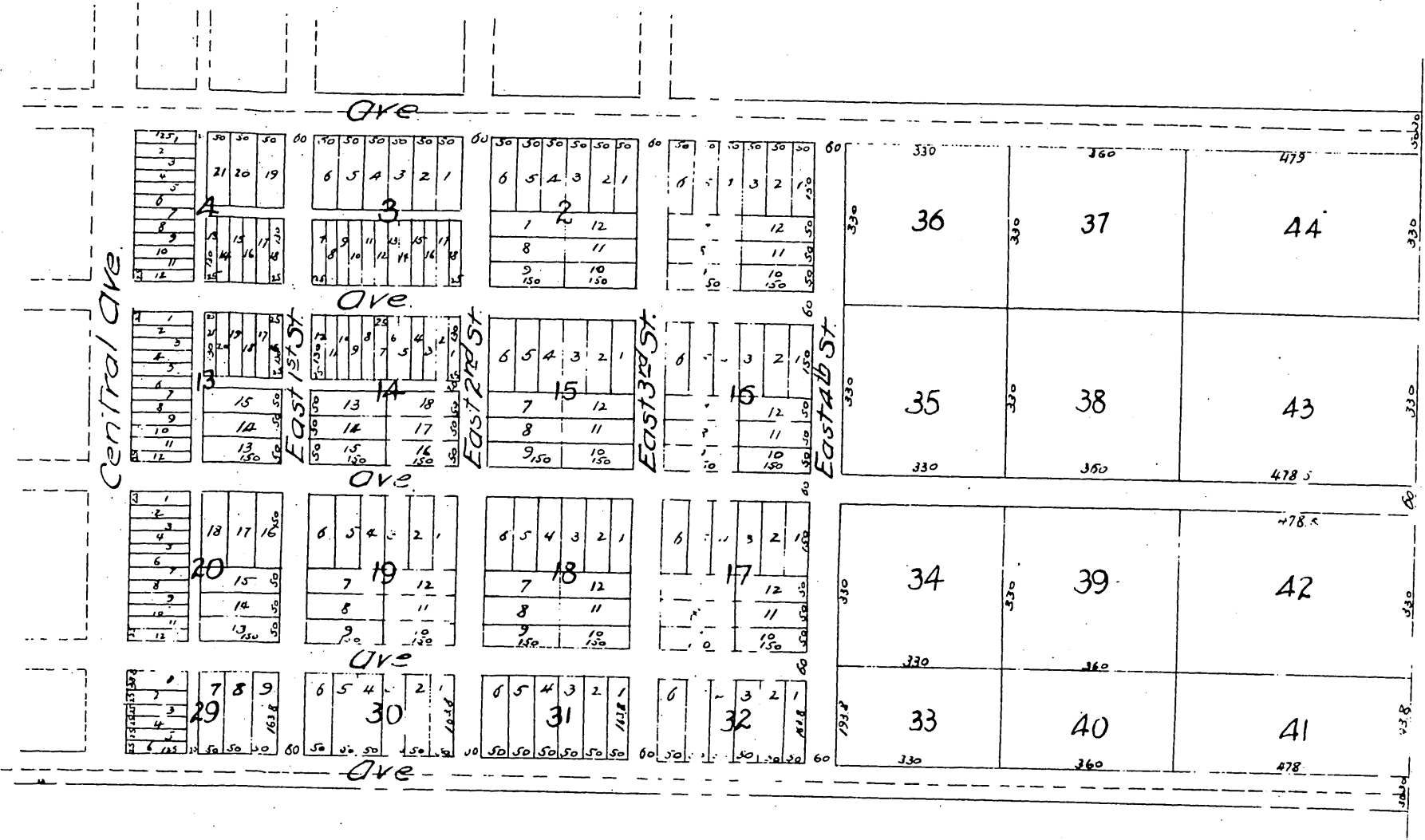
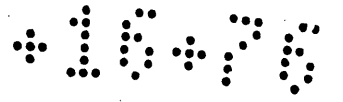


# Le Mars Addition TO THE Town of Alosta

Being the N 1/2 of the S 1/2 of Sec. 31 Town 1 North  
Range 9 West Los Angeles County California.

Archer Engr. Pasadena Cal.  
Scale 200 to one inch.





A full, true and correct copy of the original  
 (reduced to the scale of 300 feet to one inch)  
 recorded May 14, 1887 at 12 min past 3 P.M.  
 at request of F. Sartori.

Frank A. Gibson County Recorder  
 By George Bugbee Deputy