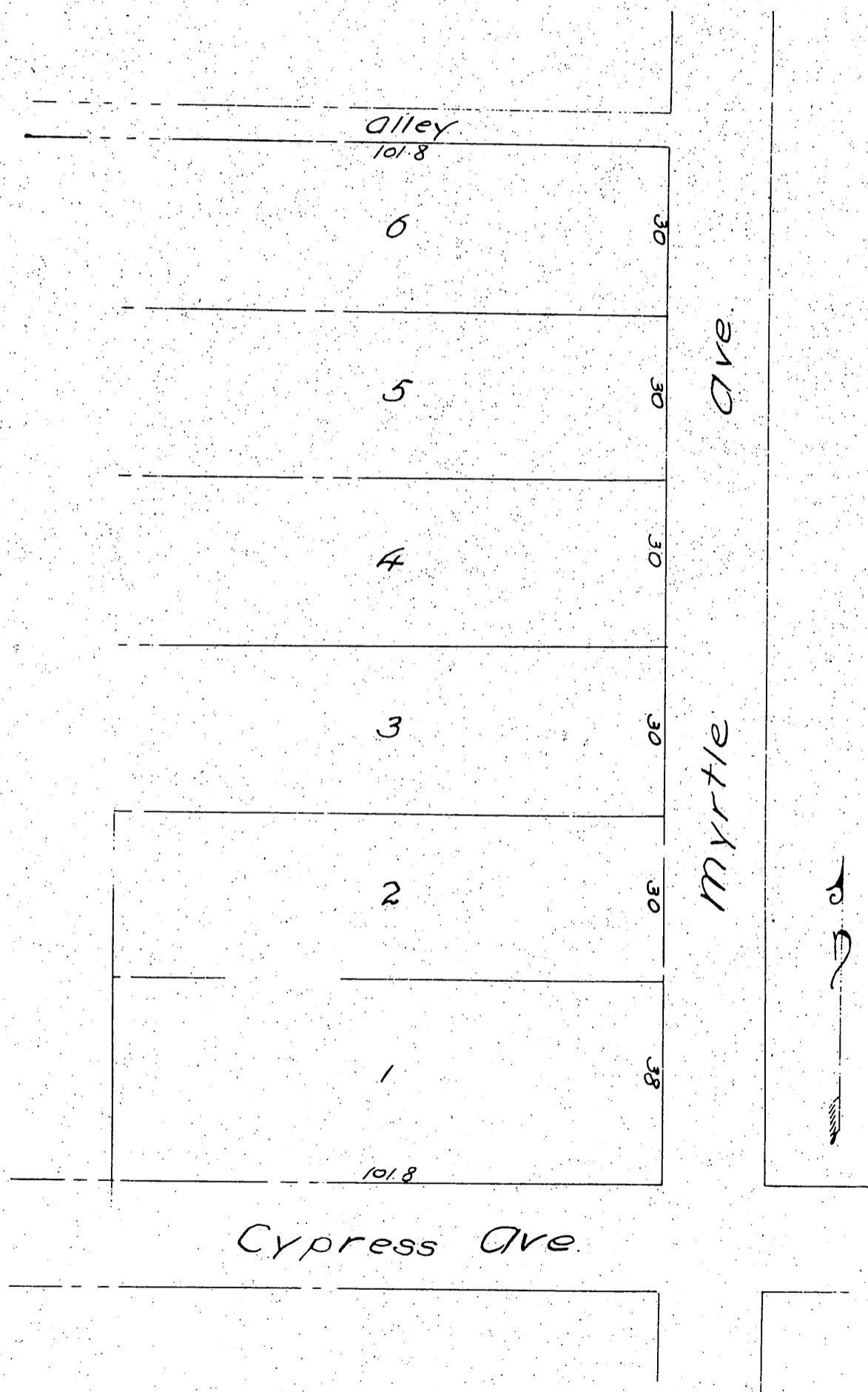


# Badeaus Subdivision

of Lots 2- & 25 Block 11 Monrovia  
Los Angeles Co. Cal

Surveyed by J.S. McDonald<sup>C.E.</sup> Monrovia  
Scale 1 in. = 25 ft.



A full, true and correct copy of the original  
recorded May 7, 1887 at 31 min. past 10 A.M.  
at request of W.C. Badeau.

Frank R. Gibson County Recorder  
By Geo. Bugbee Deputy