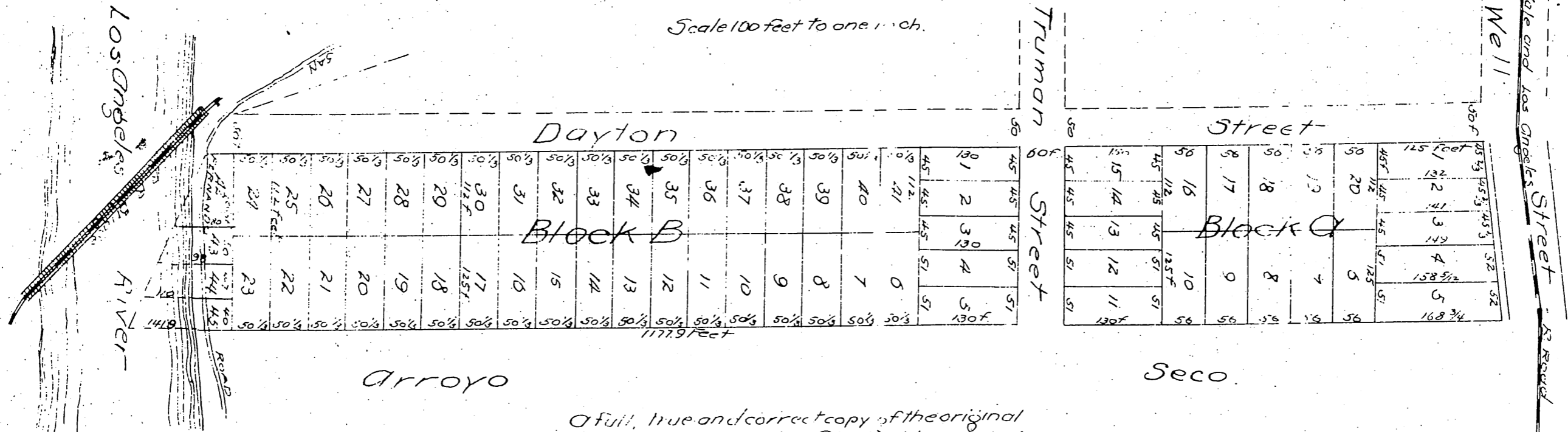




Subdivision OF Eddy's Tract

being Lots from 51 to 60 inclusive of
Lettier's tract, in East Los Angeles
Surveyed in March 1887 by O. Leon Cervantes Surveyor
Scale 100 feet to one inch.



A full, true and correct copy of the original
(reduced to the scale of 150 feet to one inch)
recorded May 7, 1887 at 43 m. n. past 2 P.M.
at request of P.G. Eddy

Frank A. Gibson County Recorder
By Geo. Bugbee Deputy.