

Appendix to Town of Ramona No. 2

The exclusive right is also reserved to the San Gabriel Wine Co. its successors or assigns to construct and operate Street Railroads on all the streets and Avenues.

Los Angeles May 9, 1887.

San Gabriel Wine Co.  
by J. De Barth Shorb President.

State of California }  
County of Los Angeles } ss.

On this 9th day of May in the year one thousand eight hundred and eighty seven before me G. H. Dunsmoor County Clerk and ex-officio Clerk of the Superior Court in and for said County personally appeared J. De Barth Shorb known to me to be the President of the Corporation that executed the within instrument and acknowledged to me that such corporation executed the same

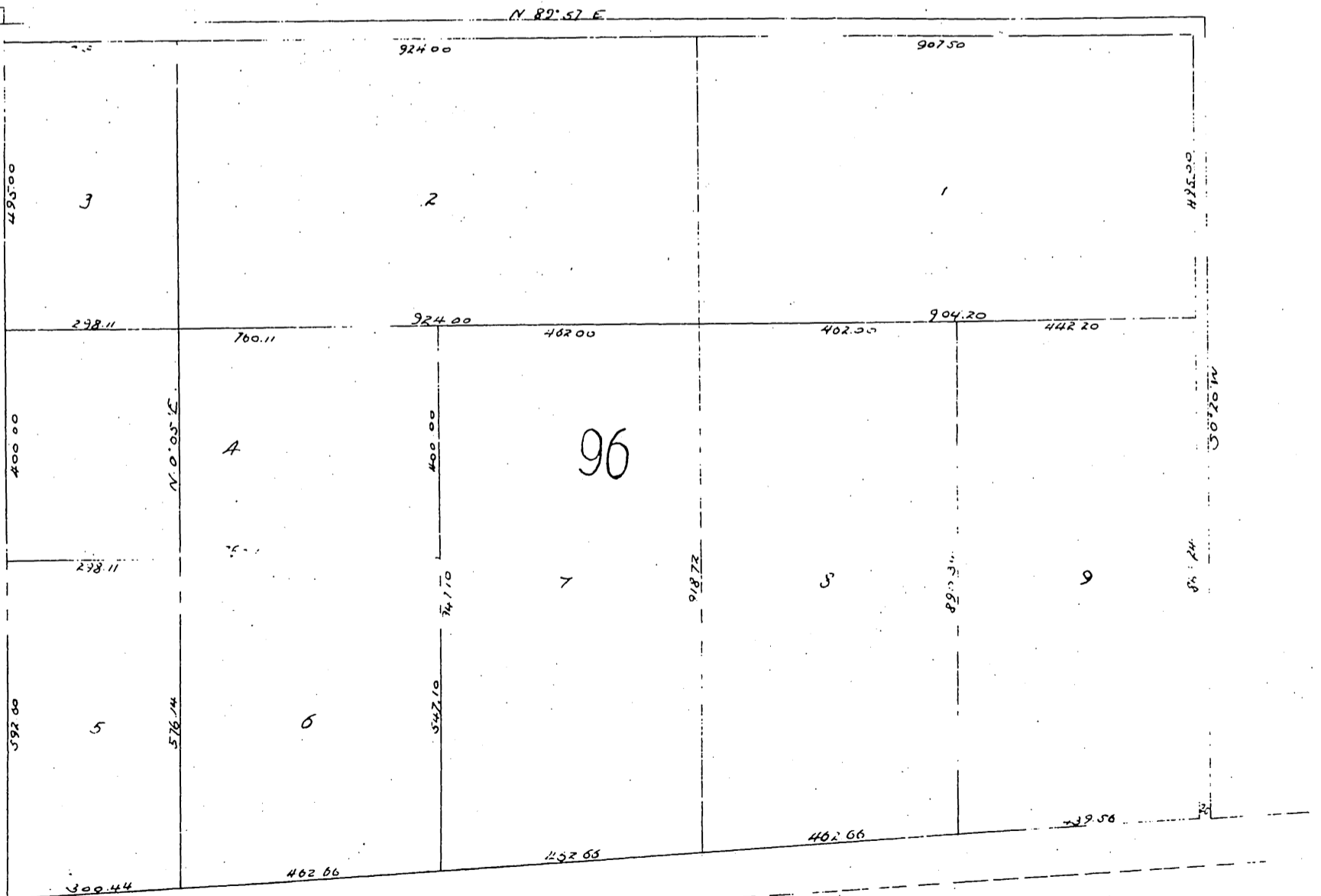
In Witness Whereof I have hereunto set my hand and affixed the seal of said Court the day and year in this certificate first above written

Seal of Superior Court

G. H. Dunsmoor  
County Clerk, ex-officio Clerk of said Superior Court  
by J. B. Fanning Deputy.

A full true and correct copy of the original recorded May 9th 1887 at 3 1/2 P.M. at request of San Gabriel Wine Co.

Frank A. Gibson County Recorder  
By George Bugbee Deputy.



A full, true and correct copy of the original (reduced to the scale of 250 feet to one inch) recorded May 9, 1887 at 35 min. past 9 O. M. at request of San Gabriel Wine Company.

Frank A. Gibson County Recorder  
By George Bugbee Deputy.