

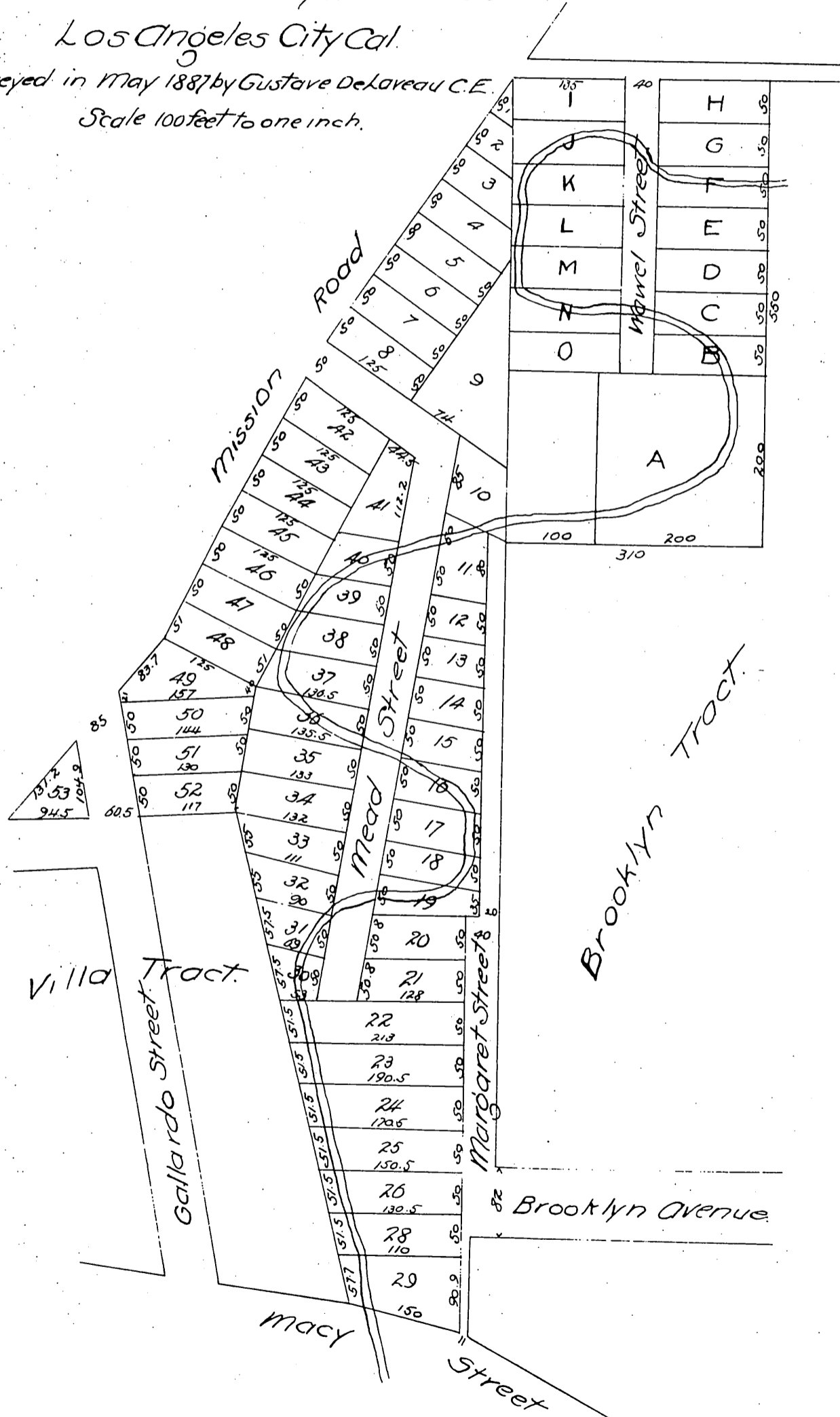
MAP OF Alfred Moores Subdivision

of an addition to the Brooklyn Tract situated in

Los Angeles City Cal.

Surveyed in May 1887 by Gustave Delaveau C.E.

Scale 100 feet to one inch.



A full, true and correct copy of the original
(reduced to the scale of 150 feet to one inch)
recorded May 9, 1887 at 17 min. past 11 A.M.
at request of Alfred Moore.

Frank A. Gibson County Recorder.
By George Bugbee Deputy.