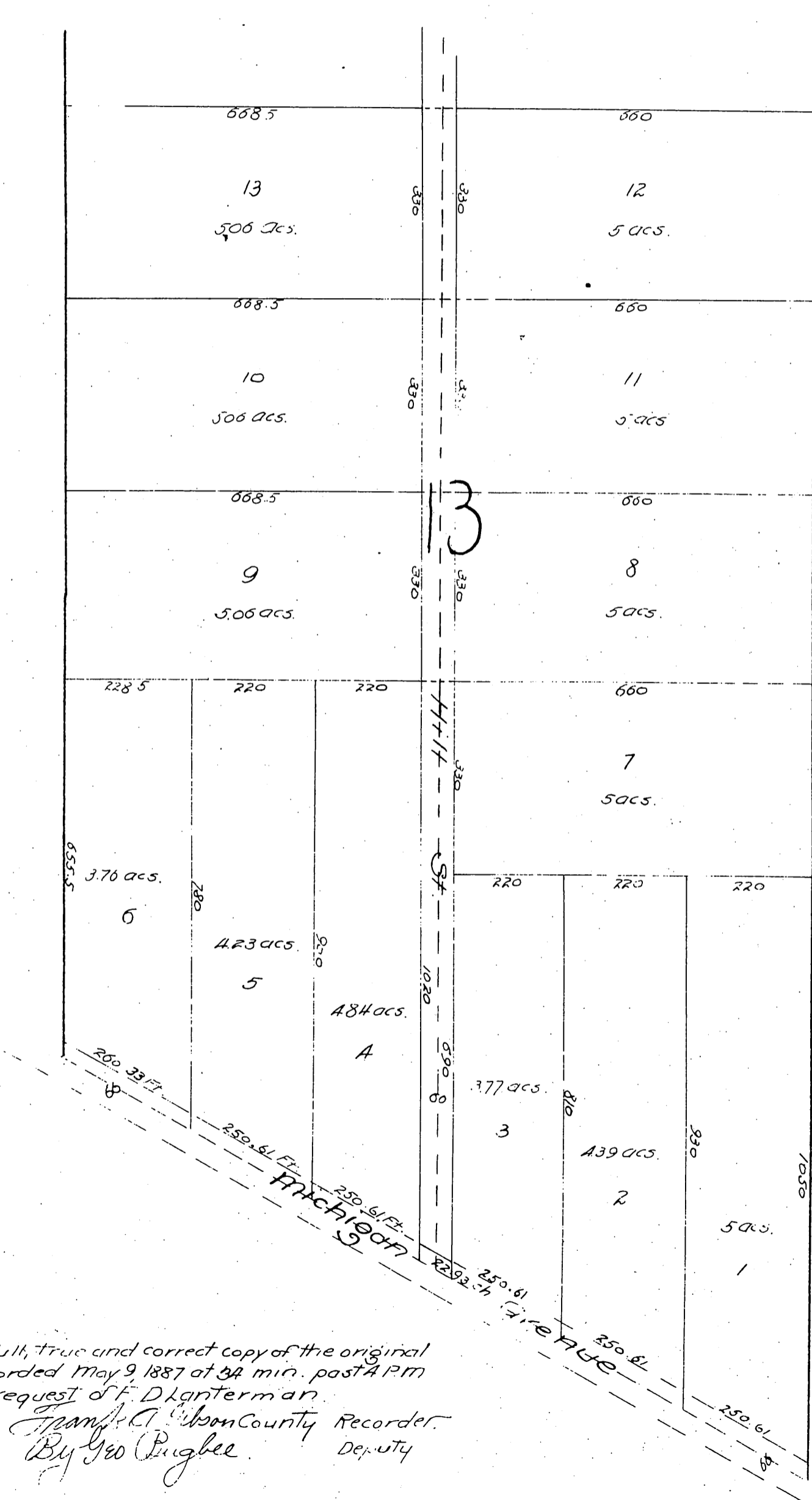


PLAT  
 OF  
 F. D. Lanterman's Subdivision  
 of the Southern portion of Lot 13 Rancho La Cañada  
 F. D. Lanterman Sur.

NOTE  
 All measurements are taken to the middle of the Roads  
 and are in feet unless otherwise mentioned.



A full, true and correct copy of the original  
 recorded May 9 1887 at 34 min. past 4 P.M.  
 at request of F. D. Lanterman.

Frank C. Wilson County Recorder.  
 By Geo. Pugbee Deputy