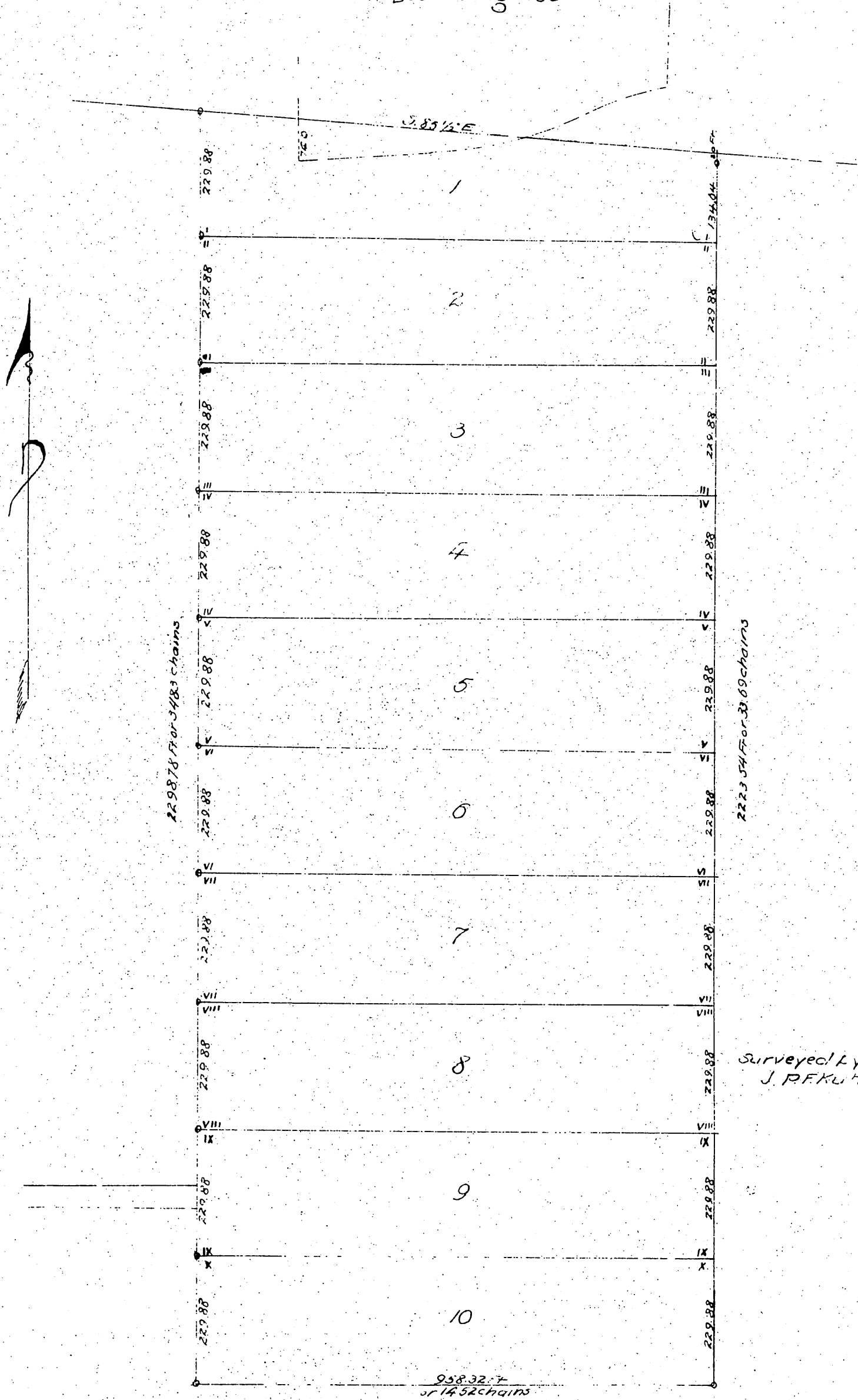


# The Ames Tract

a portion of the

## Rancho San Rafael

Being land acquired by John G. Ames from  
W. S. Brodrick, dated May 25<sup>th</sup> 1874 and recorded  
in Book 29 Page 480



Surveyed by  
J. P. Kuhlmann  
Jan 1887

A full, true and correct copy of the original  
recorded May 10<sup>th</sup> 1887 at 35 min past 8 A.M.  
at request of C. F. Culver  
J. H. Gibson County Recorder  
By M. Dugbee Deputy