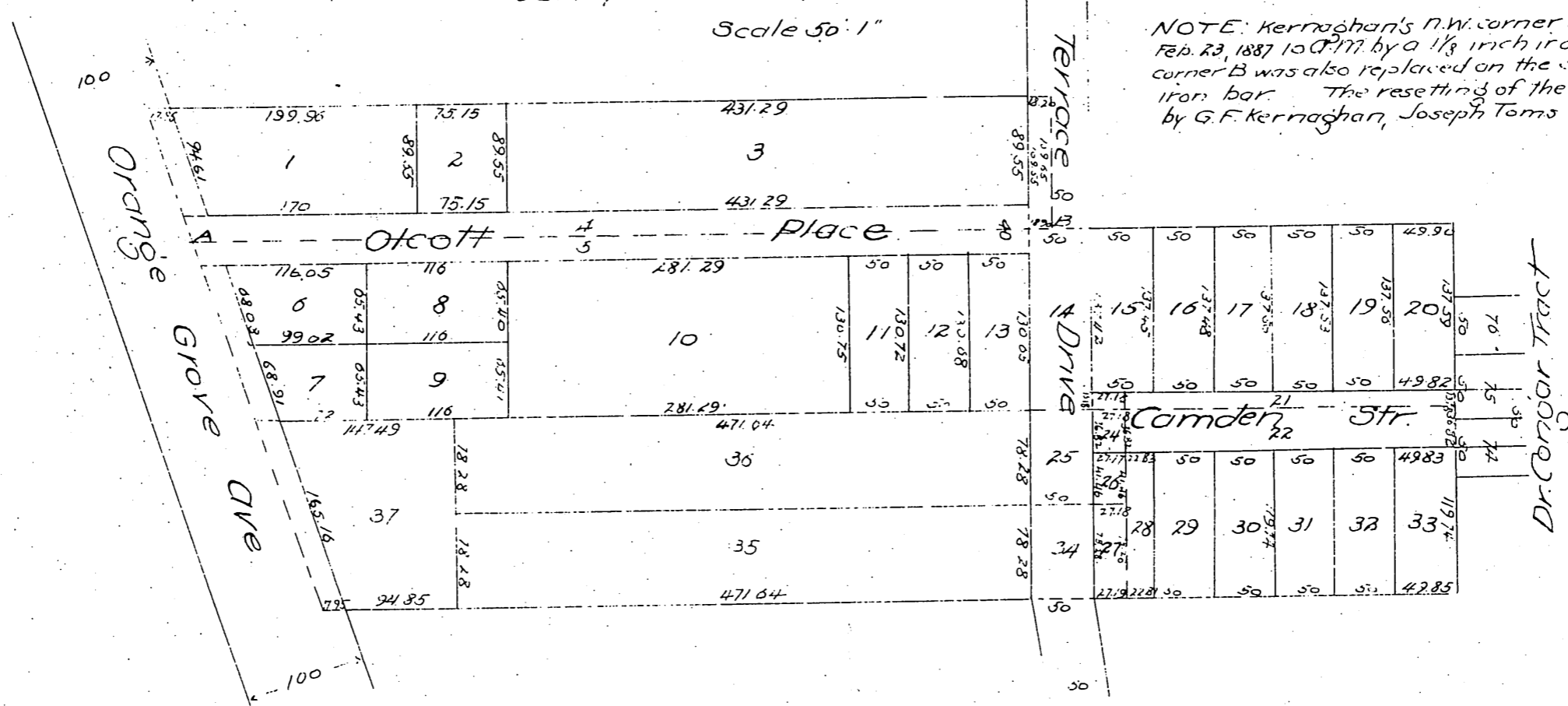


MAP OF Kernaghan and Arnold's

Subdivision of the North 7 acres of Lot 2 Div. C and the South
1.82 acres of Lot 3 Berry and Elliott's Subdivision of Div. C
of the Lands of the San Gabriel Orange Grove Association
Pasadena, Cal.

Surveyed Feb. 1887 by J. M. Willard C.E.

Scale 50:1"



(Full true and correct copy of the original
(reduced to the scale of 120 feet to one inch)
recorded May 10, 1887 at 23 min. 11 sec. P.M.
at request of G. F. Kernaghan
Frank A. Gibson Coun.
J. M. Willard