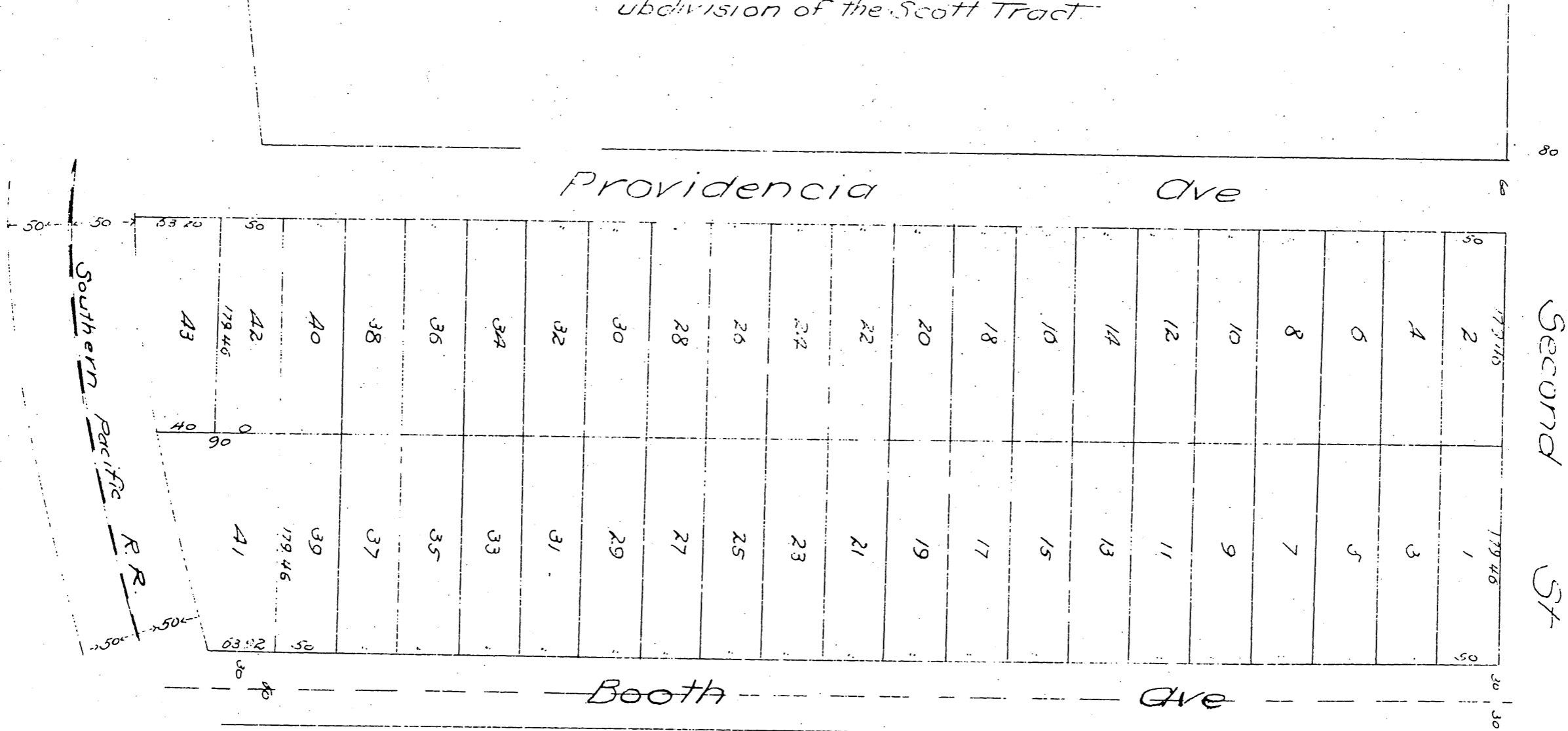


Leath's Subdivision

Part of Block 101 of the P.L. Ward D Co.
subdivision of the Scott Tract.



A full, true and correct copy of the original
recorded May 11, 1887 at 28 min. past 10 A.M.
at request of Geo. W. Booth
Mary A. Gibson County Recorder.
By Geo. Buzbee Deputy.

