

MAP

OF

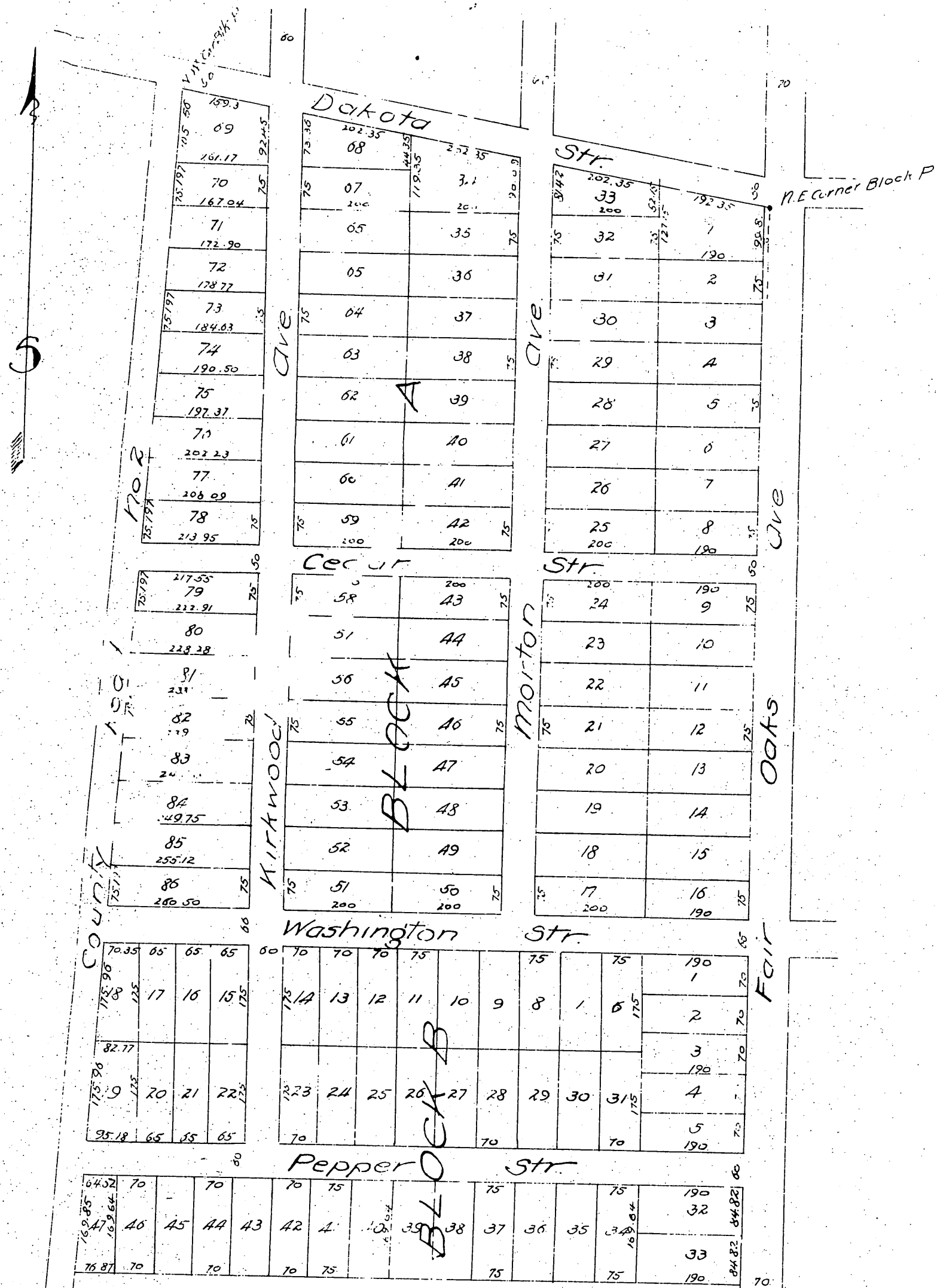
A. J. Painter's Subdivision

of North portion of Block P, of the
Subdivided lands of J. H. Painter and B. F. Ball

Pasadena, Cal.

Surveyed 1887 by J. M. Willard C.E.

Scale 120: 1"



A full, true and correct copy of the original
(reduced to the scale of 20 feet to one inch)
recorded May 12, 1887 at 6 min. past 12 M.
at request of Abstract & Title Insurance Co.
Frank A. Gibson County Recorder
By Geo. Bungee Deputy