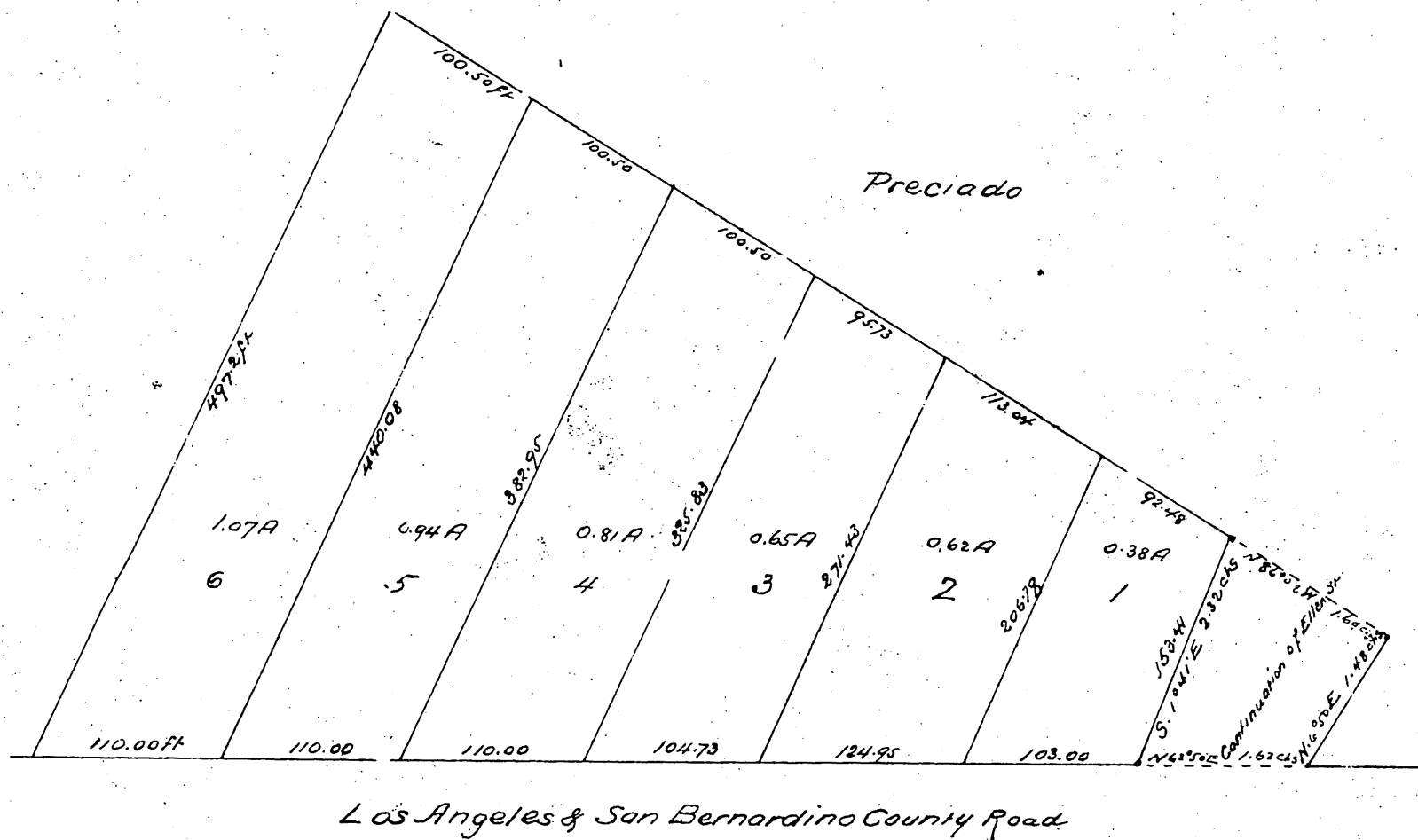




Official Plat
OF
Bates' Addition to Pomona
Los Angeles Co Cal
Subdivided April 20th 1887 F.H. Reed & Co Civil Engineers
(Reduced to Scale of 100 feet to 1 inch)



A full, true and correct copy of the original
(reduced to 100ft to 1 inch) recorded May 13th 1887 at
11³⁵ A.M. at request of F.D. Foy.

Frank A. Gibson County Recorder
by Geo. Bugbee Deputy

Ellen St