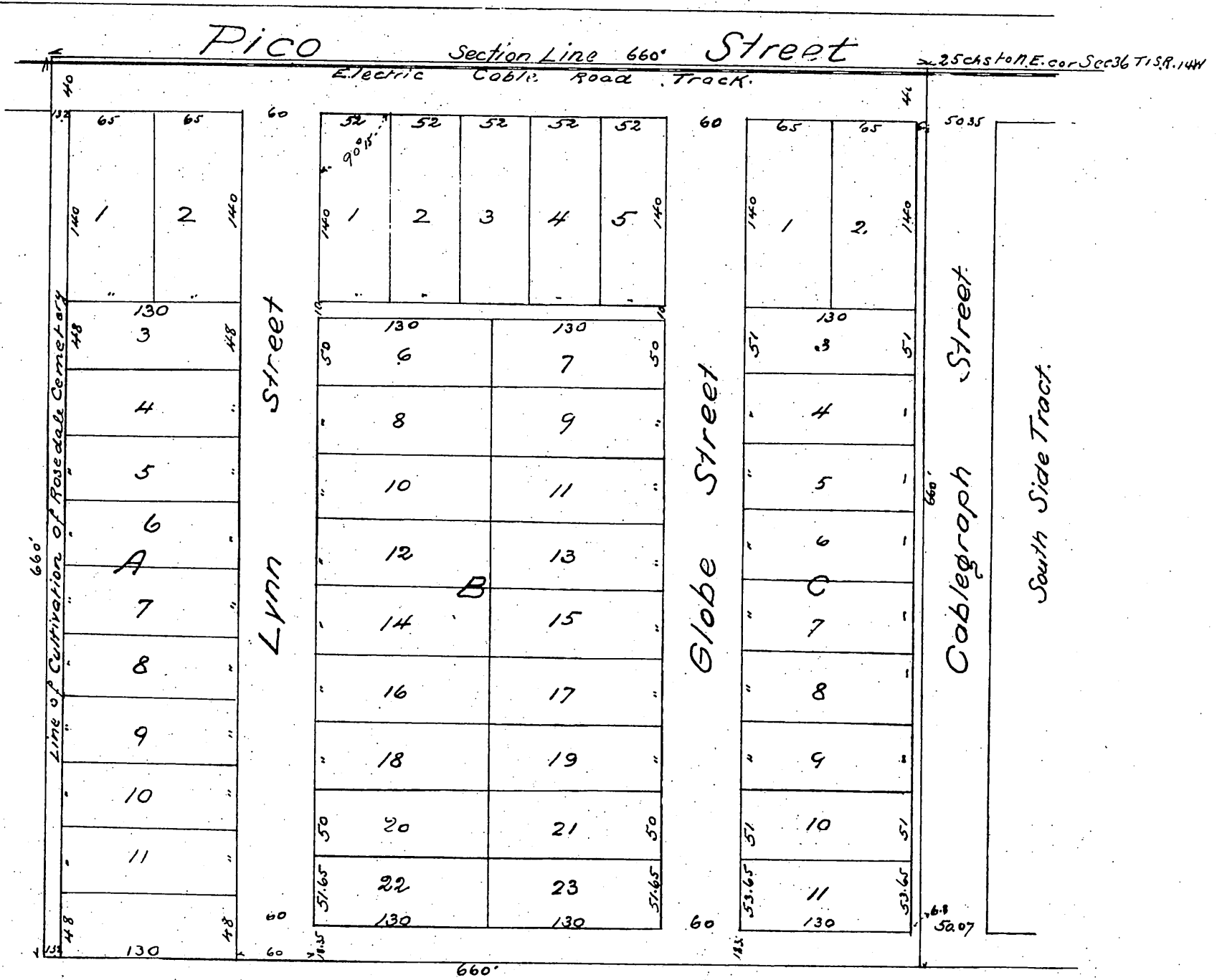


Map of Urmy Homestead Tract

Being a Subdivision of 10 acres situated centrally in the NW 1/4 of the NE 1/4
of Section 36, T1, S. R. 14 W. S. B. M.

Surveyed by Fred Eaton May 1887 Scale 50ft = 1 in
(Reduced to 100ft = 1 inch)



A full, true and correct copy of the original (reduced to
scale of 100 ft to one inch) recorded May 13th 1887 at 3³⁰ P.M.
at request of H. N. Urmy
Frank A. Gibson County Recorder
by Geo. Bugbee Deputy.