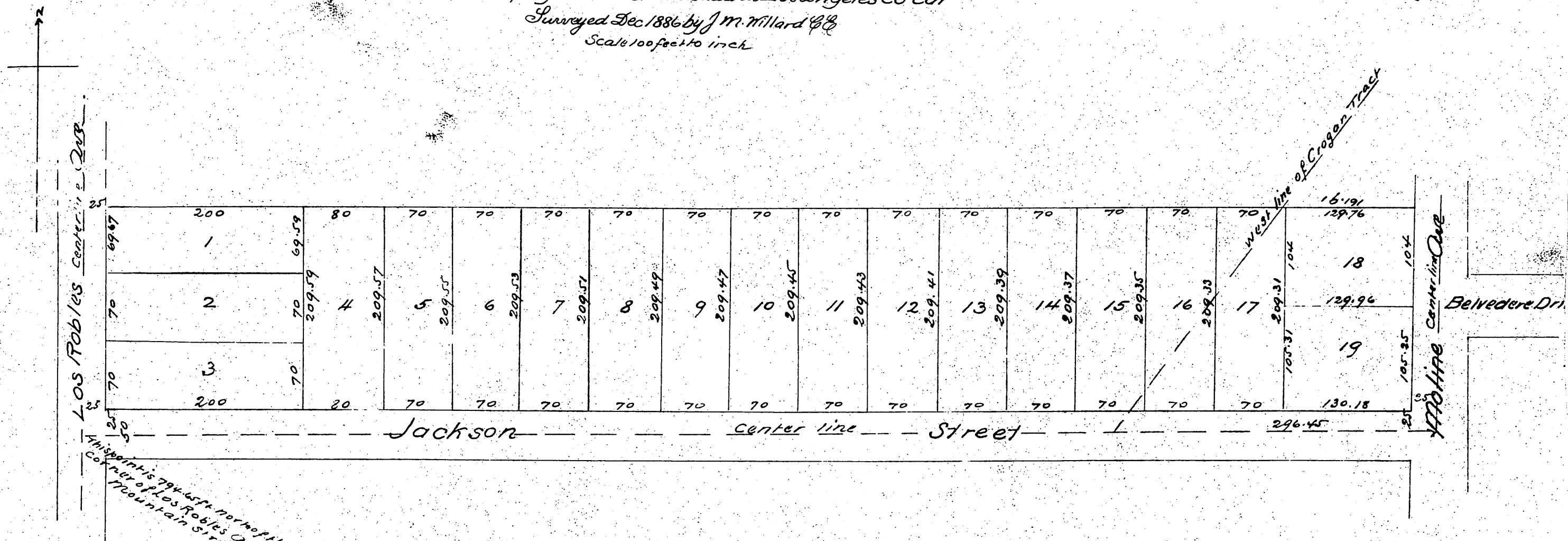


Map of G. W. Barnhart's Subdivision

OF A PORTION OF
Block S the subdivided lands of J. H. Painter and B. F. Ball and 17²³/₁₀₀₀ acres
of the Grogan Tract Pasadena Los Angeles Co Cal
Surveyed Dec 1886 by J. M. Millard & Co
Scale 100 feet to inch



A full true and correct copy of the original recorded May 14th 1887
and 2nd Q. M. at request of G. W. Barnhart
Frank A. Gibson County Recorder
By George Bugher Deputy