

Southern District Agricultural Park.

Santa Barbara Street

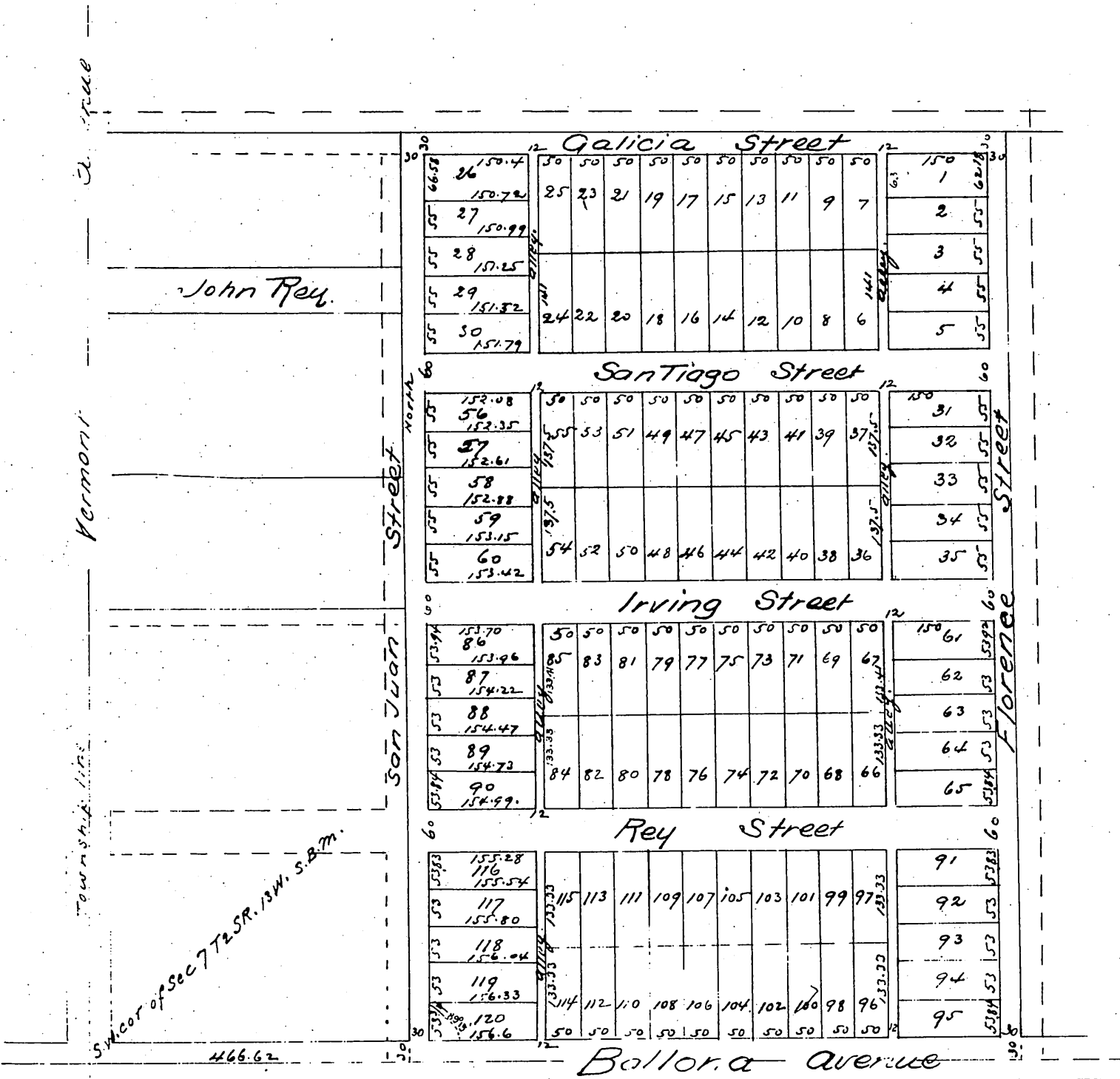
# MAP OF

## John Rey's Subdivision Situate in the S.W. 1/4 of Section 7 T2 S R 13 W S.B.M. Los Angeles County California

Surveyed at request of John Rey April 1887 by J. A. Hernal Surr. C. E.

Scale 100 feet to an inch

(Reduced to 200 feet)



A full, true and correct copy of the original (reduced to 200 feet to one inch) recorded May 16 1887 at 10:23 a.m. at request of John Rey.

Frank A. Gibson Co. Recorder, 17.  
By Geo. R. Bugbee Deputy