



Vineyard Tract

Duarte Cal

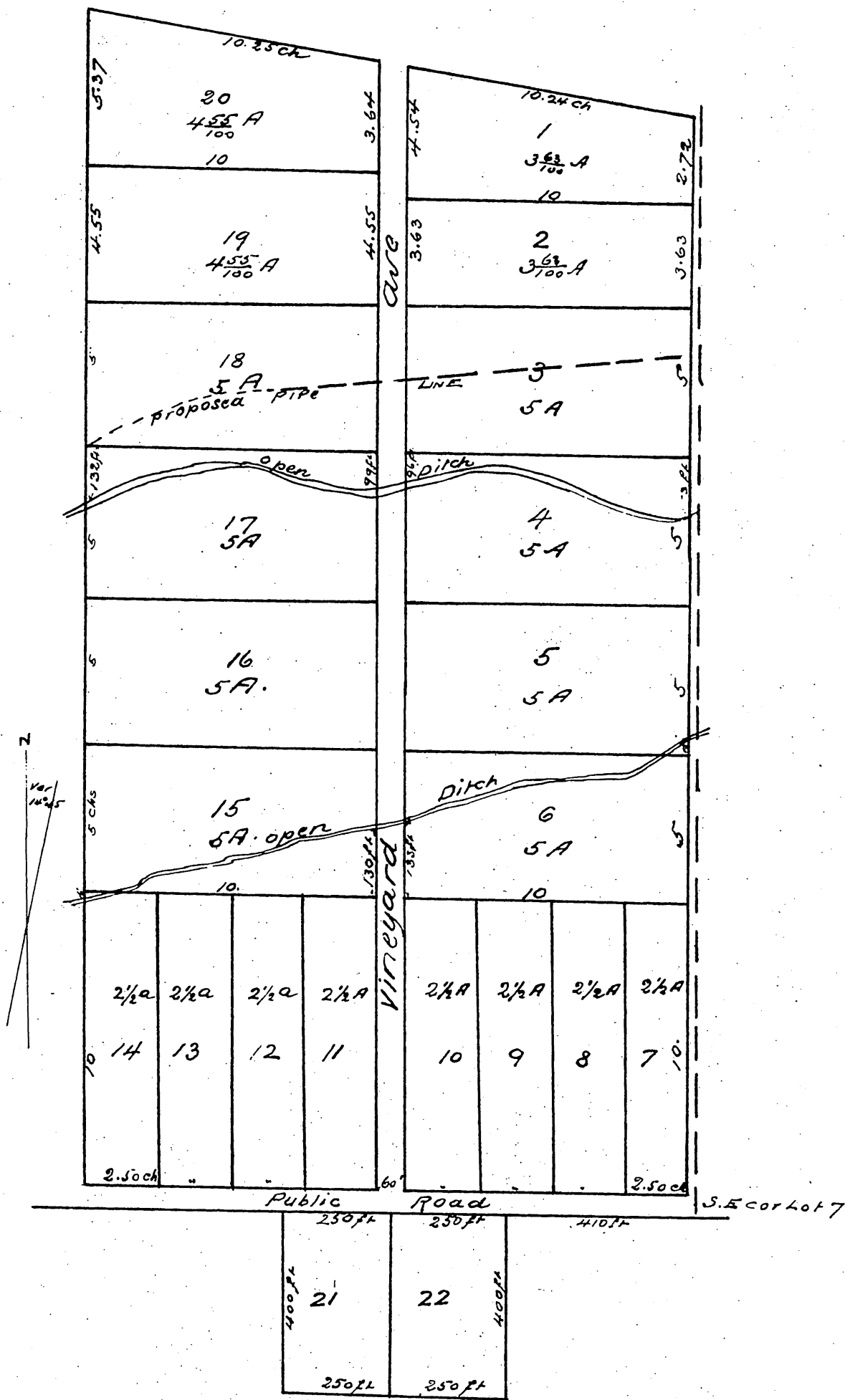
Being a Subdivision of Lots Two(2) Seven(7) and part of Ten(10)

Sec 29, Rancho Azusa de Duarte as recorded in Book 6, page 81

Mis Records Los Angeles Co Cal

Surveyed Ap 87 by J.S. McDonald

Scale 300 ft to 1 inch



a full, true and correct copy of the original recorded May 17th 1887 at 10³ a.m. at request of H.C. Witmer

Frank A. Gibson County Recorder
By Geo. Bugbee Deputy