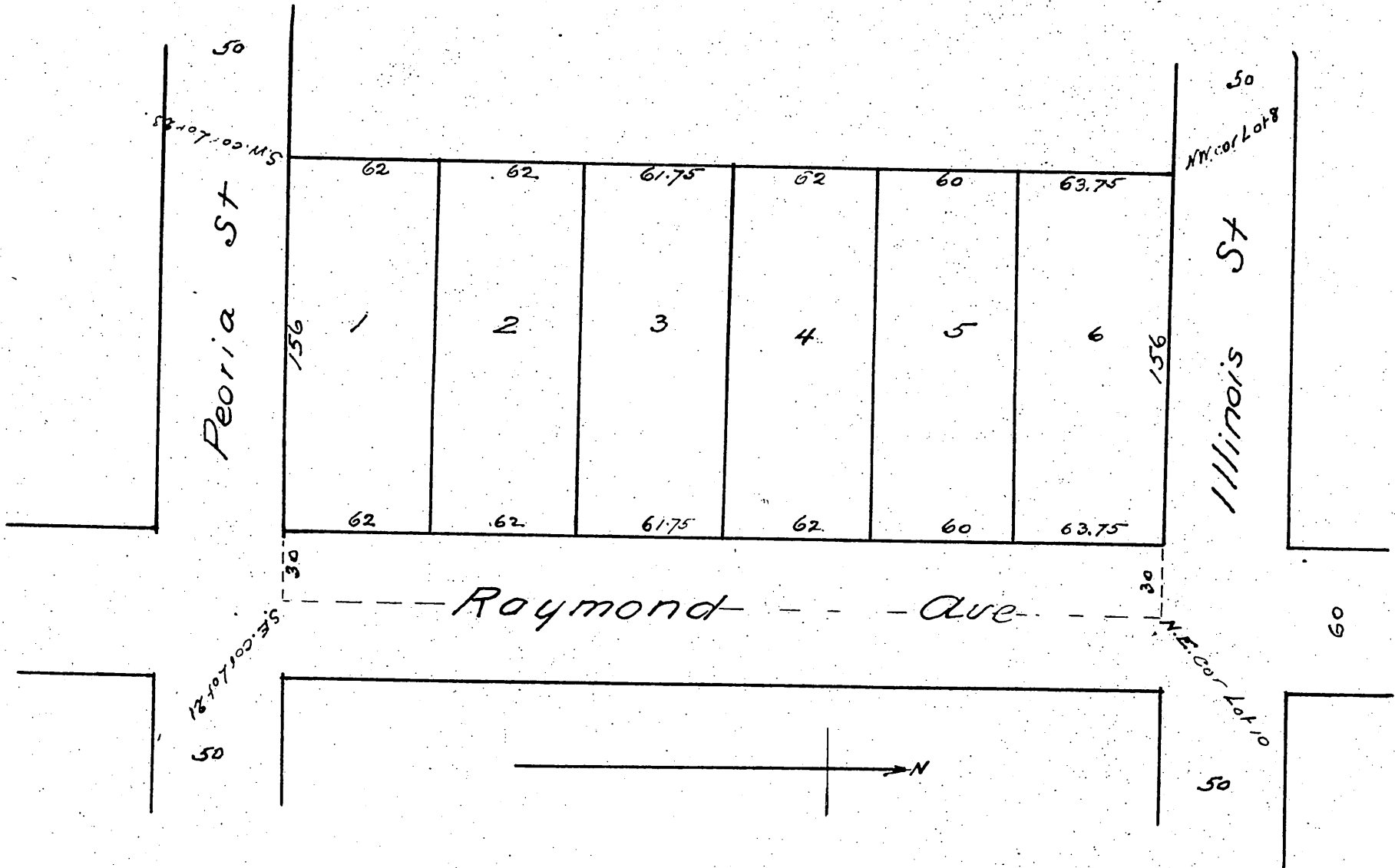


# MAP of Andrews and Stowell's Subdivision.

of Lots 8, 9, 10, 21, 22 & 23 of Miller and Carters Subdivision in B1K U  
of the Painter and Ball Tract Pasadena  
as recorded in Book 10 page 20 Mis. Rec.

Surveyed April 1887 by Baldwin & Jessup Surr's.

Scale 60ft to the inch



A full true and correct copy of the original recorded 17<sup>th</sup> May  
1887 at 14<sup>3</sup> M at request of M. J. Painter  
Frank A. Gibson County Recorder  
By George Bugbee Deputy.