

MAP

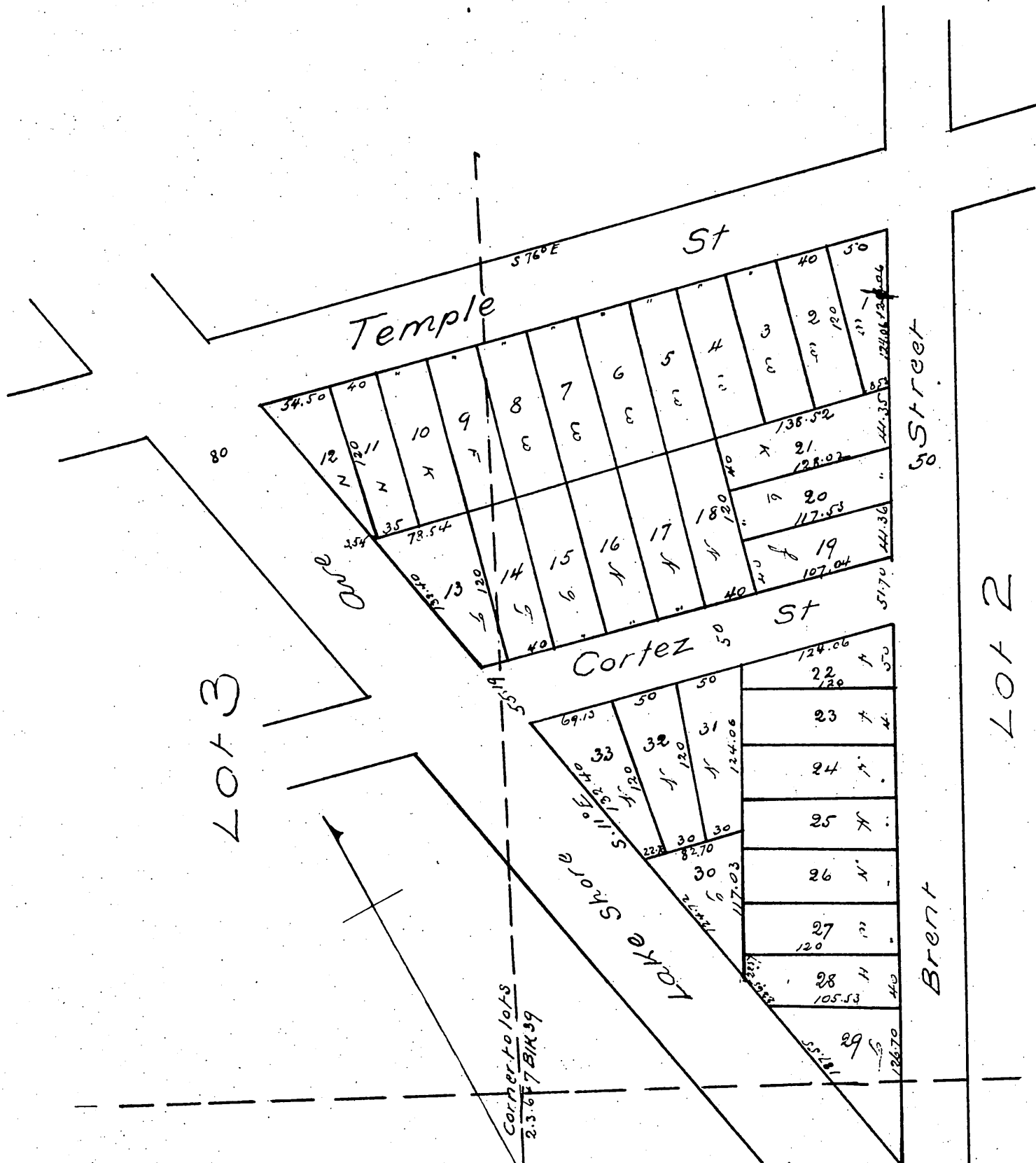
OF

Geo W Kings Subdivision

of part of Lots 2 & 3 Block 39 Hancock's Survey
being a resubdivision of Block 22 as
recorded in Book 6 page 39 Mis Records

Surveyed Jan 1887 by W. S. M. Blue

Scale 100 ft 1 inch



A full true and correct copy of the Original
 recorded May 18th 1887 at 10⁵⁰ A.M. at request of
 Geo W. King
 Frank A. Gibson, County Recorder
 By Geo Bugbee Deputy