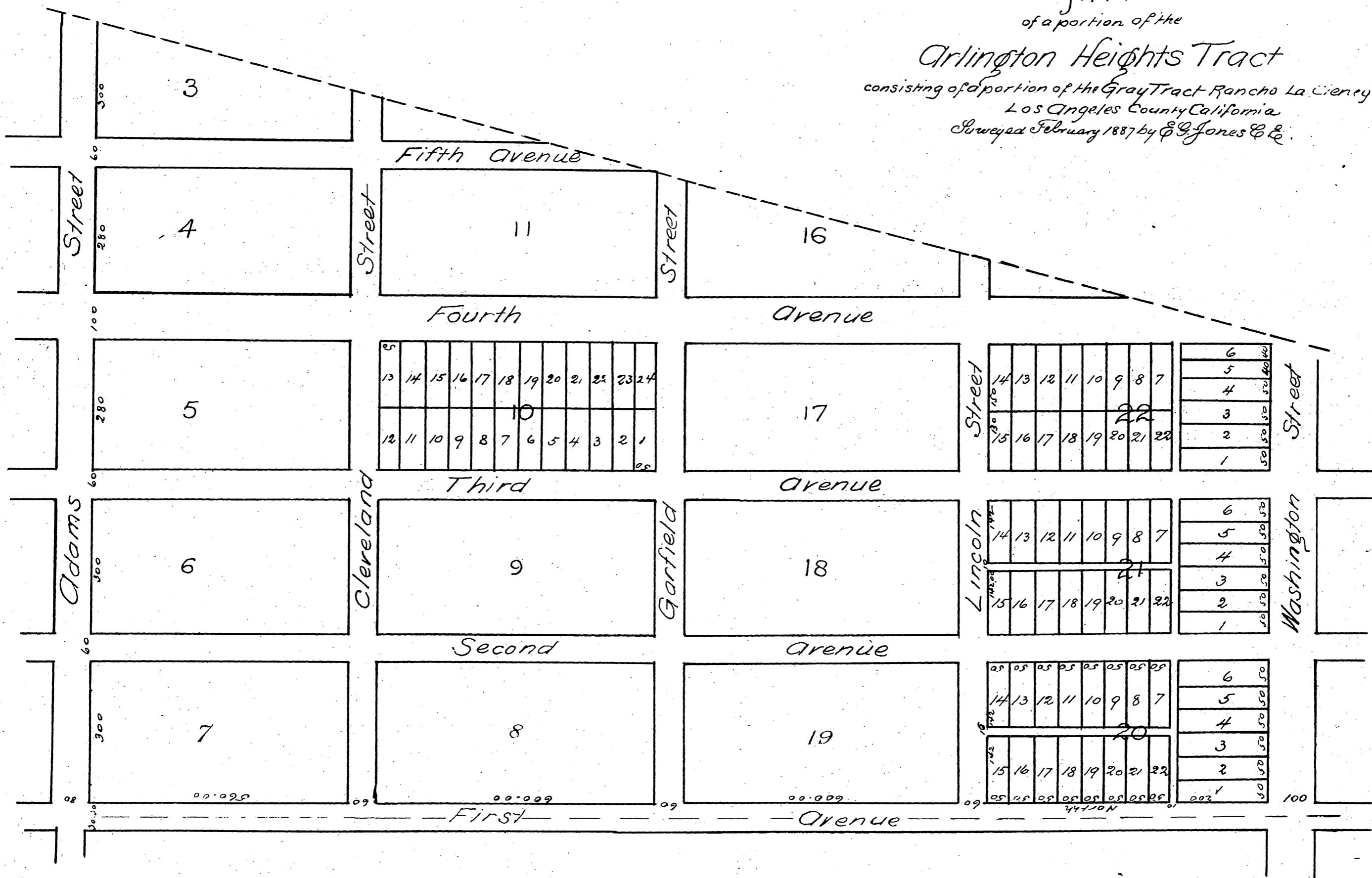


MAP  
of a portion of the  
Arlington Heights Tract  
consisting of a portion of the Gray Tract Rancho La Cienega -  
Los Angeles County California  
Surveyed February 1887 by E. G. Jones & Co.



A full true and correct copy of the original recorded May 19<sup>th</sup> 1887 with same at request of J. Wiesendanger  
Frank A. Gilson  
County Recorder  
Deputy.  
By George Bugbee