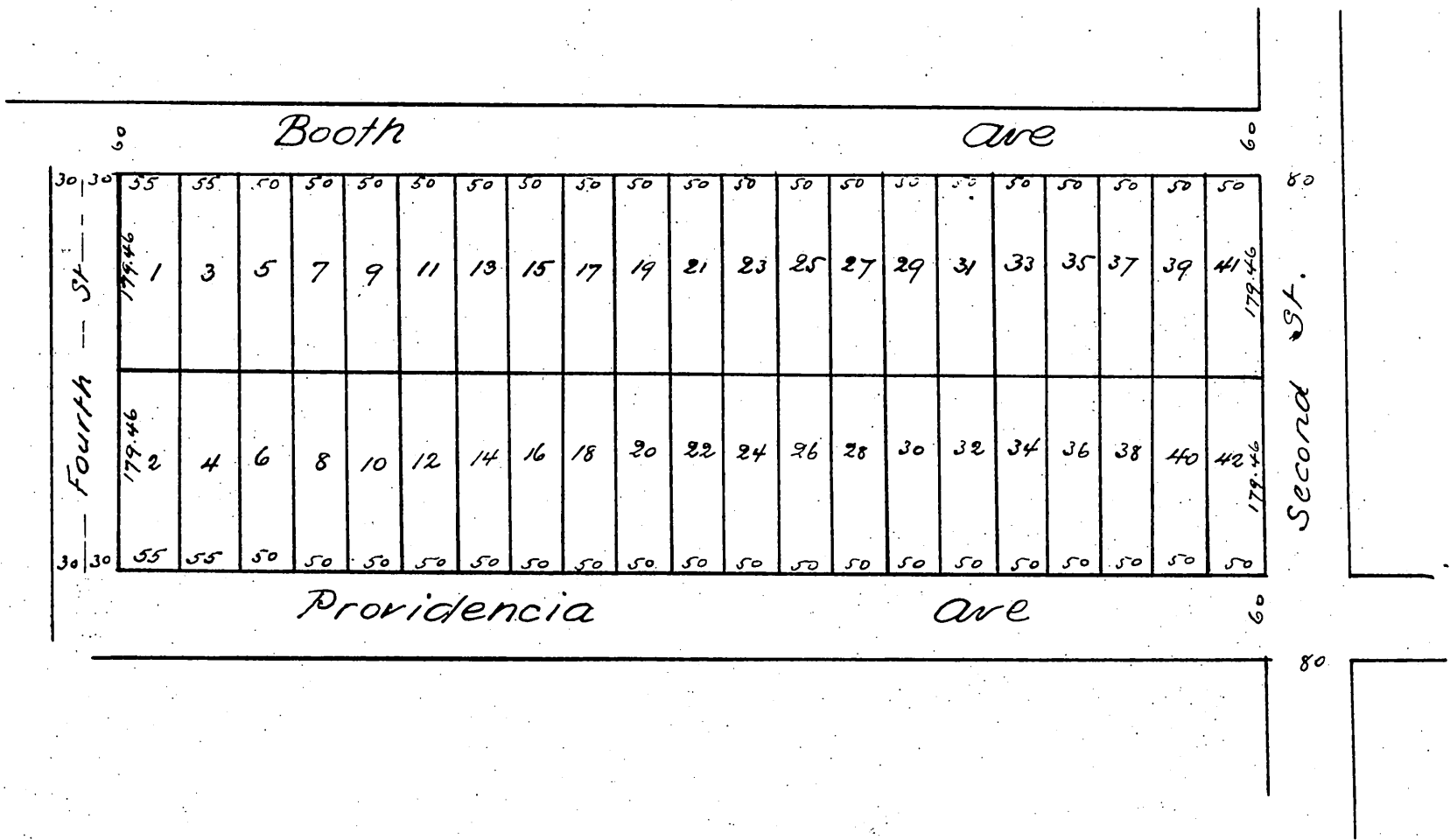


Binford Bros & Hardy's Subdivision
of Lot 8 Block 105
of the P.L.W. & D. Cos Subdivision
of the
Scott Tract
(Reduced to scale of 150 ft)



a full true and correct copy of the original (reduced to scale of 150 feet to inch) recorded May 20th 1887 at 10²⁰ A.M. at request of Binford and Hardy

Frank A. Gibson Recorder
By George Bugbee Deputy.