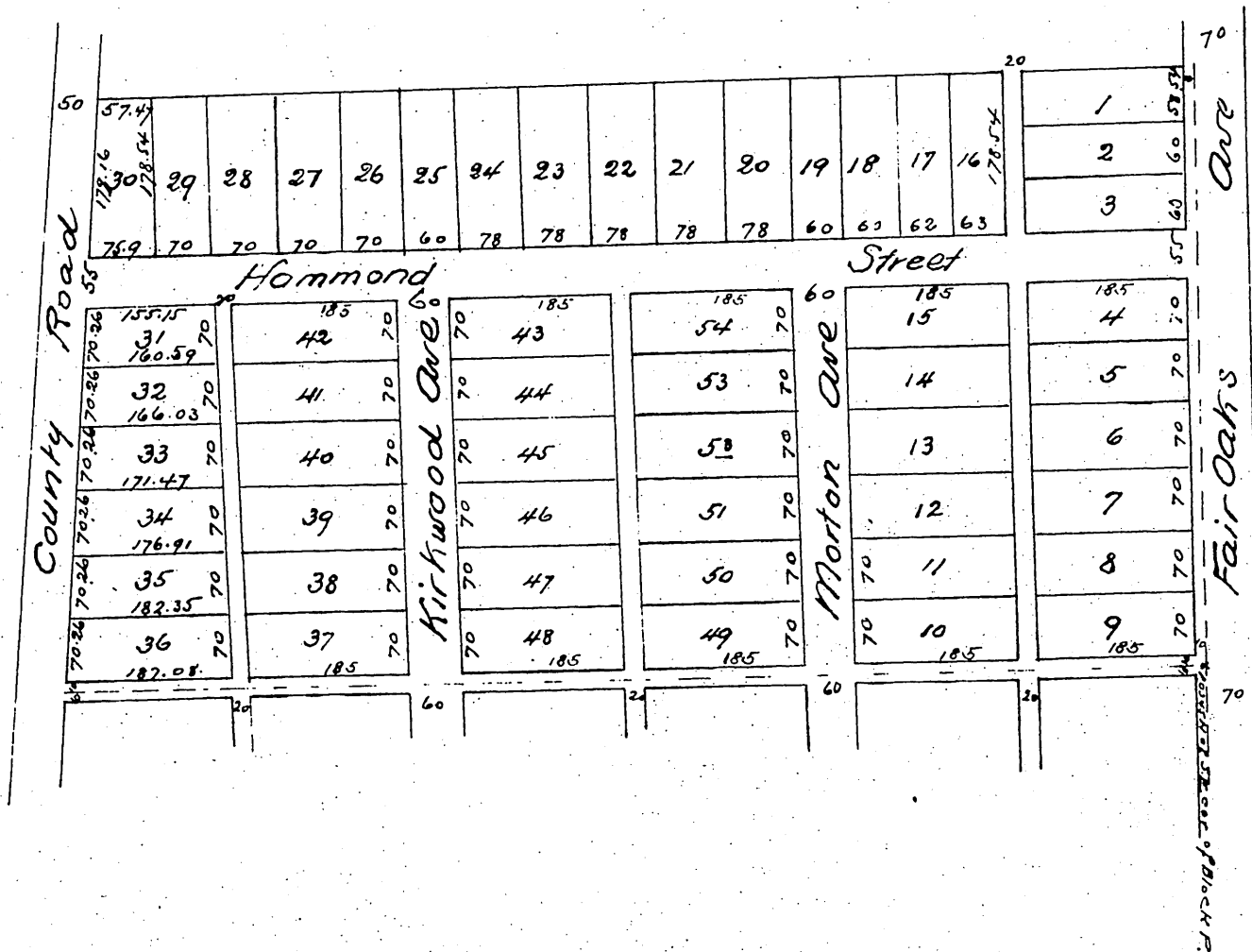


MAP
 of
W. G. Benedict & Co's Subdivision
 of 19.30 acres (more or less) in the central portion of Block 9
 of the subdivided lands of J. H. Painter & B. F. Ball
 as recorded in Book 4, Page 549 Miscellaneous Records of Los Angeles Co. Cal.
 Baldwin Jessup & Co Surveyors
 Scale 100ft to 1 inch
 (Reduced to 200ft inch)
 Cambell & March
 Draughtsmen

For Appendix see Book 48
 Page 187 Misc. Records



A full true and correct copy of the original (reduced to the
 scale of 200 feet to 1 inch) recorded May 24th 1887 at 1 50
 P. M. at request of W. G. Benedict

Frank A. Gibson County Recorder
 By Georg. Bigbee Deputy