

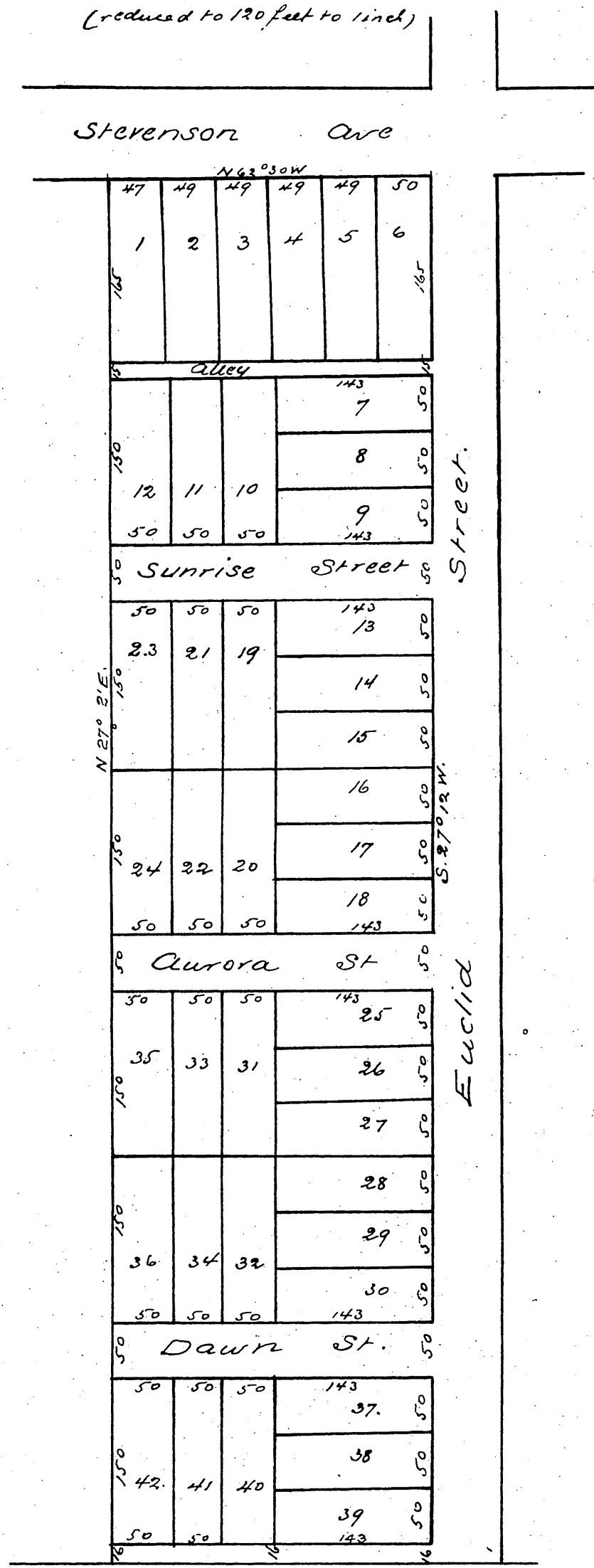
The Sunrise Tract

being a Subdivision of lot 1 of Workman & Hellmans

Subdivision of lot 2 and part of lot 1 Block 71

Hancocks Survey

Scale 60 feet to one inch
(reduced to 120 feet to one inch)



A full true and correct copy of the original (reduced to Scale of 120 ft to one inch) recorded May 20th 1887 at 4¹⁵ P.M. at request of E. S. Field
 Frank A. Gibson County Recorder
 by George Douglas deputy