



# MAP

OF

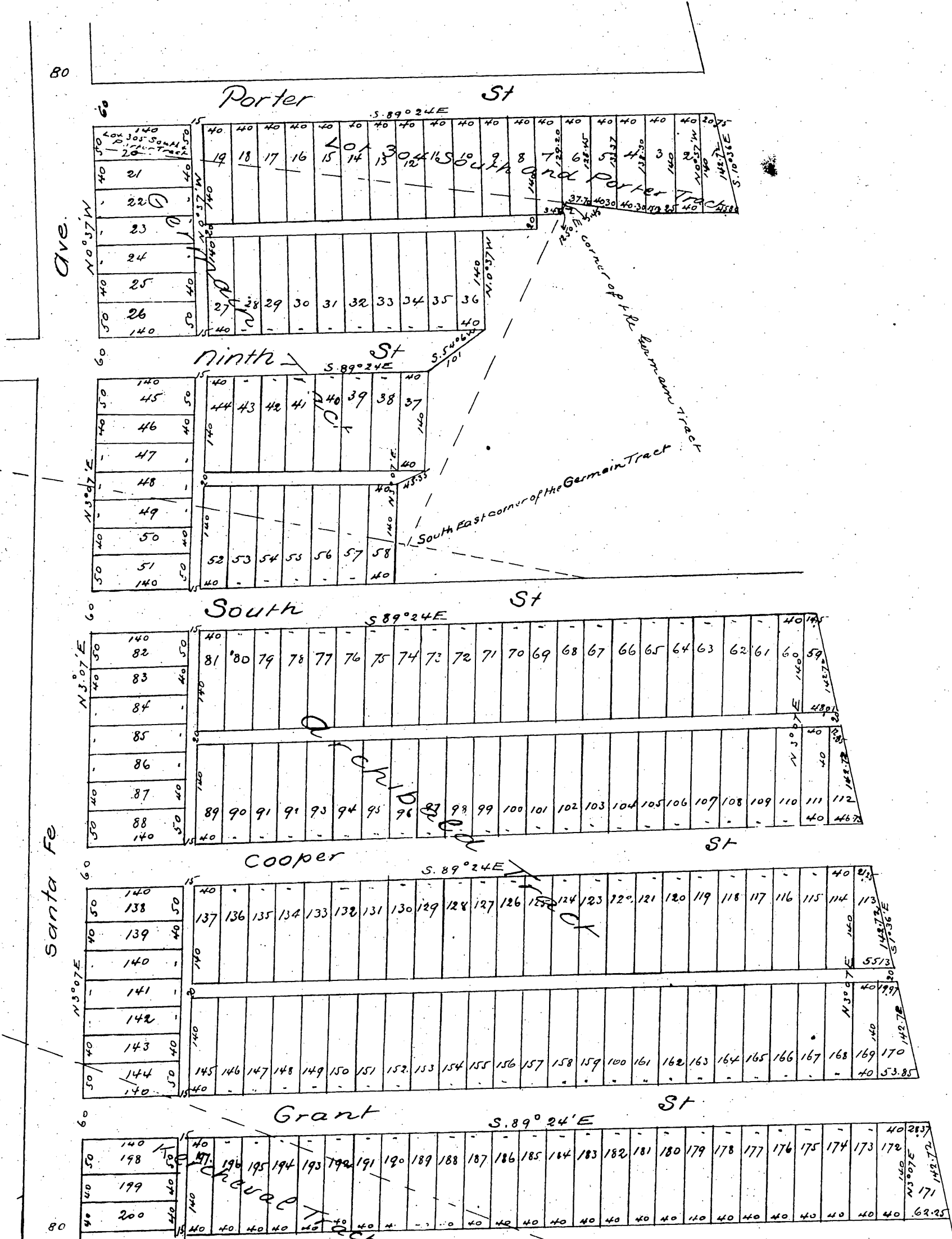
## M L Wicks Subdivision

of Lots 304 & 305 South & Porter Tract  
East portion of Germain & Archibald Tracts  
and part of Kercheval Tract

Los Angeles City Cal.

Surveyed 9 May 1887

Scale 100 ft to inch L. Freil C.E.



A full true and correct copy of the original (reduced to Scale of 150 ft to one inch) recorded May 21<sup>st</sup> 1887 at 27 min past 11 a m at request of M. L. Wicks  
 Frank A. Gibson County Recorder  
 By George Bugbee Deputy