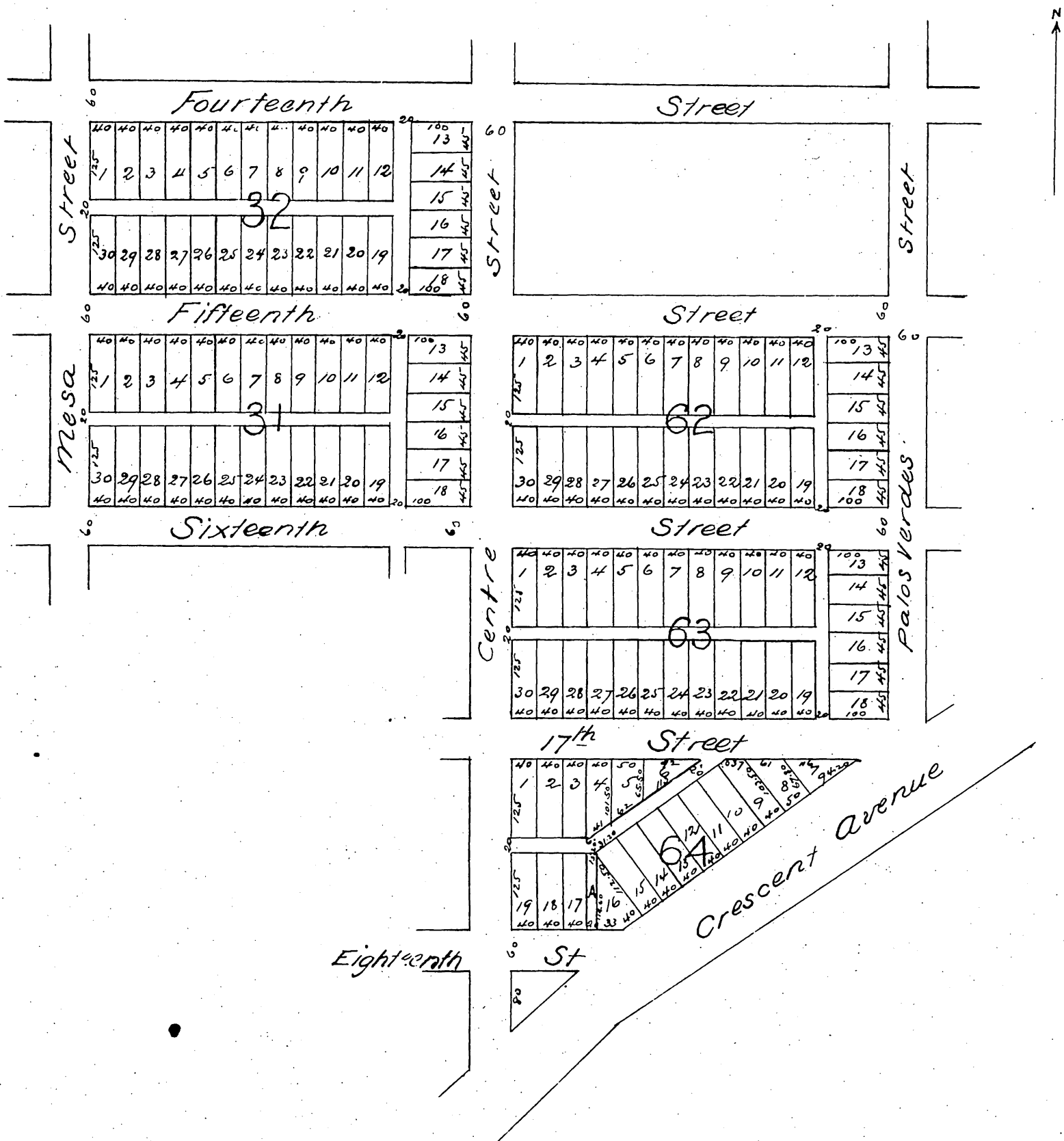


PLAT
 OF
Part of the Town of San Pedro
Los Angeles County California
 Showing the Harbor View Subdivision of Blocks 31, 32, 62, 63 and 64
 by the San Pedro Land & Improvement Company
 Scale 200 feet to one inch



A full true and correct copy of the
 original recorded May 21st 1887 at
 1⁴⁰ P.M. at request of N^o G Herckhoff.
 Frank A Gibson, County Recorder
 By George Bugbee Deputy