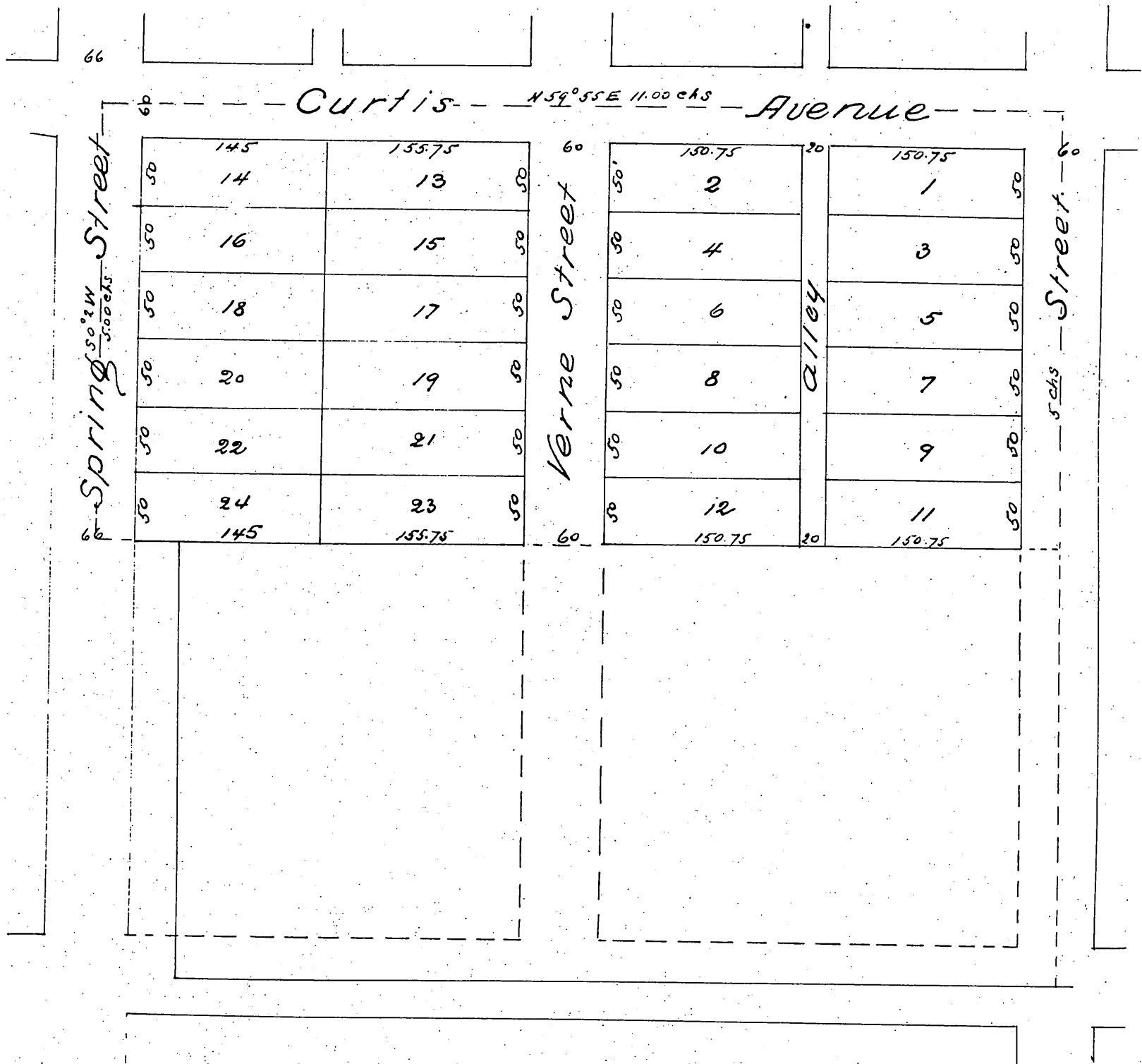


# MAP OF Knott's Subdivision of the

North  $\frac{1}{2}$  of the SW  $\frac{1}{4}$  of the NE  $\frac{1}{4}$  of the S. E.  $\frac{1}{4}$  of Section 6 T3S. R. 11W S. B.M.  
in the R<sup>o</sup> Santa Gertrudes

as surveyed by me in May 1887  
J. A. Barnard Sur. & C.E.

Scale 60 feet to an inch



A full true and correct copy of the original  
(reduced to scale of 100 feet to one inch) recorded  
May 24<sup>th</sup> 1887 at 9<sup>58</sup> A.M. at request of A. C. Hazard  
Frank A. Gibson County Recorder  
By George Bugbee Deputy