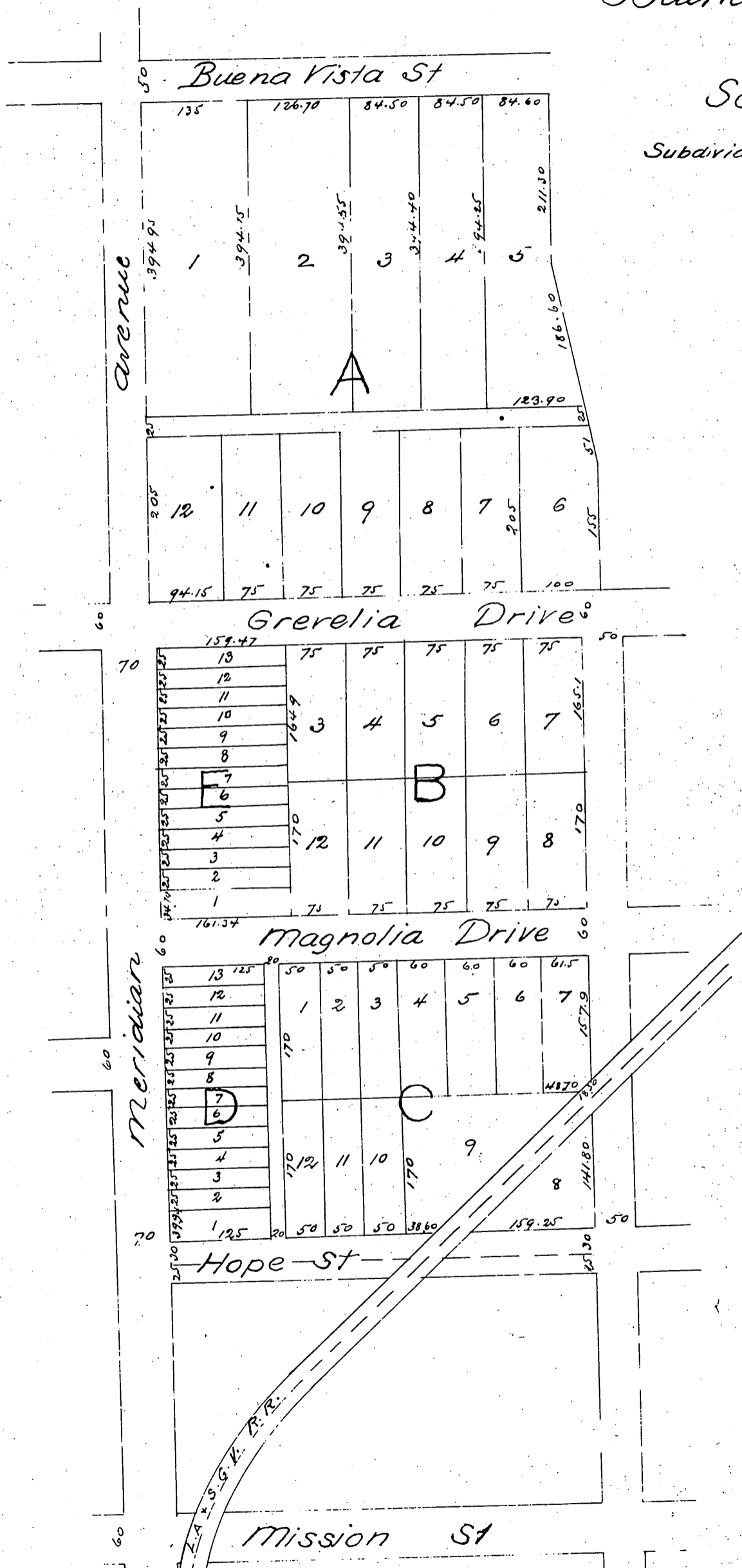


REPLOT MAP
of the
Buena Vista Tract
OF
South Pasadena
Subdivided by Wotkins & Lockwood
(Reduced to scale of 150 ft = 1 in)



a full, true and correct copy of the original (reduced to scale of 150 ft = 1 in) recorded May 24th 1887 at 12:45 M at request of Wotkins & Lockwood
Frank W. Gibson County Recorder
by - George Bigbee Deputy