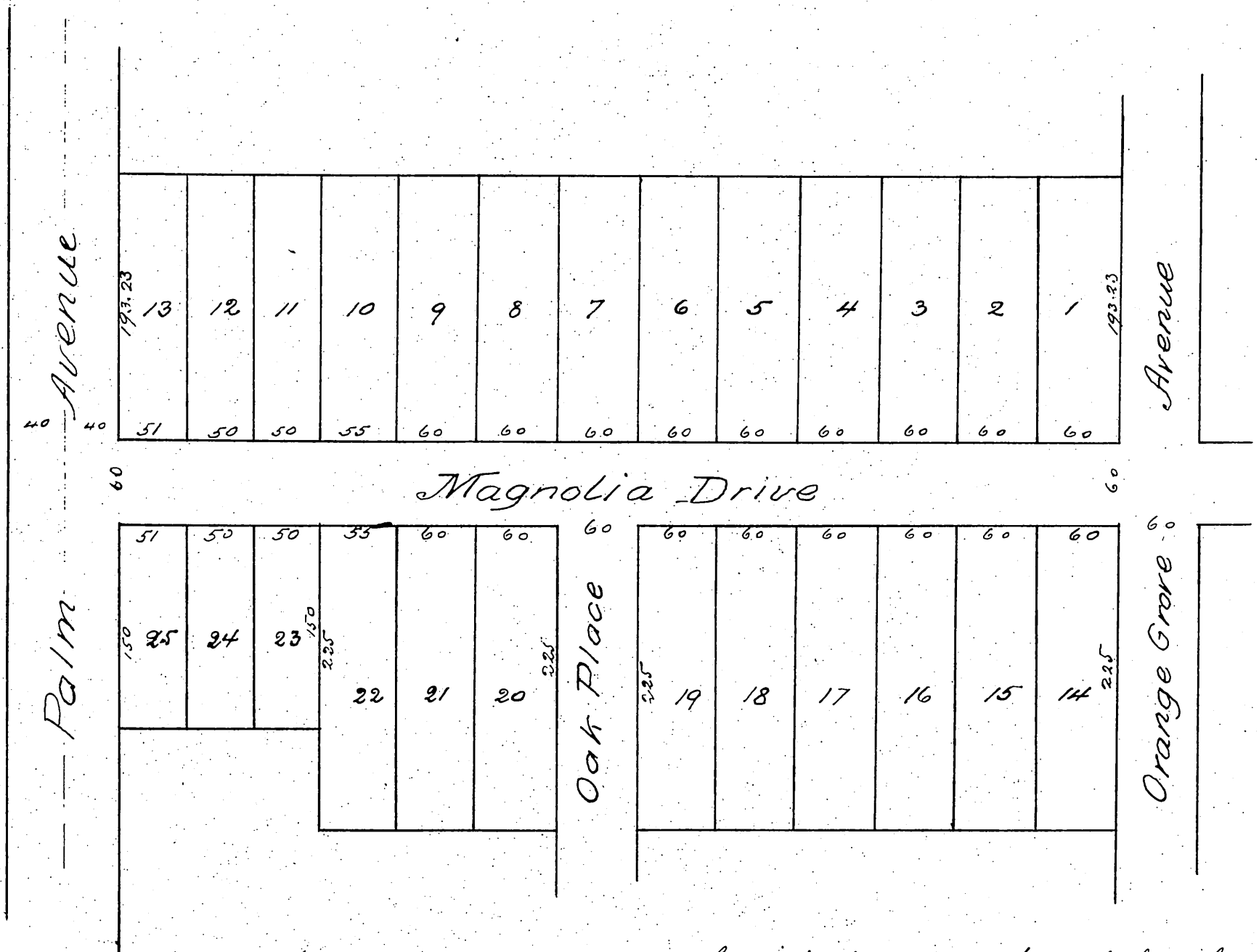


Replot Map
of a portion
of the
Lockwood Tract
OF
South Pasadena

(Reduced to Scale of 100 ft = 1 in)



a full, true and correct copy of the original (reduced to scale of 100 ft to 1 inch) recorded 24th May 1887 at 12:46 PM at request of E. H. Lockwood

Frank A. Gibson County Recorder
by George Bugbee Deputy