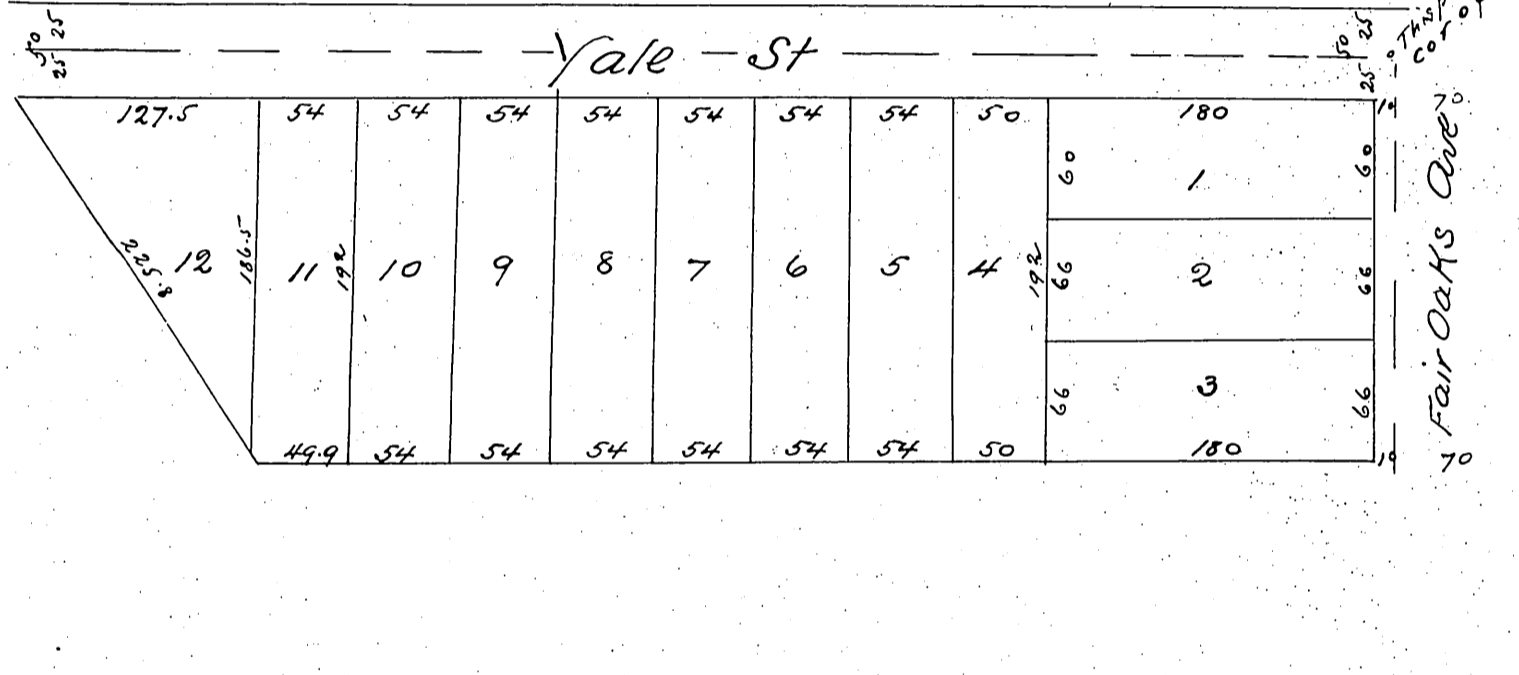


Map
OF
THE
I. A. Willis Subdivision
in Block T Painter and Ball Tract
Pasadena Cal.

Surveyed by J. M. Willard C.E. Sept 1886

Scale 60ft to 1 inch
(reduced to 100' to inch)



A full true and correct copy of the original (reduced to scale of 100 feet to one inch) recorded May 25th 1887 at 12:38 PM at request of I. A. Willis

Frank A. Gibson County Recorder
By George Bugbee Deputy

Appendix to Map Recorded in Book 17 Pg 42 Miss Records Los Angeles County California

I, I. A. Willis declare that I am the party who formerly owned and made the Subdivision of the premises mentioned in said plat wherein there is a reference saying that a point in the center of Yale Street North of the North East corner of Lot one (1) is 465 feet South of the North East corner of Block T (San Pascual Tract) whereas said point is 440 feet South of said North East corner of Block T and this Appendix is made to correct the error as appears on said Plat

In Witness whereof I have hereunto set my hand and Seal this seventh day of August 1888

I. A. Willis Seal