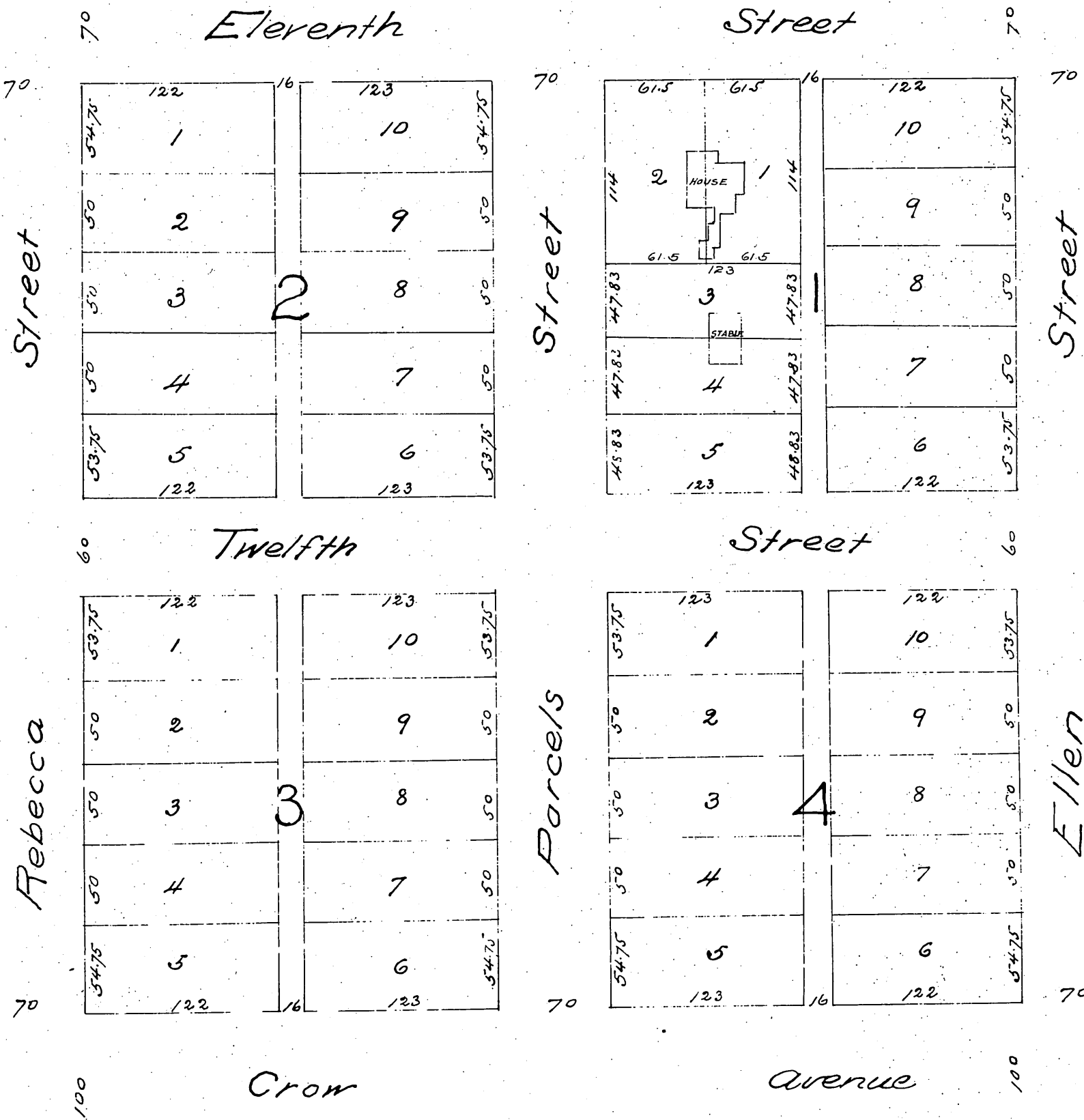


Map  
of  
Edward Evey's Subdivision  
of  
Block 166 Pomona Cal  
Scale 40ft to 1 in  
Jas T. Taylor C.E.



A full true and correct copy of the original (reduced to scale of 80 feet to one inch) recorded May 26<sup>th</sup> 1887 at 9<sup>42</sup> am at request of Jas T. Taylor  
 Frank A. Gibson County Recorder  
 By George Bugbee Deputy.