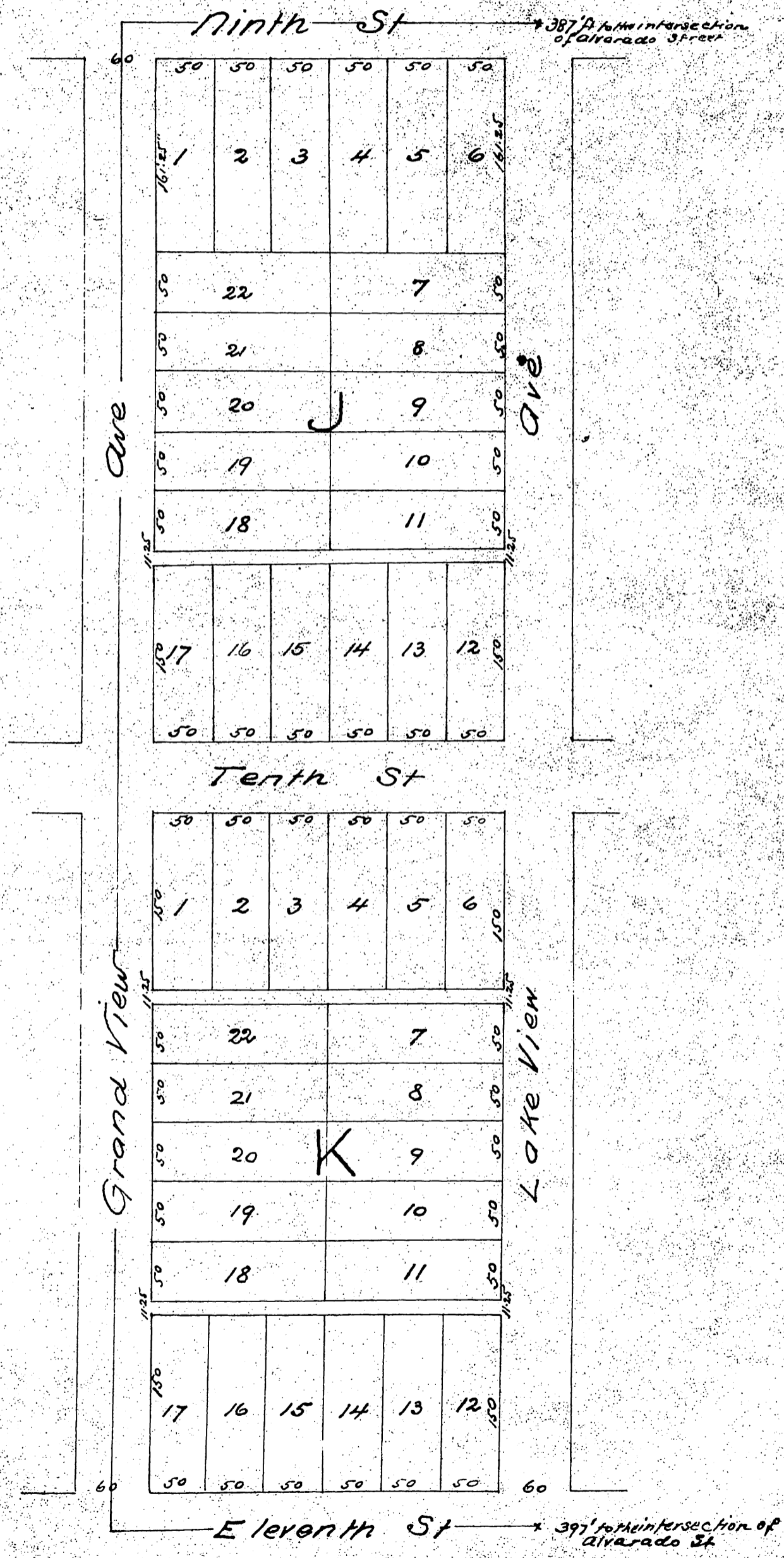


4748

MAP of Bonnie Brae Tract

Surveyed under instructions from S.A. Randall Esq^r
BY
F.D. Lanterman Surveyor Los N. Main St. & A.



A full true and correct copy of the original (reduced to scale of 100 ft. to one inch) recorded May 26th 1887 at request of S.A. Randall
 Frank A. Gibson County Recorder
 By George Bugha Deputy