

A & P's Subdivision

OF

Lot B. Block 16, 2nd Addition to Monrovia Tract

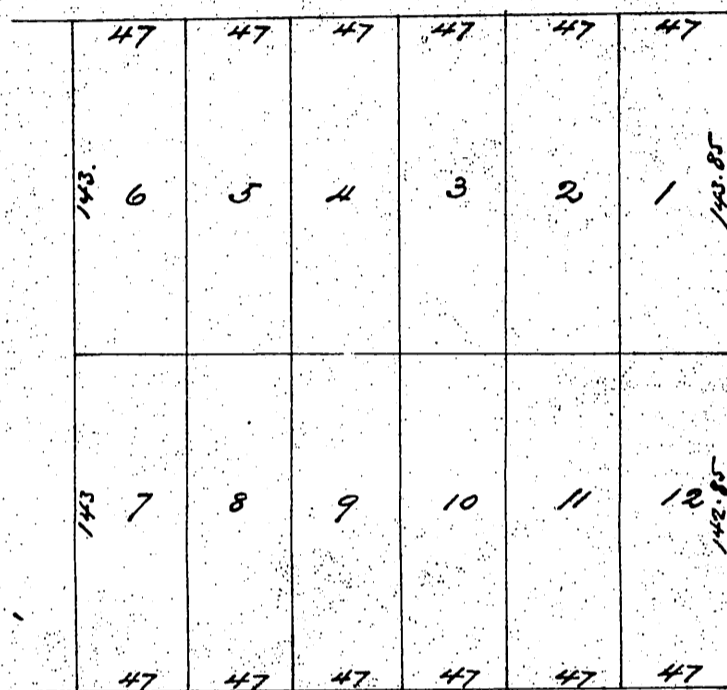
Sec 25 T¹ N. Range 11 W

Los Angeles Co Cal.

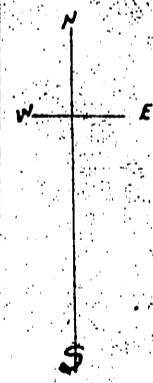
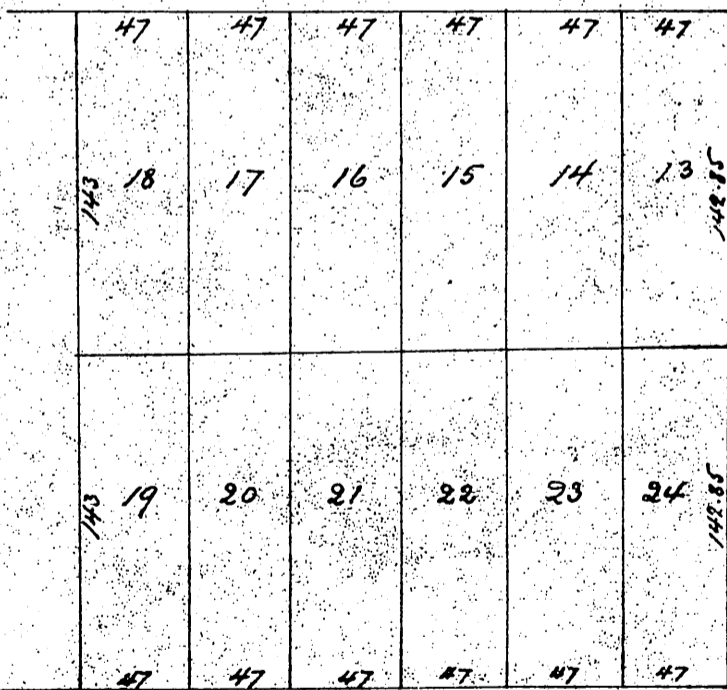
Surveyed by J. S. McDonald & Co. Monrovia

Scale 1 inch = 80 ft.

Falling Leaf Ave



60 Cypress Ave



Shown in map of Subdivision of the Rancho Laguna de San Juan recorded in Book 6 page 80 Miscellaneous Records Los Angeles Co. Cal.

A full true and correct copy of the original recorded
 May 27th 1887 at 10th A.M. at request of Albert Pugh
 Frank A. Gibson County Recorder
 By George Bagbee Deputy