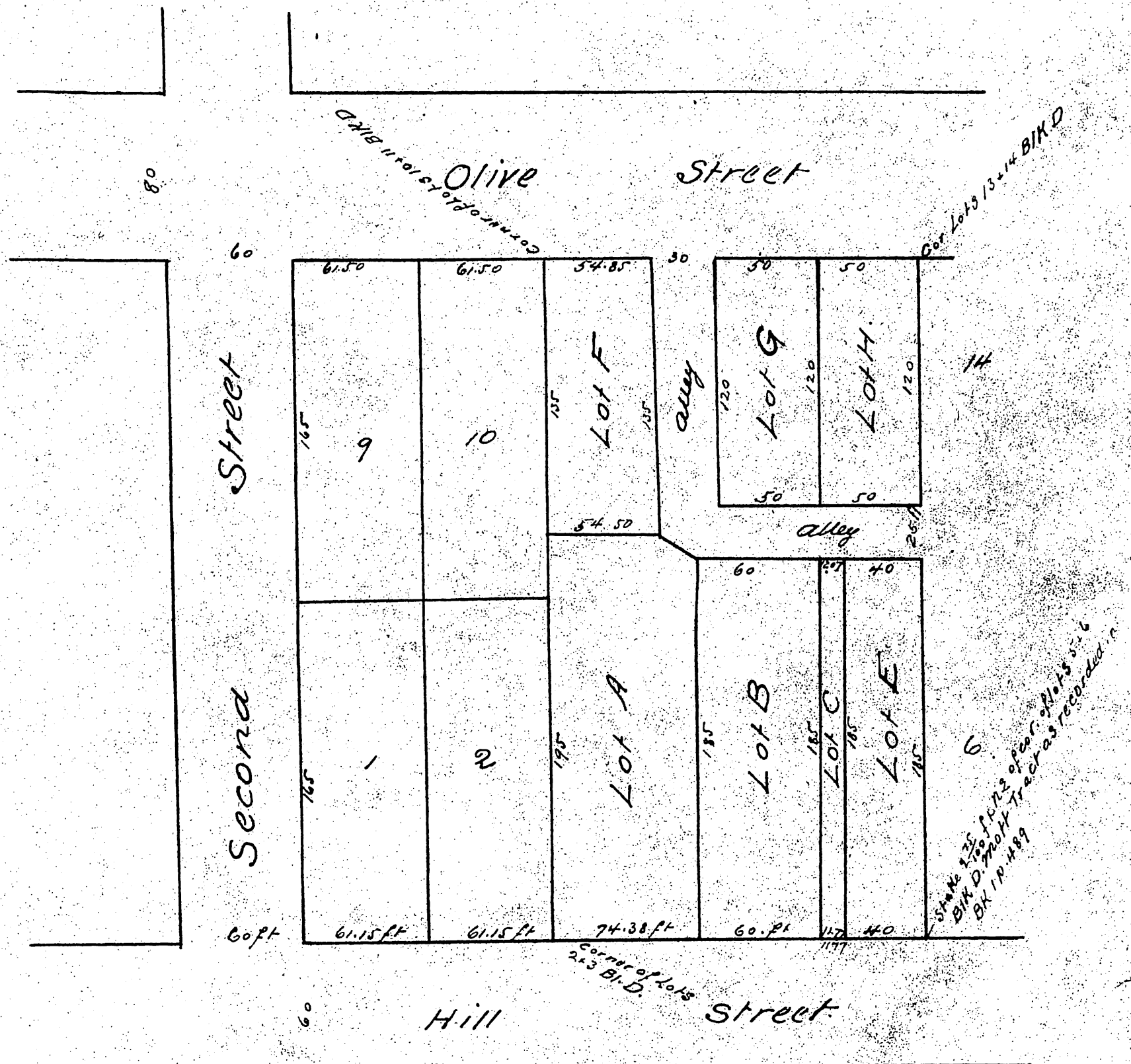


map  
of  
Stephens' Subdivision  
of a portion of  
Block D. Mott Tract

Being Lots 3, 4, 5, 11, 12, 13 and fractional parts of Lot 6 and 14  
Surveyed Apr 1887 by E.T. Wright.  
Scale 60 ft to an in.



A full true and correct copy of original recorded  
May 28<sup>th</sup> 1887 at 2<sup>30</sup> P.M. at request of A.M. Stephens  
Frank A. Gibson County Recorder  
By Geo. Bugbee Deputy