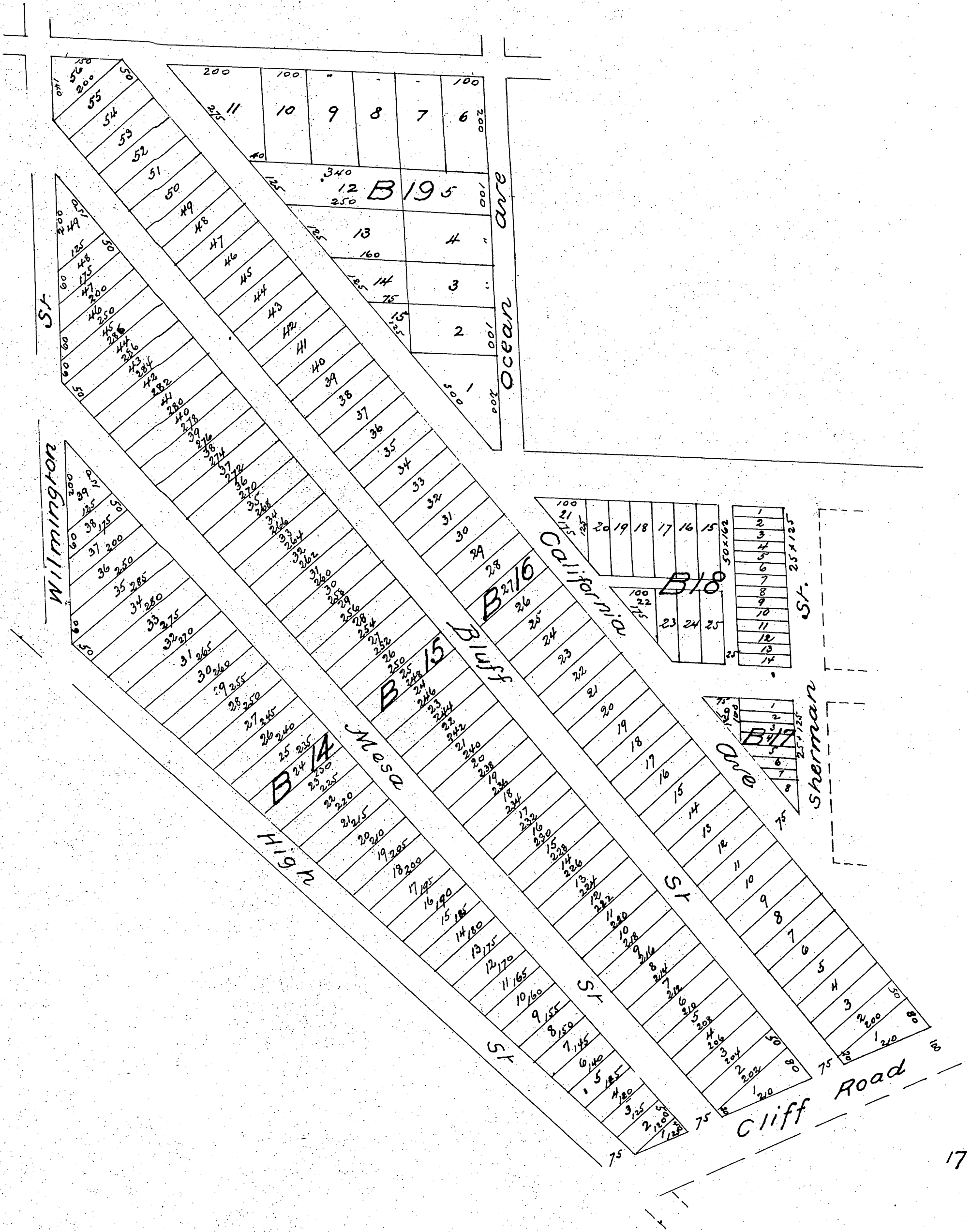


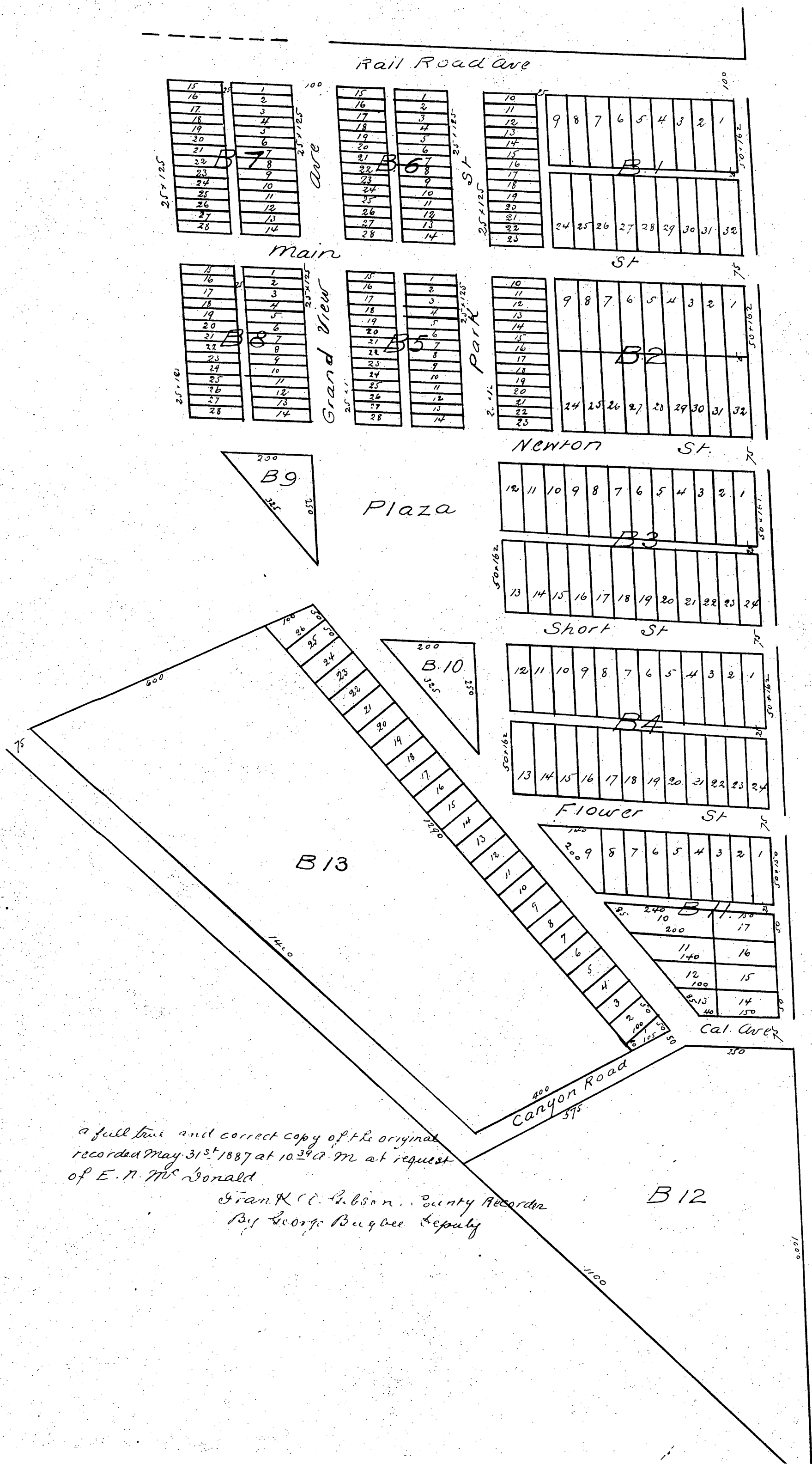


# WALTERIA

A Subdivision of  
Lots 10, 11, 12, 13, 34, 35 & 36 in Meadow Park Tract  
Palos Verdes Rancho

Scale 1 in 200 ft





a full true and correct copy of the original  
 recorded May 31<sup>st</sup> 1887 at 10<sup>39</sup> A.M. at request  
 of E. N. Mc Donald

Frank C. Gibson, County Recorder  
 By George Bugbee Deputy

B 12