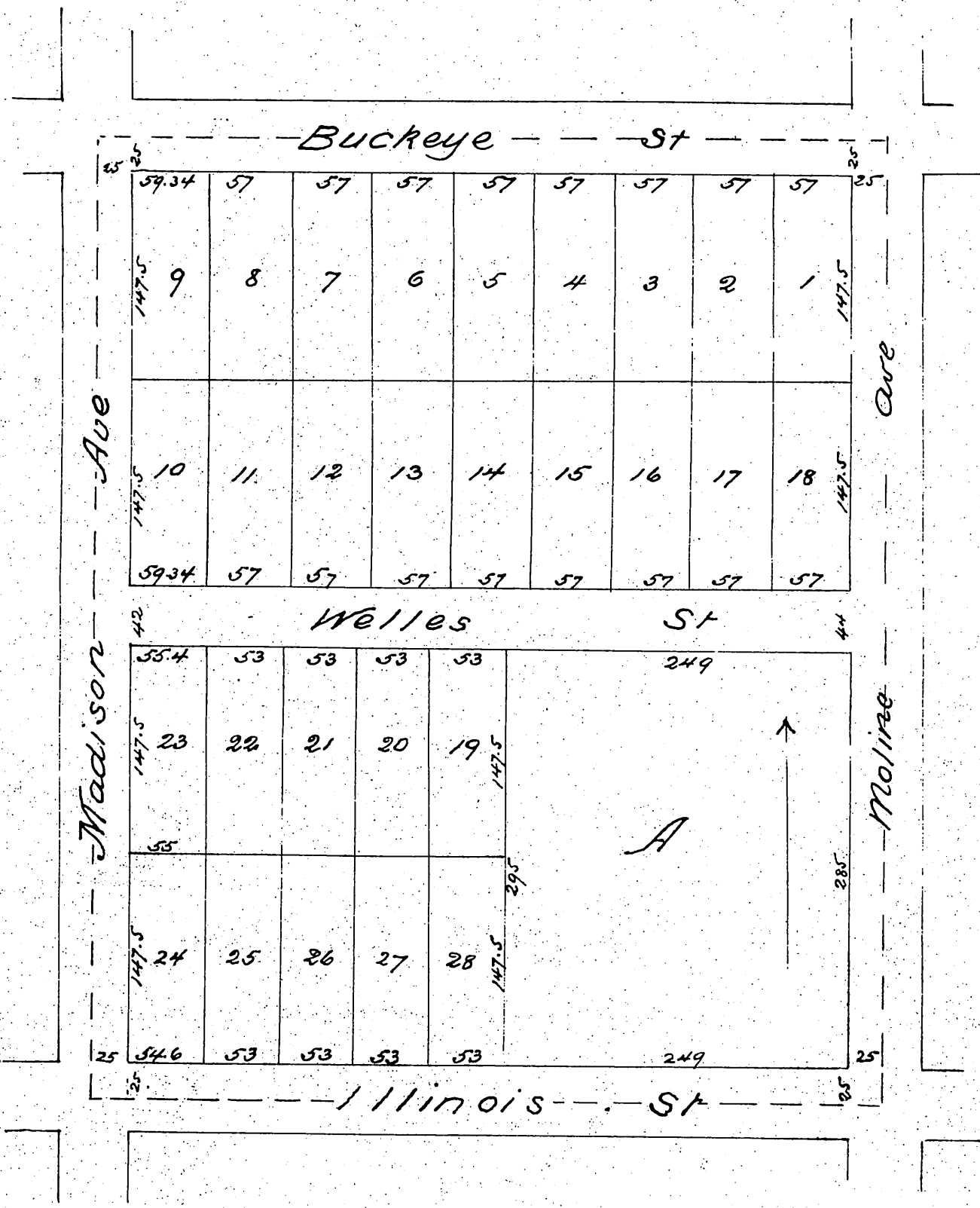


# MAP OF Welles' and Nichols Subdivision Pasadena Cal

Being the 884 acres on the N.W. corner of Moline Ave  
and Illinois St and bounded respectively on the N, S, E & W  
by the centre lines of Buckeye & Illinois Streets Moline & Madison Aves.  
Riggins Bros Surveyors.



A full true and correct copy of the original  
(reduced to scale of 100 ft to 1 inch) recorded May  
31st 1887 at 12<sup>30</sup> m at request of T. Nichols  
Frank A. Gibson County Recorder  
By George Bughes Deputy