

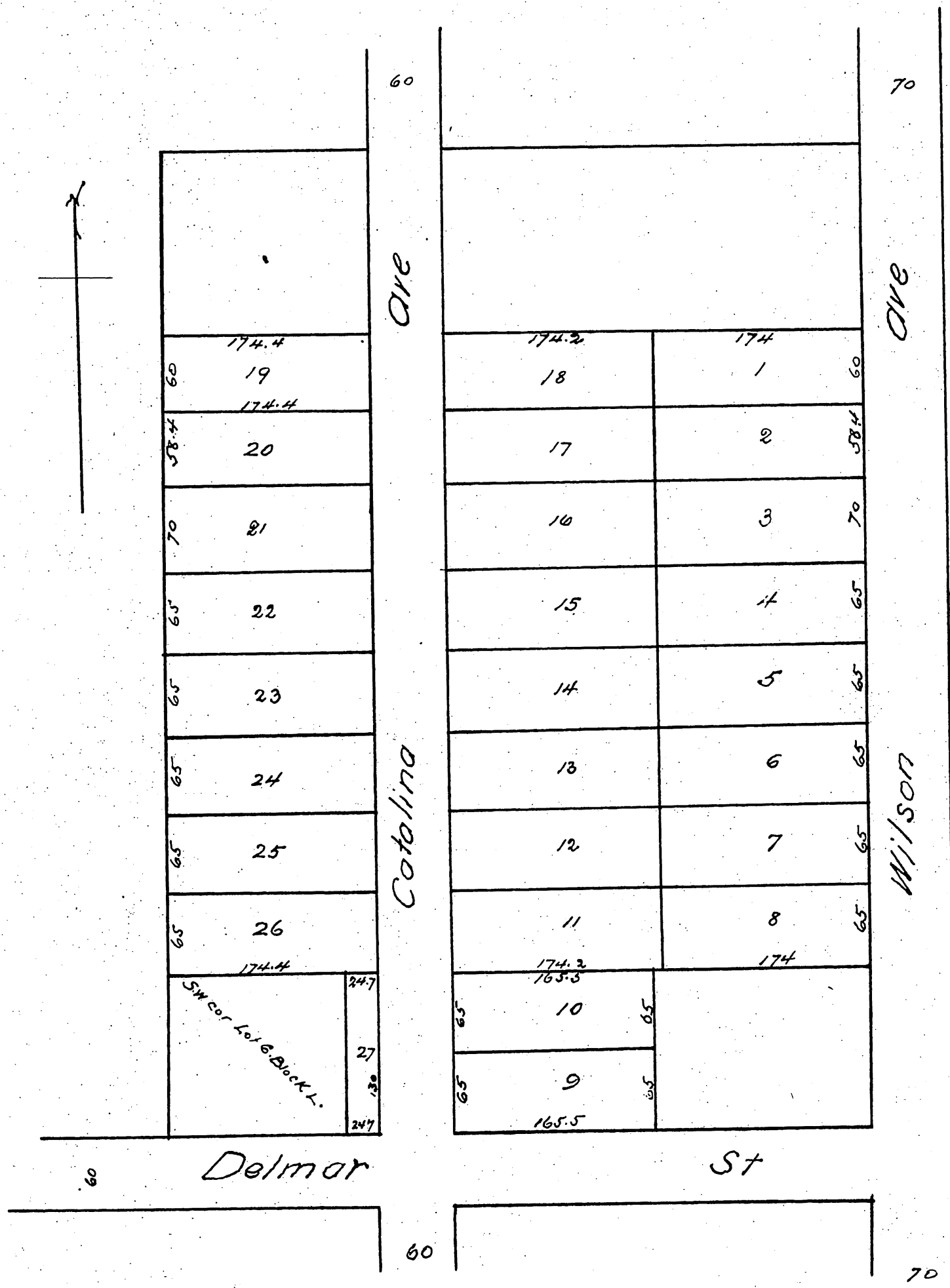
Map
OF

Abbott Glass & Keese
Subdivision

of the
South 7 acres of Lot 6 Block 2 San Pasqual Tract
of the Lake Vineyard Land & Water Association Lands
and Lots 9, 10 and the East half of Lot 8 of the Debiez Tract
as recorded in Book 9 page 88 Mistn Records
Pasadena Cal

Scale 80 ft to the inch

Surveyed April 1887 by Baldwin & Jessup Surv's



A full true and correct copy of the original (reduced to scale of 100 feet
to one inch) recorded May 3rd 1887 at 3 p.m. at request of C.W. Abbott
Frank A. Gibson County Recorder
By George R. R. Deputy