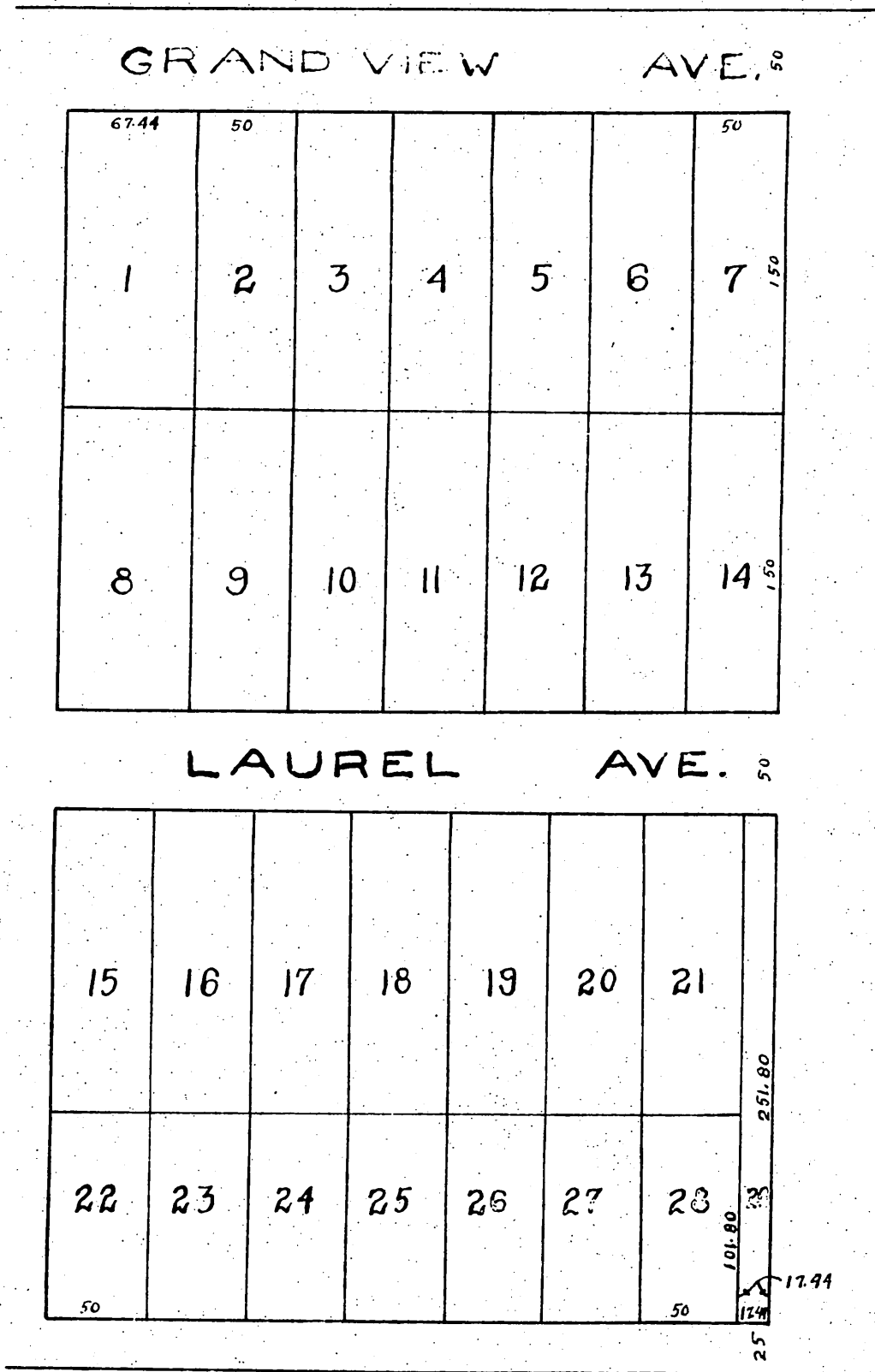


NORRIS TRACT

Being a subdivision of a part of Lot 14, beginning at a point on the South side of Grand View Ave. 285.36 ft. from the center of Baldwin Ave. West Sierra Madre Cal. March 14, 1887 J. A. Osgood surveyor

Scale 50 ft. to 1 inch
Reduced to 80 ft.



Recorded May 31, 1887 at 2:23 P. M.
at request of S. R. Norris