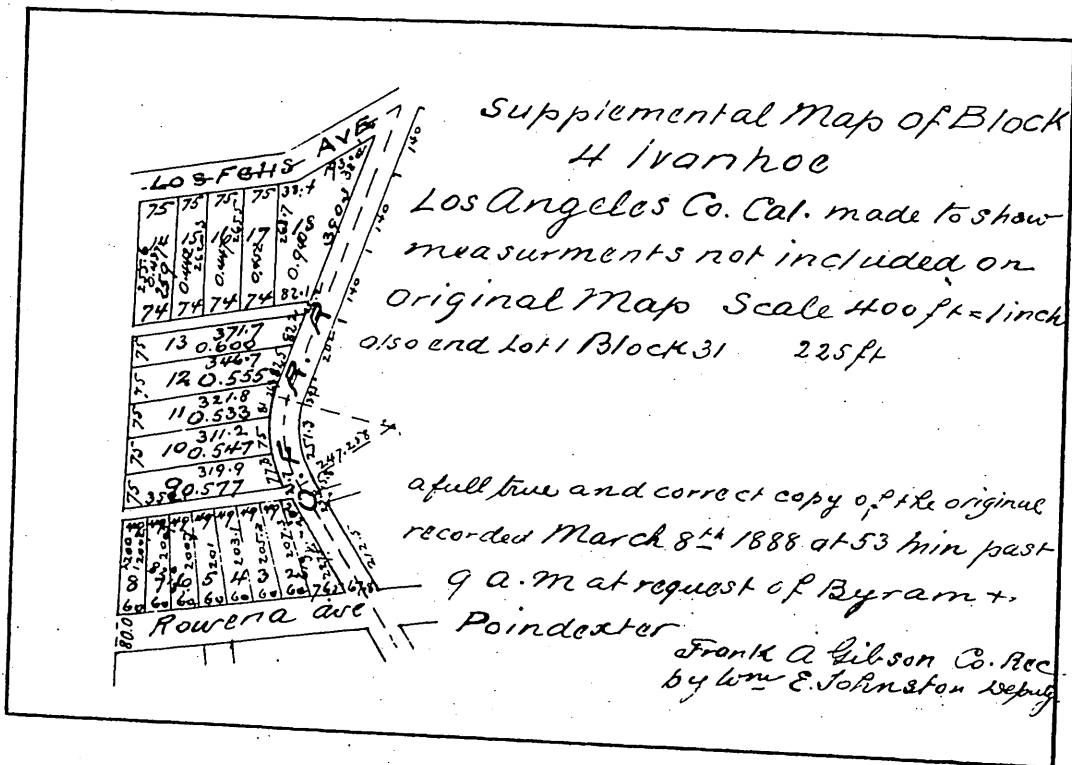
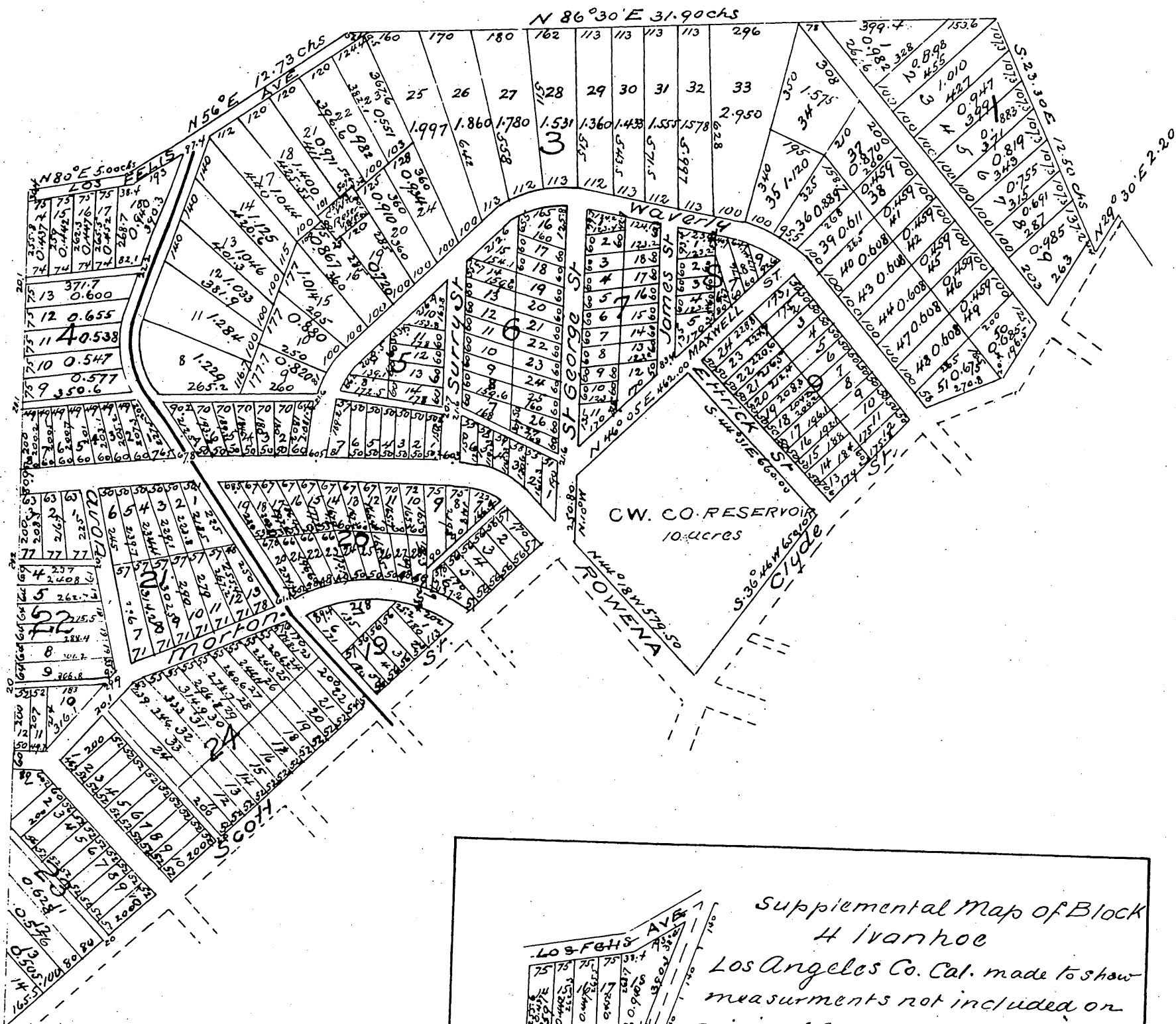


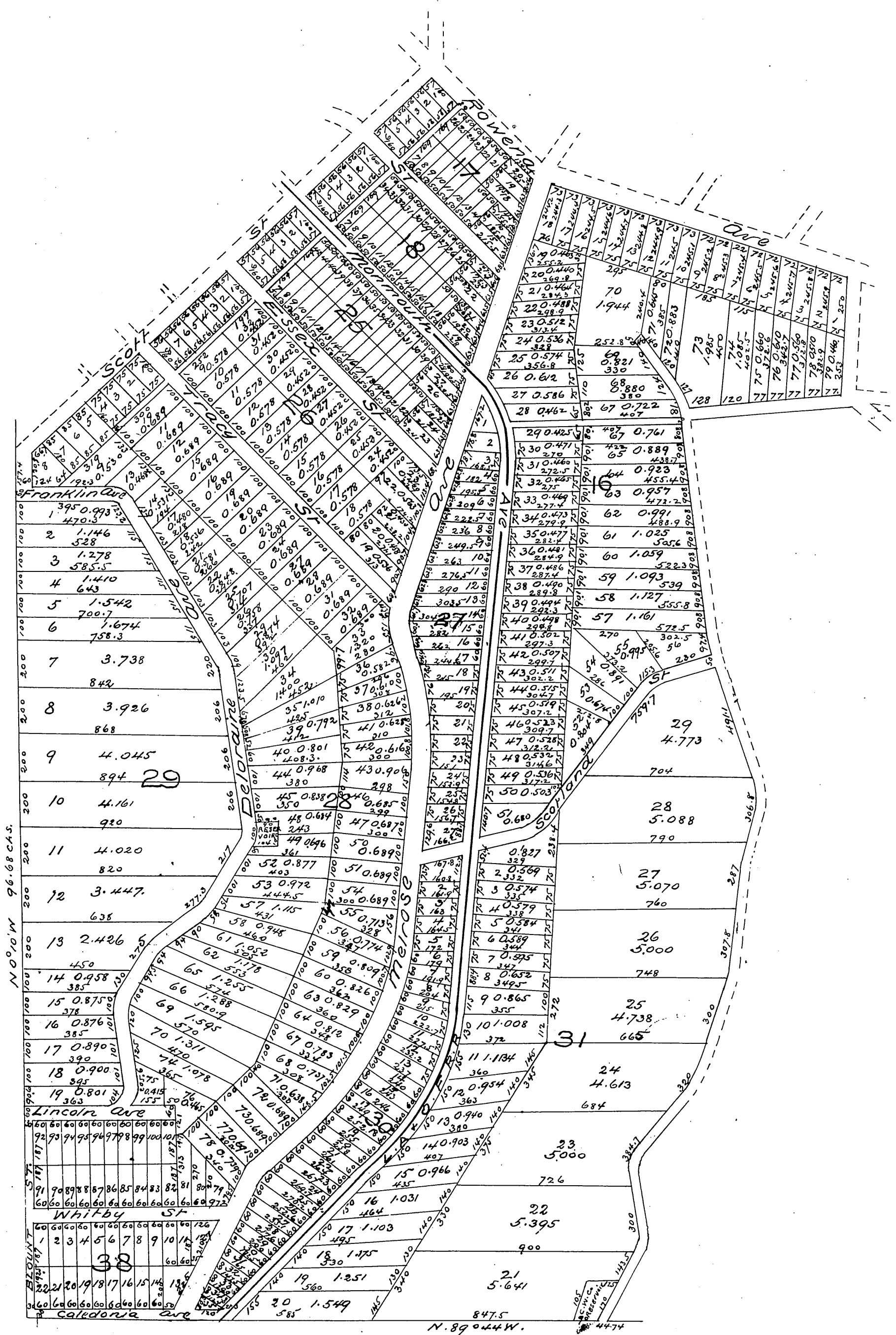
# MAP OF IVANHOE

a subdivision of the East portion of  
the Lick Tract Los Felis Ro

Los Angeles Co Cal.  
surveyed Jan 1887 by W.H. Tinker C. E.  
Scale 150ft = 1inch.





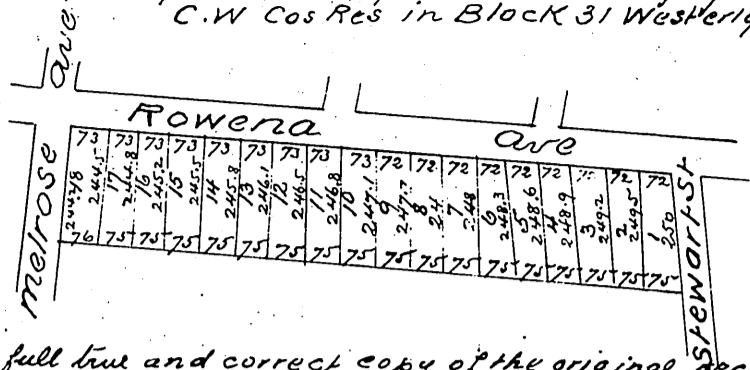


Note. the stone post established N. W corner of Angeles City is N. 89° 44' W  
 27.16 chs from the S. W corner of the Ivanhoe Tract and the South  
 Boundary of Ivanhoe is the North City line

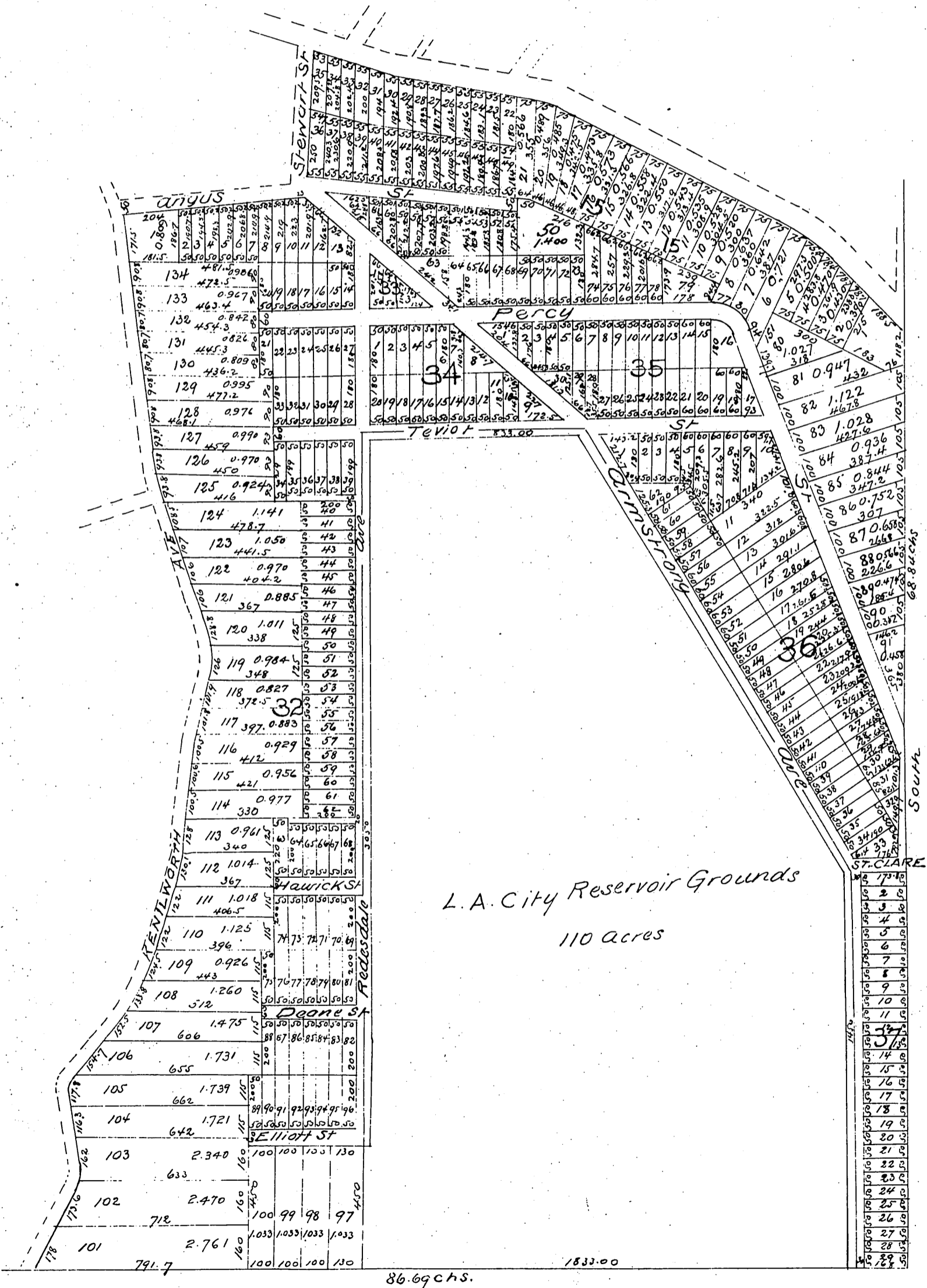
MR-17-68

Supplemental Map of Lots 1 to 18 inclusive of Block 16 Inverhoe, Los Angeles Co. Cal

made to correct erroneous measurements recorded from Original Map scale 400 feet = 1 in also Between lots 18 and 21 Block 3 386 ft in lot 18 0.992 acres, in lot 21 0.991 acres on westerly side Lot 91 Block 15 375 feet and C.W Cos Res in Block 31 Westerly side 157 ft



a full, true and correct copy of the original recorded March 8<sup>th</sup> 1888 at 9:55 A.M. at request of Byram & Poindexter Frank A. Gibson Co. Rec by Wm E. Johnston Deputy



A full, true and correct copy of the original (reduced to the scale of 400 feet to one inch) recorded June 2<sup>nd</sup> 1887 at 26 min past 11 a.m. at request of Byram and Poindexter Frank A. Gibson County Recorder by George Bugbee Deputy