



# Corrected MAP OF THE

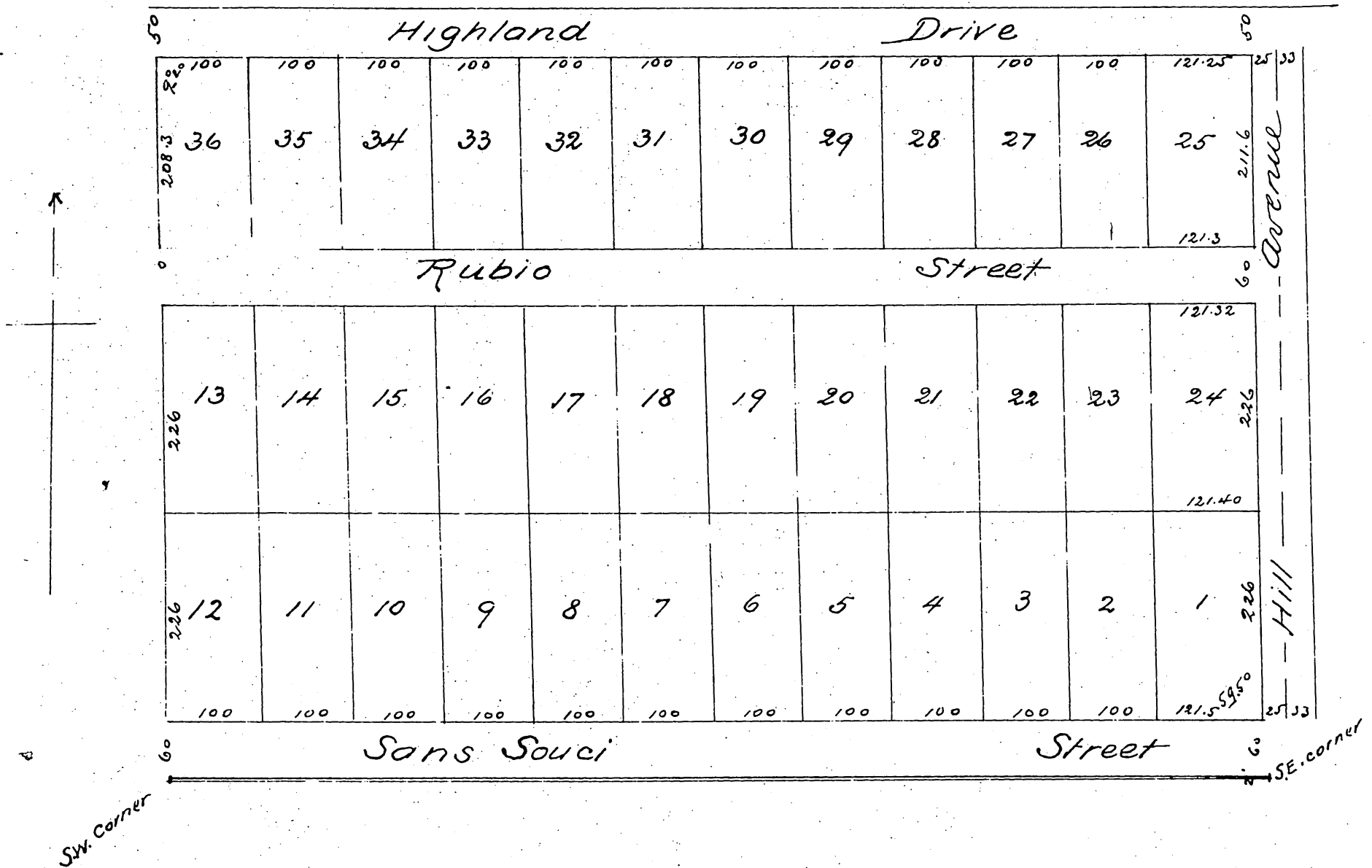
## Ocean View Tract

a Subdivision of the South 22.47 acres of land  
conveyed by deed from Alex B. Progan to M. E.  
Hodgkins as recorded in Book 105 of Deeds.  
page 589 of Los Angeles County Records

Pasadena

Surveyed by J. M. Willard C.E. 1887

Scale 100 feet = 1 inch



A full true and correct copy of the original (reduced to scale of 150 feet  
to one inch) recorded Sept 24 1887 at 11:00 am at request of M. E. Wood  
Frank A. Gibson Co Recorder  
by George Bugbee Deputy