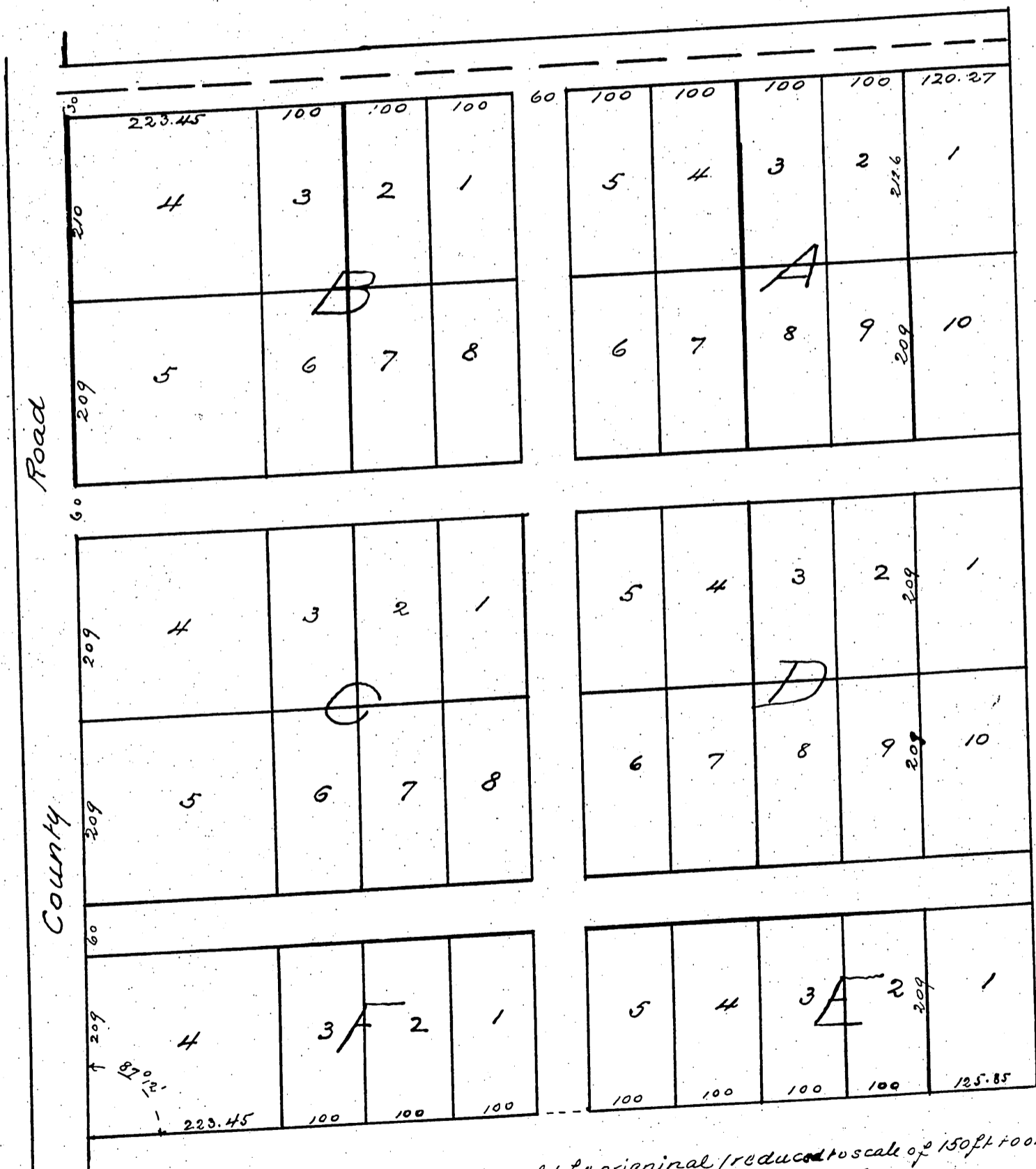


# MAP of O. J. Giffin's Subdivision of the LOPEZ TRACT

Rancho San Jose Los Angeles Co Cal  
Jas T. Taylor & Co Surveyors  
September 1887  
Scale 100 ft = 1 inch



a full, true and correct copy of the original (reduced to scale of 150 ft to one inch)  
recorded Sept 24. at 11:40 A.M. at request of Los Angeles Land Bureau  
Frank A. Gibson County Recorder  
by George Bugbee a deputy