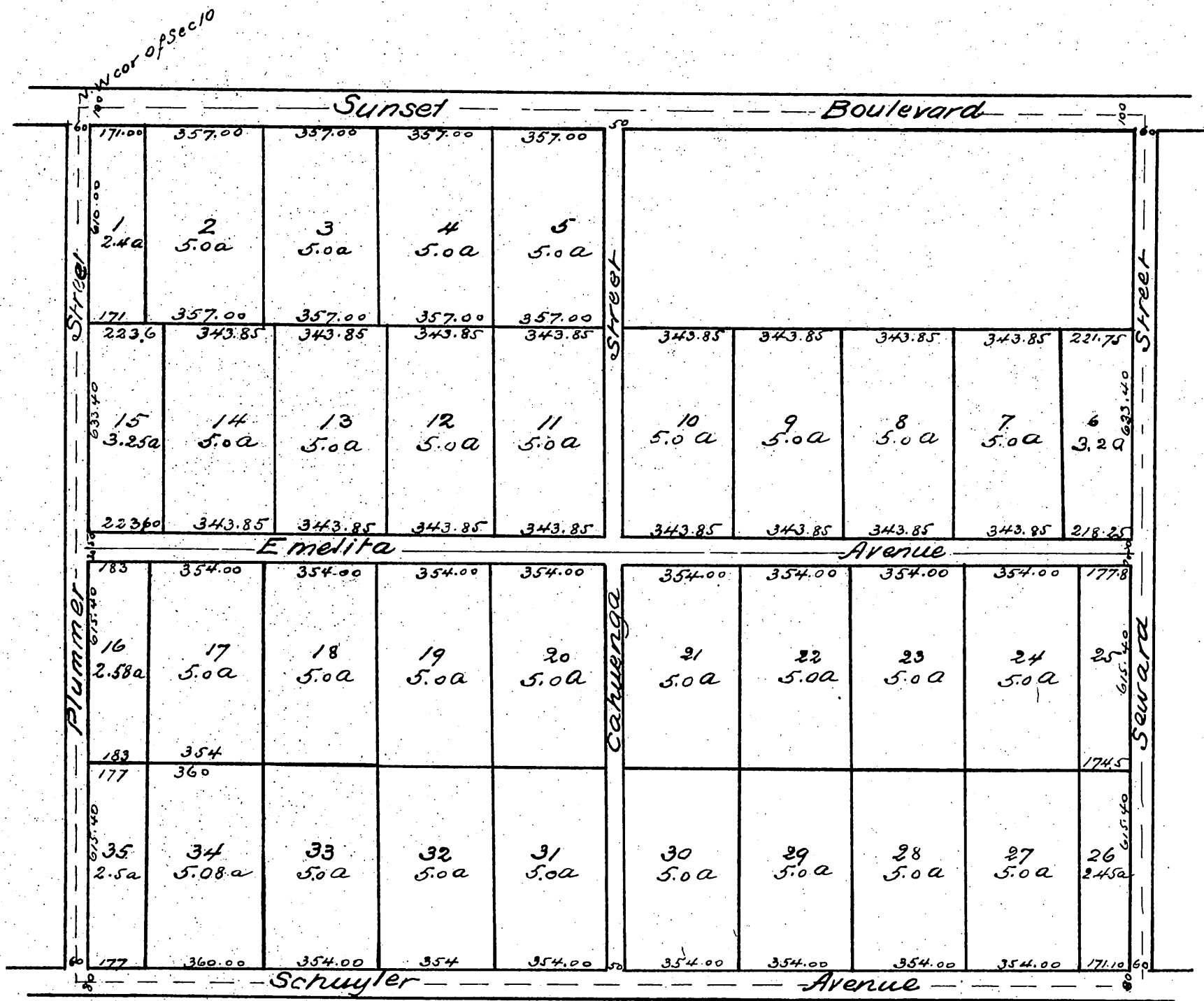


# MAP of TONNER & GARBUTTS SUBDIVISION

OF THE  
F. W. Little Tract  
Situated in T. 1. S. R. 14. W. S. B. M.  
as surveyed in April 1887  
By  
E. G. Jones C. E.  
Scale 300 ft to 1 inch



A full true and correct copy of the original (reduced to scale of 400 feet to 1 inch) recorded June 2nd 1887 at 2<sup>16</sup> P. M. at request of Tonner Garbutt and Little

Frank A. Gibson County Recorder  
By George Bugbee Deputy