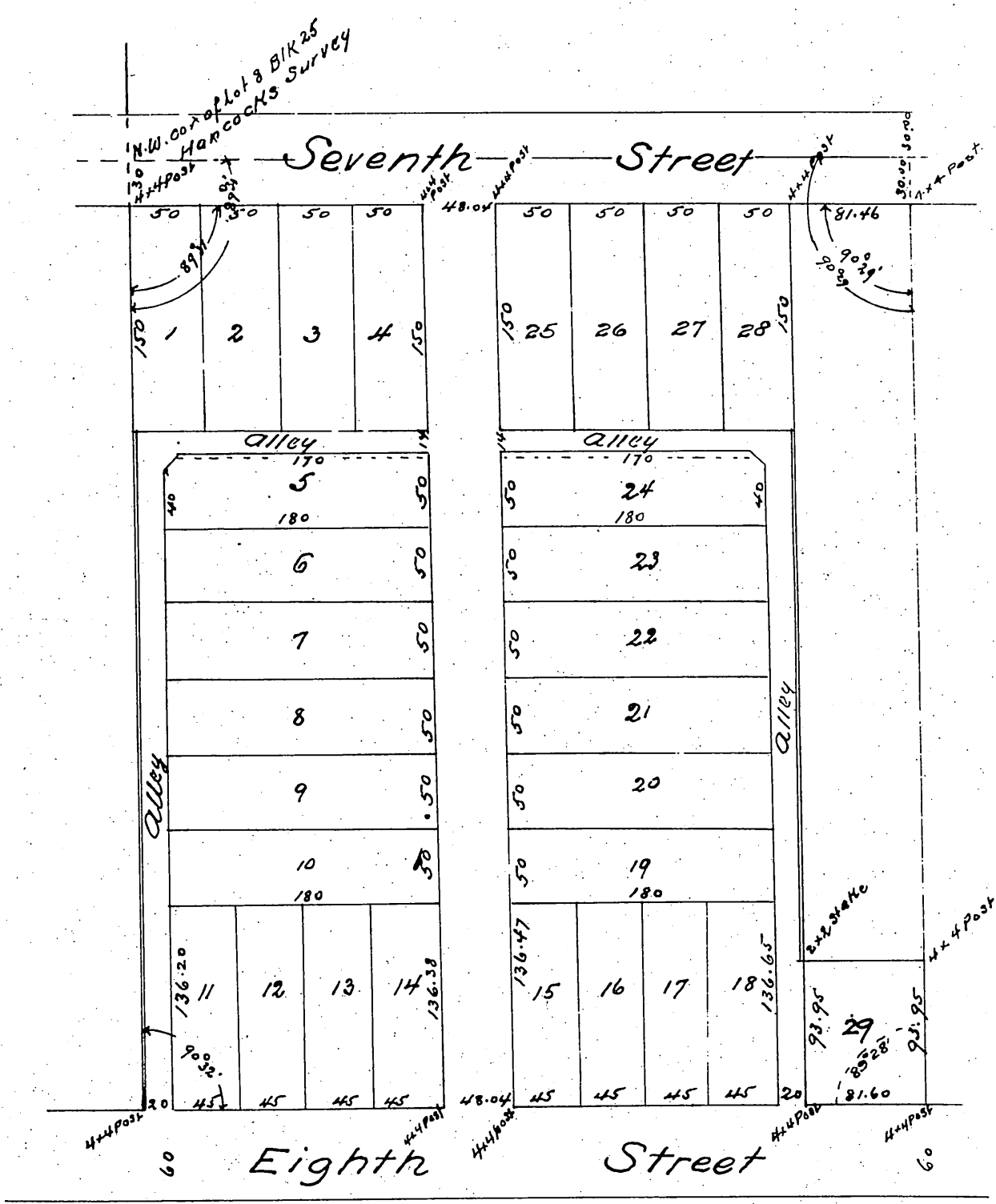


# Plat OF West Lake Terrace

Located in Lot 8 Block 25 Hancock's Survey in the City of Los Angeles  
Subdivided at the request of E. F. Spence in

May 1887 by  
George C. Knox  
Scale 100' to 1 in.



*Note*  
There is a strip of land 100 feet wide  
(as shown on map) between the alley  
West of Lot 11 and Lots 5 to 10 inclusive  
and Lot 7 Block 25 Hancock's Survey

*Note*  
There is a strip of land 1.00 foot wide  
(as shown on map) between the alley East  
of Lots 19 to 24 inclusive and the tract of land  
adjoining West Lake Terrace on the East

A full true and correct copy of the original recorded  
June 3<sup>rd</sup> 1887 at 2:20 P.M. at request of E. F. Spence  
Frank A. Gibson County Recorder  
By George Bugba Deputy