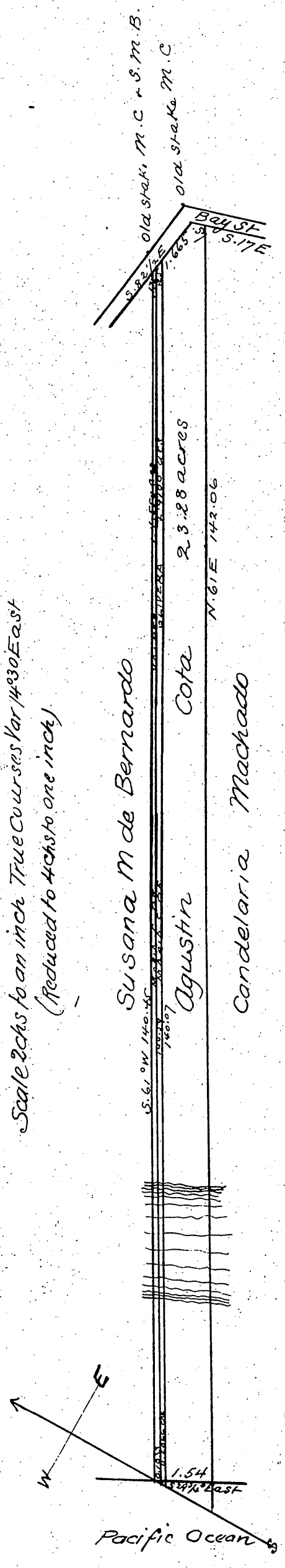


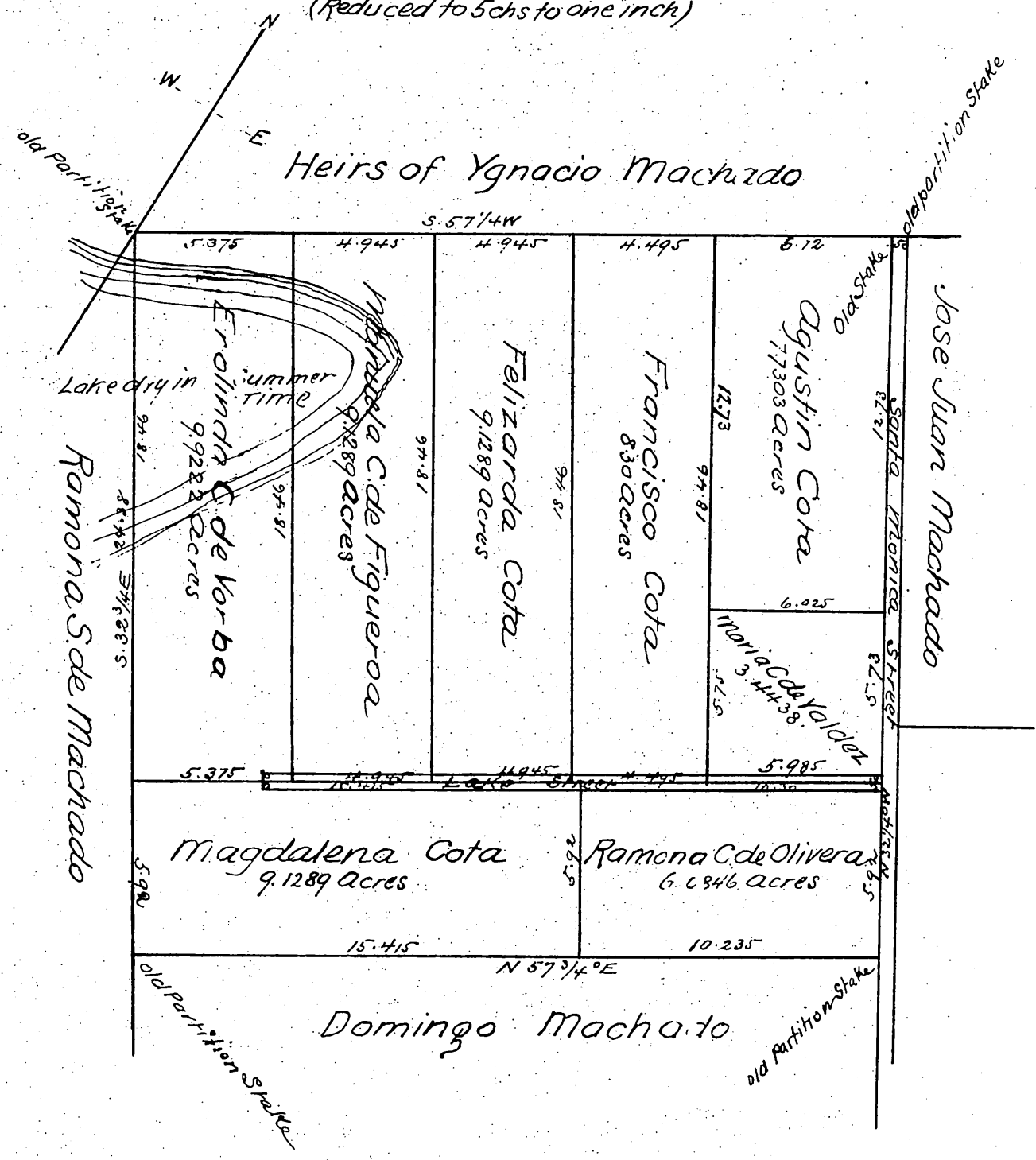
# Lot 5

Scale 2chs to an inch True Courses Var 1/2° East  
(Reduced to 4chs to one inch)



# Lot 4

Scale 3chs to an inch True Courses Var 1/2° East  
(Reduced to 5chs to one inch)



a full, true and correct copy of the original  
 recorded June 4 1887 at 8 min past 1 P.M.  
 at request of Agustin Cota  
 Frank A. Gibson County Recorder  
 By George Bugies Deputy