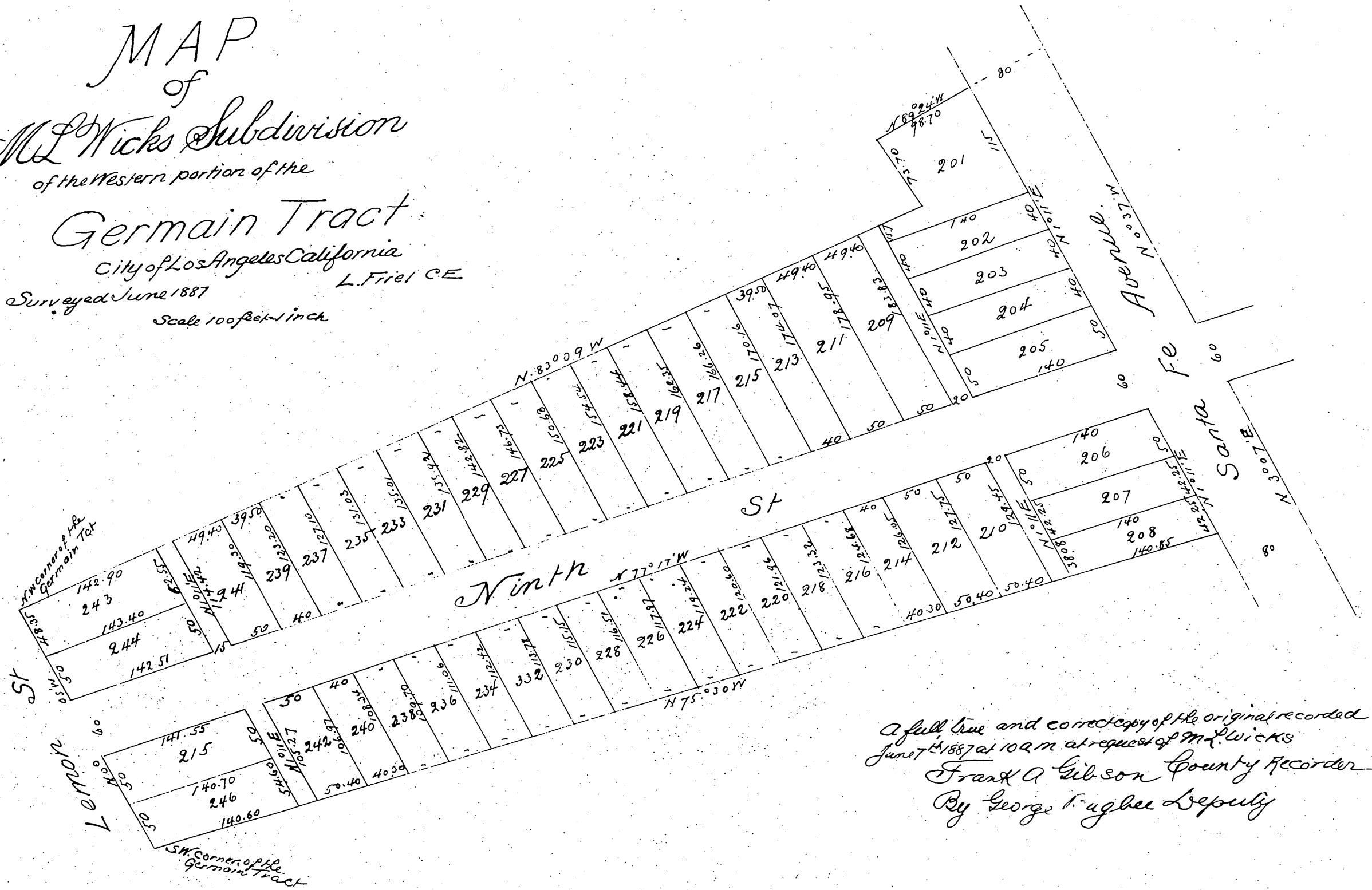


MAP
of
M L Wicks Subdivision
of the Western portion of the
Germain Tract
City of Los Angeles California
Surveyed June 1887
L. Friel C.E.
Scale 100 feet = 1 inch



A full true and correct copy of the original recorded
June 7 1887 at 10 AM at request of M L Wicks
Frank A Gibson County Recorder
By George Hughes Deputy

