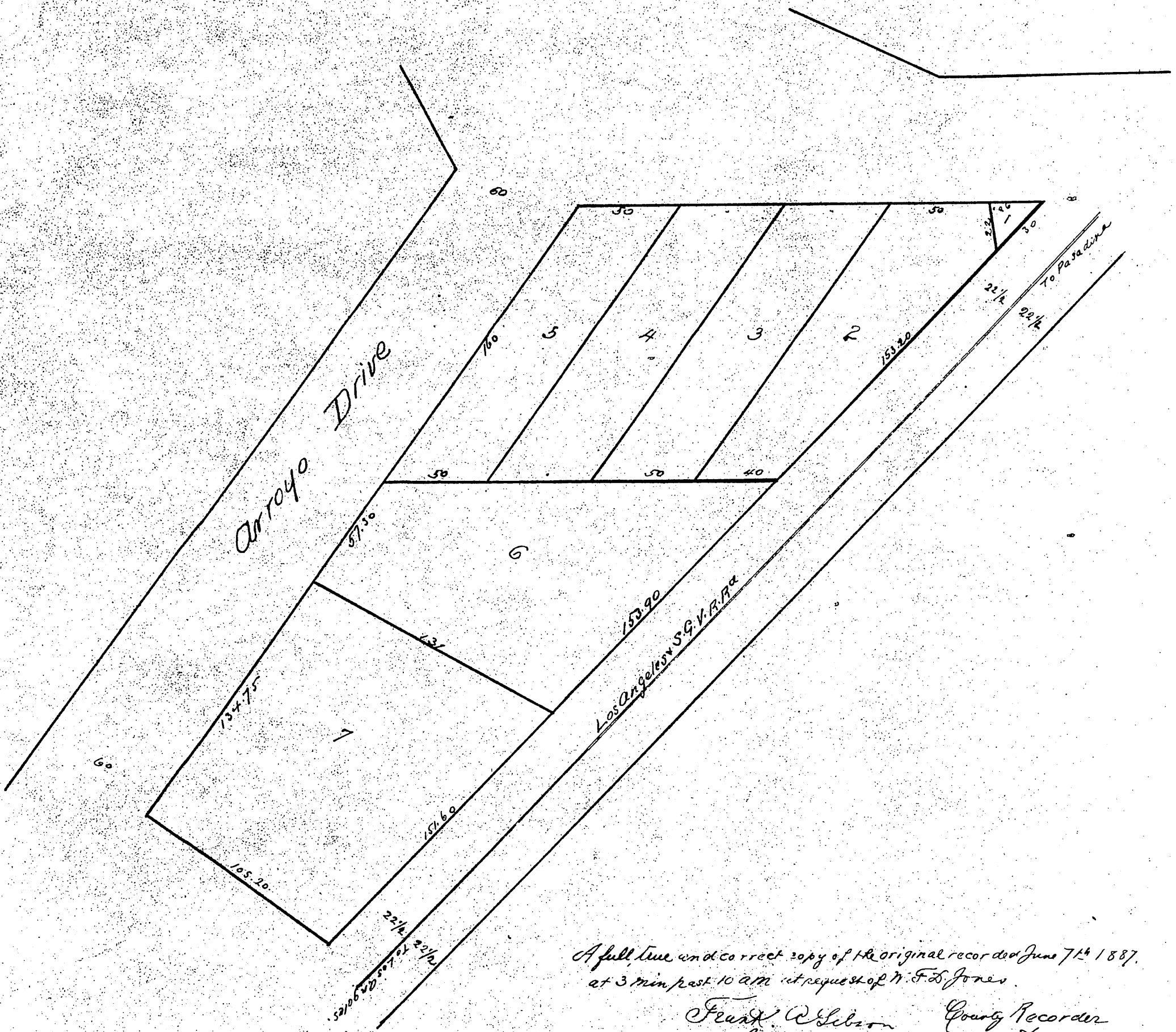


Map
 of
 Jones & Kings Subdivision
 of Lots 1 & 2 of the Lincoln Park Tract
 Los Angeles Co. Cal.
 Surveyed in May 1887 by M. S. Clure Bros
 Scale 1 in = 50 ft.



A full true and correct copy of the original recorded June 7th 1887
 at 3 min past 10 am at request of W. F. Jones.

Frank A. Wilson County Recorder
 By George Bugbee Deputy