



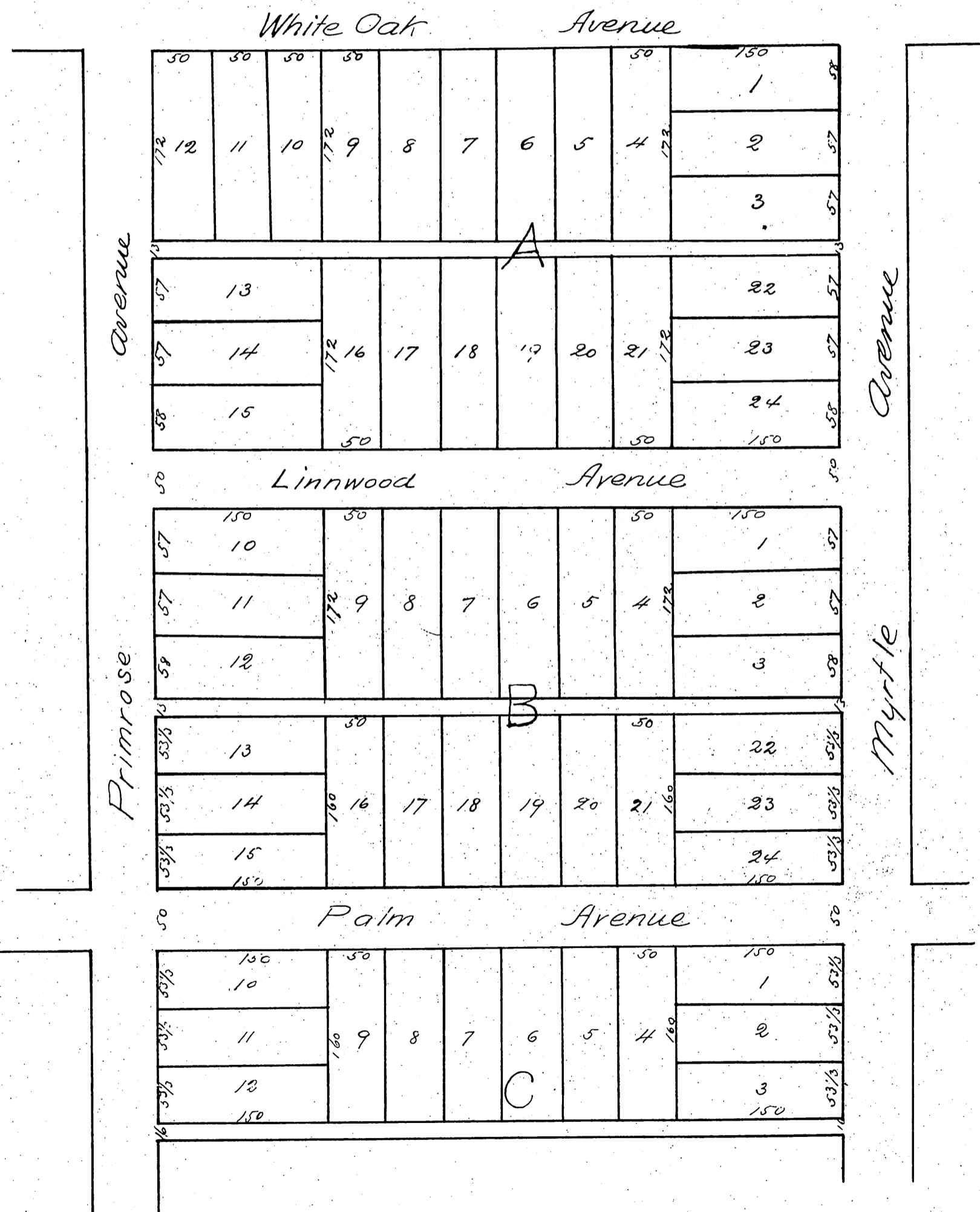
Map

OF

Spence & Falvey's Subdivision

of Lots A, B, & C Block 3 Town of Monrovia
Los Angeles County Cal.

NOTE
For Appendix to this map see Book 20
Page 16 of Miscellaneous Records



A full, true and correct copy of the original recorded June 7th 1887
at 2469 mat request of W. H. Monroe
Frank A. Gibson County Recorder
By George Hughes Deputy