

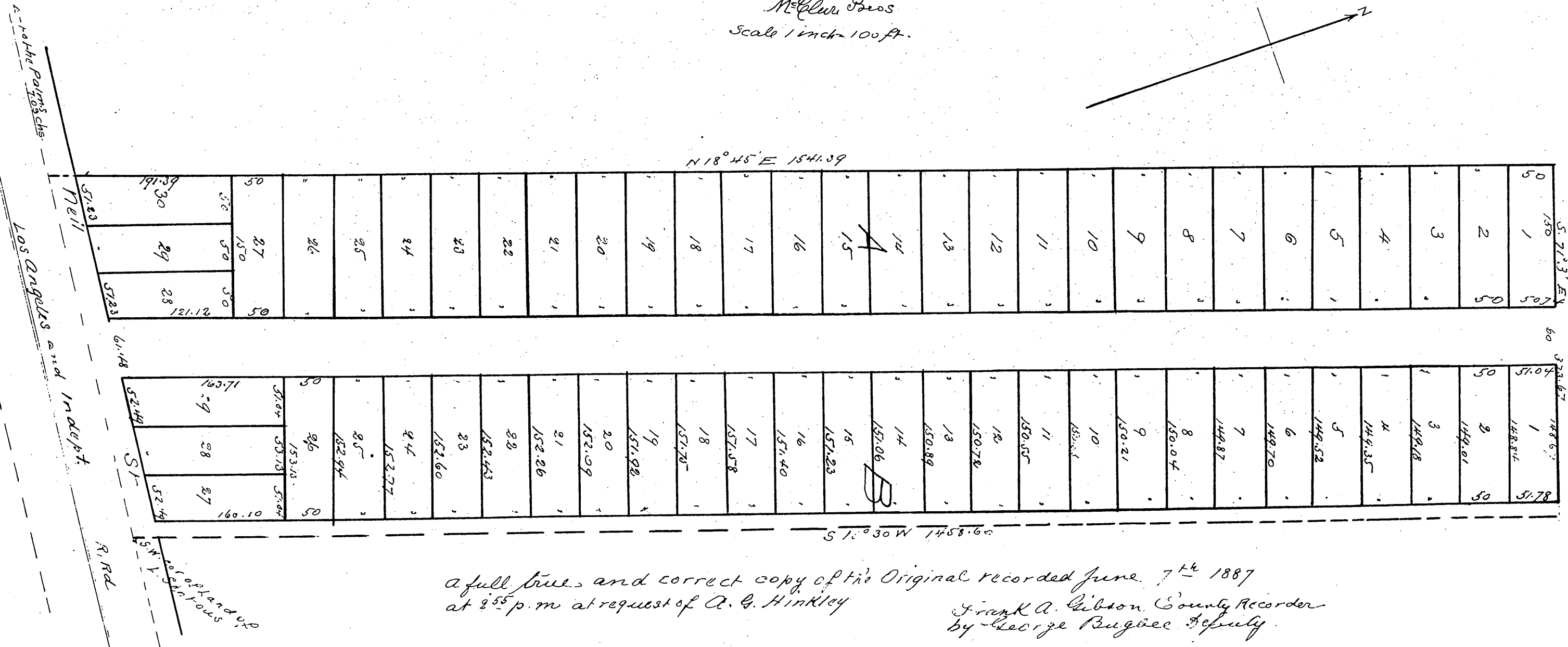
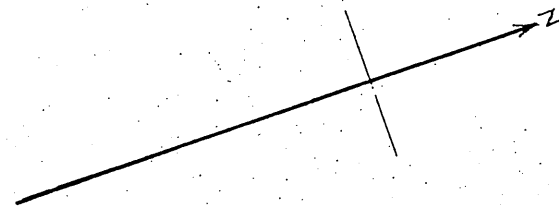
Map of the Palm City Tract Los Angeles Co Cal

Subdivided at request of A.G. Hinckley in June 87. being
amendatory to same map as recorded in Book 15.

page 68 of Mis Records

McClure Bros

Scale 1 inch = 100 ft.



a full true and correct copy of the Original recorded June 7th 1887
at 8⁵⁵ p.m. at request of A. G. Hinckley
Frank A. Gibson County Recorder
by George Bugbee Deputy