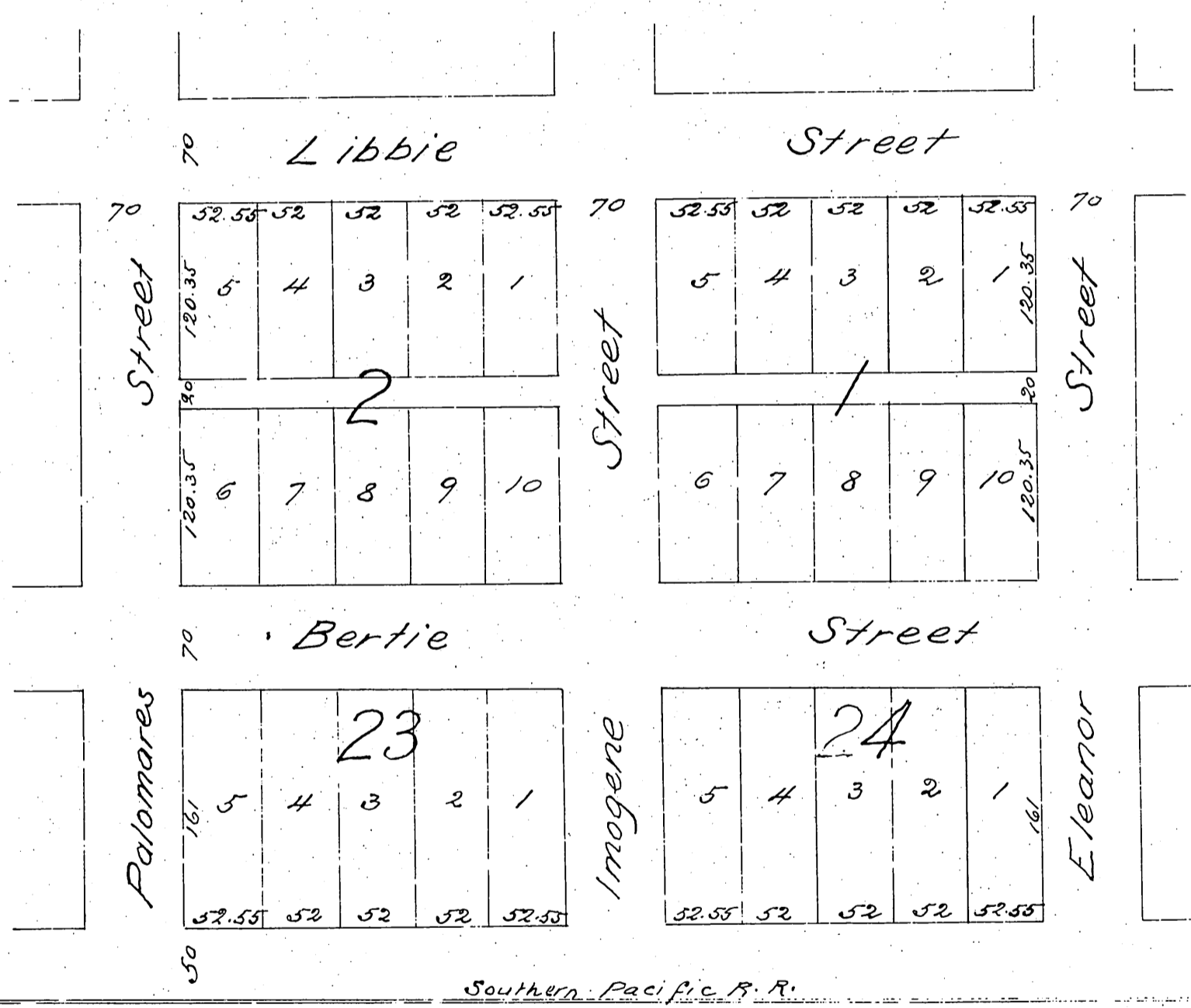


Map
 OF
 O F Giffin's Subdivision
 of Blocks 1, 2, 23 & 24
 Town of Pomona Cal
 Jas Taylor & Co Surveyors.
 August 1887
 Scale 50ft = 1 inch



A full true and correct copy of the original (reduced to scale of 100 ft to one inch) recorded Sept 24/1887 at 11:26 a.m. at request of Los Angeles Land Bureau
 Frank A. Libson County Recorder
 by George Bugbee Deputy